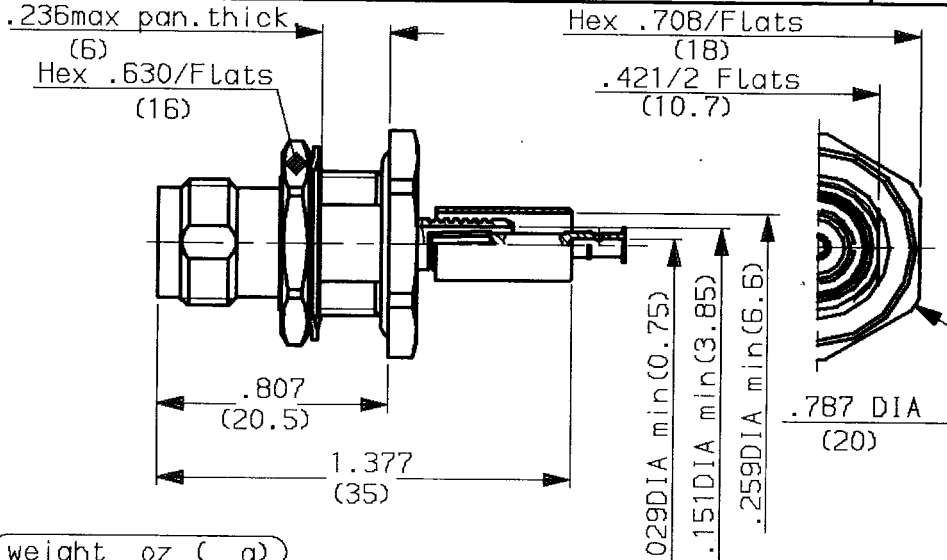
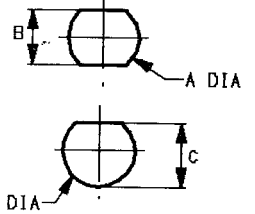


STRAIGHT BULKHEAD JACK CRIMP  
PANEL SEAL CABLE 6/75+93



88-1204-011

(MOUNTING HOLE)



	MM		INCH	
	mini	maxi	mini	maxi
A	12.7	12.8	.5	.503
B	10.8	10.9	.425	.429
C	12	12.1	.472	.475

weight oz ( g )

CABLES : RG59 KX6

CHARACTERISTICS

NOMINAL IMPEDANCE	75 $\Omega$
FREQUENCY RANGE	0-1.5 GHz
TEMPERATURE RATING	-65/+165 °C
VSWR	AD Max
RF INSERTION LOSS	AD $\sqrt{F}$ dB Maxi
VOLTAGE RATING	500 Vrms Maxi
DIELECTRIC WITHSTANDING VOLTAGE	1500 Vrms mini
INSULATION RESISTANCE	5000 Ma mini
HERMETIC SEAL	NA cc/s - Atm.cm3/s
LEAKAGE (pressurized only)	NA psi - MPa

STANDARDISATION

CECC 22200/TNC  
CEI 169-17/TNC  
MIL STD348-313/TNC

CABLE RETENTION 29.92 Lb mini  
136 N

CENTER CONTACT RETENTION

Axial force - mating end 5.984 Lb mini  
27.2 N

Axial force - opposite end 5.984 Lb mini  
27.2 N

Torque (Min) NA Inch.oz  
- cm.N

RECOMMENDED TORQUES

Mating NA Inch.Lb  
- cm.N  
Panel nut 32.745 Inch.Lb  
370 cm.N  
Clamp nut NA Inch.Lb  
- cm.N

CONSTRUCTION

CONNECTOR PARTS

MATERIALS

FINISH

BODY	BRASS	NICKEL
OUTER CONTACT	BRASS	NICKEL
CENTER CONTACT	BERYLLIUM COPPER	GOLD
INSULATORS	PTFE	-
GASKET	SILICONE RUBBER	-
-	-	-
-	-	-
-	-	-
-	-	-
-	-	-

ISSUE	REVISION No	DESCRIPTION	BY	DATE
.	.	.	.	.
.	.	.	.	.
.	.	.	.	.
.	.	.	.	.

Initiated on 11-JAN-91

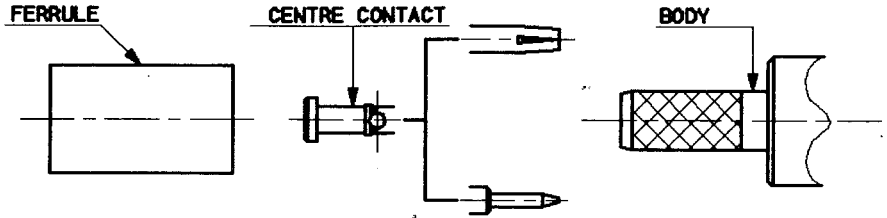
The information given here is subject to change without notice. Design changes may be in order to improve the product.



Superseded on

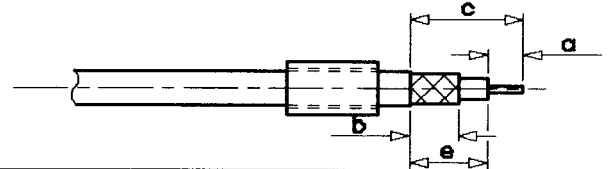


MOUNTING INSTRUCTIONS



①

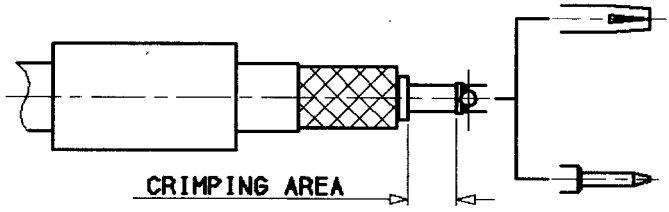
- 1-1 Slide onto the cable the ferrule
- 1-2 Strip the cable .



Stripping	a	b	c	d	e
Inch	.157	.335	.59	-	.433
mm	4	8.5	15	-	11

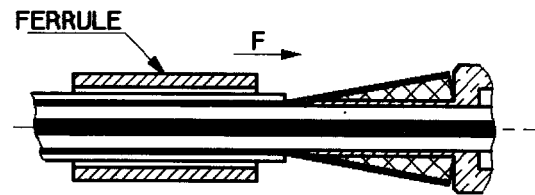
②

- 2-1 Slide on the centre contact until it bottoms against cable dielectric .
- 2-2 Crimp centre contact ,crimping tool R 282 223 000 (Hex. :.068 ) or crimping tool M22520/5-01 + dies M22520/5-13



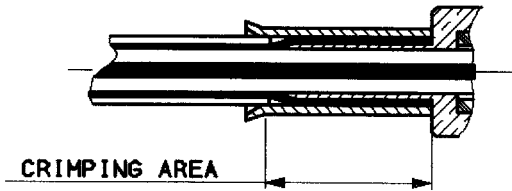
③

- 3-1 Fan the braid .
- 3-2 Slide cable into the body until bottoms against insulator .
- 3-3 Slide ferrule over the braid ( in direction F )



④

- 4-1 Crimp the ferrule with crimping tool R 282 223 000 (Hex. :.255 ) or Crimping tool M22520/5-01 + dies M22520/5-13
- 4-2 Cut the excess of braid .



ISSUE	REVISION No	DESCRIPTION	BY	DATE
.	.	.	.	.
.	.	.	.	.
.	.	.	.	.
.	.	.	.	.

Initiated on 7 OCT 91

The information given here is subject to change without notice. Design changes may be in order to improve the product.



Superseded on \_\_\_\_\_