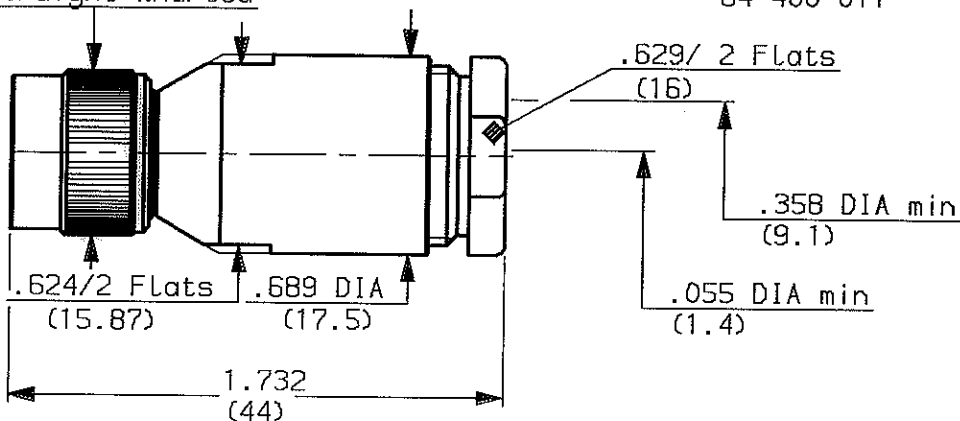


.570DIA / Straight knurled
(14.5)

84-400-011



weight oz (g)

CABLES : RG6 KX50

CHARACTERISTICS

NOMINAL IMPEDANCE	75 Ω
FREQUENCY RANGE	0-1.5 GHz
TEMPERATURE RATING	-65/+165 °C
VSWR	AD Max
RF INSERTION LOSS	AD /F dB Maxi
VOLTAGE RATING	500 Vrms Maxi
DIELECTRIC WITHSTANDING VOLTAGE	1500 Vrms mini
INSULATION RESISTANCE	5000 Mo mini
HERMETIC SEAL	NA cc/s - Atm.cm ³ /s
LEAKAGE (pressurized only)	NA psi - MPa

STANDARDISATION	CECC 22200/TNC CEI 169-17/TNC MIL STD348-313/TNC
CABLE RETENTION	39.16 Lb mini 178 N
CENTER CONTACT RETENTION	
Axial force - mating end	5.984 Lb mini 27.2 N
Axial force - opposite end	5.984 Lb mini 27.2 N
Torque (Min)	NA Inch.oz - cm.N
RECOMMENDED TORQUES	
Mating	NA Inch.Lb - cm.N
Panel nut	NA Inch.Lb - cm.N
Clamp nut	39.825 Inch.Lb 450 cm.N

CONSTRUCTION

CONNECTOR PARTS	MATERIALS	FINISH
BODY	BRASS	NICKEL
OUTER CONTACT	BRASS	NICKEL
CENTER CONTACT	BRASS	GOLD
INSULATORS	PTFE	-
GASKET	SILICONE RUBBER	-
-	-	-
-	-	-
-	-	-
-	-	-

ISSUE	REVISION No	DESCRIPTION	BY	DATE
.
.
.

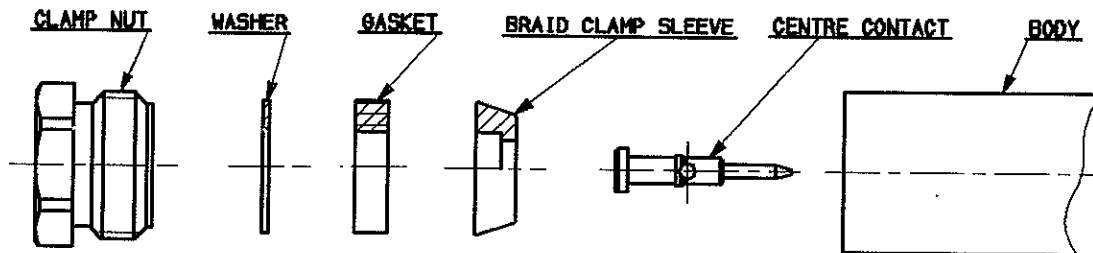
Initiated on 10-OCT-90

The information given here is subject to change without notice. Design changes may be in order to improve the product.



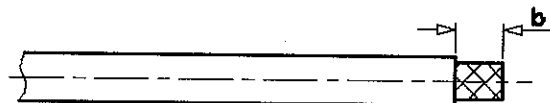
Superseded on

MOUNTING INSTRUCTIONS



①

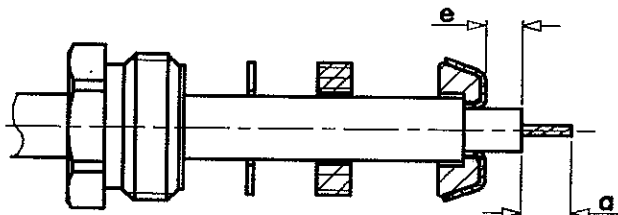
1-1 Strip the cable .



Stripping	a	b	c	d	e
Inch	.118	.393	-	-	.138
mm	-	-	-	-	-

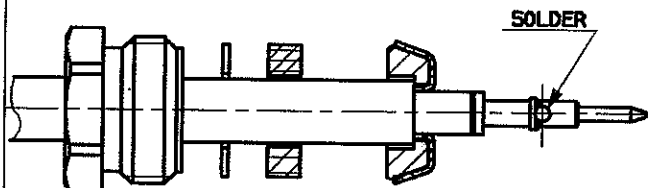
②

- 2-1 Slide the clamp nut, the washer and the gasket onto the cable .
- 2-2 Slide clamp braid sleeve over braid .
- 2-3 Fold back braid and trim off surplus braid .
- 2-4 Trim back dielectric as shown .



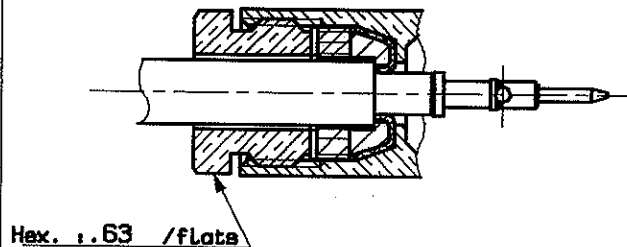
③

3-1 Solder the cable inner conductor into centre contact .



④

4-1 Screw sub-assembly into the connector body .
Recommended coupling torque
39.825 in.lb



ISSUE	REVISION No	DESCRIPTION	BY	DATE
.
.
.

Initiated on 2 OCT 91

The information given here is subject to change without notice. Design changes may be in order to improve the product.



Superseded on _____