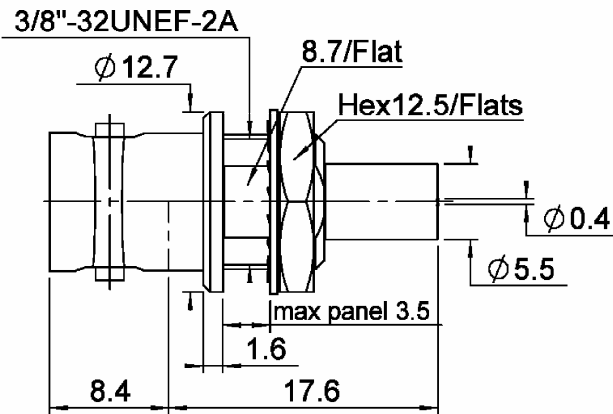


**STRAIGHT BULKHEAD JACK FRONT MOUNT**

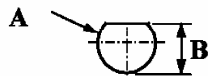
**R142A.306.500**

**FOR CABLE 2.6/75S**

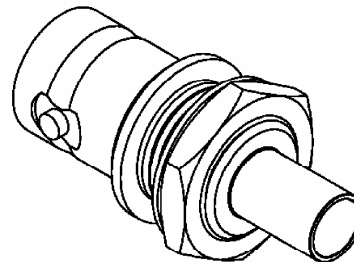
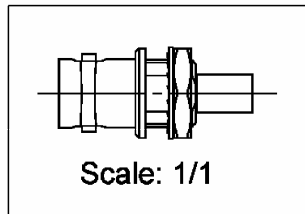
Series : **ECO BNC 75**



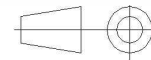
**PANEL CUT OUT**



mm		
	Maxi	mini
<b>A</b>	9.7	9.6
<b>B</b>	8.85	8.75



All dimensions are in mm.



COMPONENTS	MATERIALS	PLATING (µm)
BODY	BRASS	NICKEL
CENTER CONTACT	BRONZE	GOLD
OUTER CONTACT		
INSULATOR	PTFE	
GASKET		
OTHERS PARTS	BRASS	NICKEL
-	-	-
-	-	-

Issue : 0909 A

In the effort to improve our products, we reserve the right to make changes judged to be necessary.



**STRAIGHT BULKHEAD JACK FRONT MOUNT**

**R142A.306.500**

**FOR CABLE 2.6/75S**

Series : **ECO BNC 75**

**PACKAGING**

Standard	Unit	Other
<b>100</b>	<b>'W' option</b>	<b>Contact us</b>

**SPECIFICATION**

**ELECTRICAL CHARACTERISTICS**

Impedance	<b>75</b>	$\Omega$
Frequency	<b>0-1</b>	GHz
VSWR	<b>1.3 + 0.0000</b>	x F(GHz) Maxi
Insertion loss	<b>0.2</b>	$\sqrt{F}$ (GHz) dB Maxi
RF leakage	- ( <b>NA</b> )	- F(GHz) dB Maxi
Voltage rating	<b>335</b>	Veff Maxi
Dielectric withstanding voltage	<b>1000</b>	Veff mini
Insulation resistance	<b>5000</b>	M $\Omega$ mini

**CABLE ASSEMBLY**

Stripping	a	b	c	d	e	f
mm	3.00	9.00	0.00	0.00	5.00	1.00

Assembly instruction :

Recommended cable(s)

RG 179

RG 187

Characteristics indicated on this data sheet are those that can be achieved with the highest performance cable. Intrinsic limitations of the cable may diminish the performance of the assembly

Cable retention

- pull off	<b>40</b>	N mini
- torque	<b>NA</b>	N.cm

**MECHANICAL CHARACTERISTICS**

Center contact retention		
Axial force – Mating end	<b>10</b>	N mini
Axial force – Opposite end	<b>10</b>	N mini
Torque	<b>NA</b>	N.cm mini

**TOOLING**

Part Number	Description	Hexagon
R282.211.000	CRIMPING TOOL	4.52
R282.235.011	CRIMPING DIES M22520/5-11	1.73
R282.223.000	CRIMPING TOOL	1.73
R282.235.009	CRIMPING DIES M22520/5.09	1.73-4.52
R282.293.000	CRIMPING TOOL M22520/5-01	

Recommended torque		
Mating	<b>NA</b>	N.cm
Panel nut	<b>NA</b>	N.cm
Clamp nut	<b>NA</b>	N.cm
A/F clamp nut	<b>0.0000</b>	mm

Mating life	<b>100</b>	Cycles mini
Weight	<b>7.8000</b>	g

**ENVIRONMENTAL**

Operating temperature	<b>-40/+85</b>	$^{\circ}$ C
Hermetic seal	<b>NA</b>	Atm.cm <sup>3</sup> /s
Panel leakage	<b>NA</b>	

**OTHER CHARACTERISTICS**

Issue : **0909 A**

In the effort to improve our products, we reserve the right to make changes judged to be necessary.

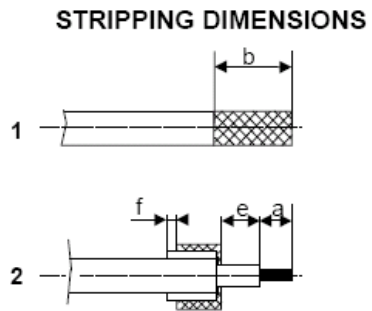
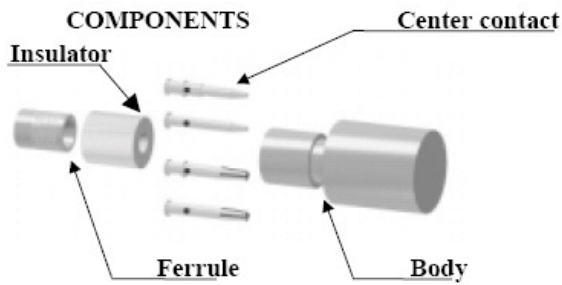


**STRAIGHT BULKHEAD JACK FRONT MOUNT**

**R142A.306.500**

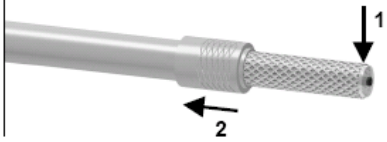
**FOR CABLE 2.6/75S**

Series : ECO BNC 75



**1**

Strip the cable as shown in sketch 1.  
Slide the ferrule until it bottoms against the sleeve.



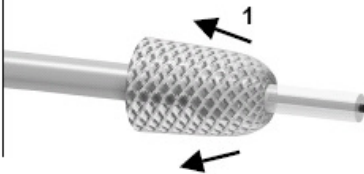
**4**

Slide the center contact on until it bottoms against the insulator back nut.  
Solder or crimp the contact with crimping tool (see connector TDS)



**2**

Fold the braid back.



**5**

Mount the body onto the sub-assembly.



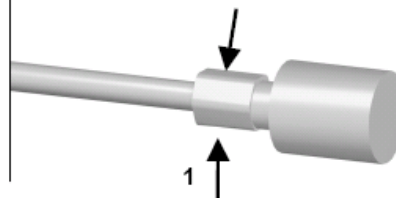
**3**

Trim the inner conductor as shown in sketch 2.  
Slide insulator onto cable dielectric.



**6**

Crimp the body with crimping tool ( see connector TDS ).



Issue : 0909 A

In the effort to improve our products, we reserve the right to make changes judged to be necessary.

