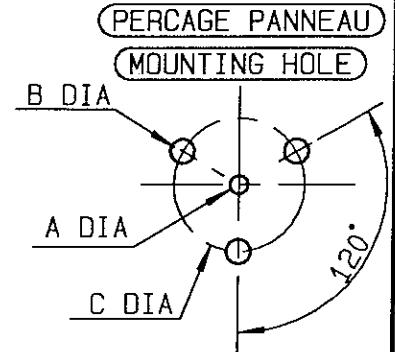
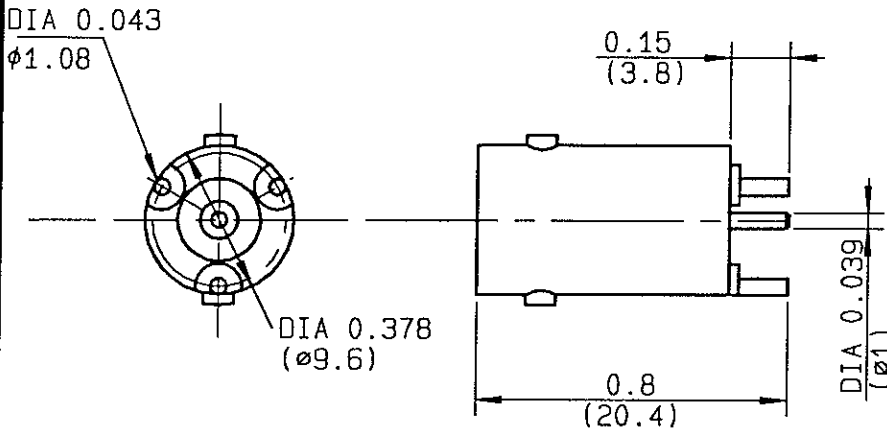


**STRAIGHT RECEPTACLE FOR PRINTED CIRCUIT
PACKAGING BY100 SELECTIVE TIN PLATE**

R141.508.200
SERIES BNC



	MM		INCH	
	maxi	mini	maxi	mini
A	1.3	1.1	0.051	0.043
B	1.7	1.5	0.067	0.059
C	8.65	8.55	0.341	0.337

NOMINAL IMPEDANCE	50 Ω	CABLES :	
FREQUENCY RANGE	0-4 GHz		
TEMPERATURE RATING	-65/+165 °C		
V.S.W.R	NA + 0 x F(GHz)Maxi		
RF INSERTION LOSS	NA √F(GHz) dB Maxi		
VOLTAGE RATING	500 Veff Maxi		
DIELECTRIC WITHSTANDING VOLTAGE	1500 Veff Mini		
INSULATION RESISTANCE	5000 M ΩMini	OTHERS CHARACTERISTICS	
HERMETIC SEAL	NA Atm.cm ³ /s	CABLE RETENTION	NA N Mini
LEAKAGE (pressurized only)	NA	CENTER CONTACT RETENTION	
MECHANICAL DURABILITY	Cycles	Axial force - mating end	18.1 N Mini
WEIGHT	4.91 gr	Axial force - opposite end	NA N Mini
SPECIFICATION		Torque	NA cm.N Mini
		RECOMMENDED TORQUES	
		Mating	NA cm.N
		Panel nut	NA cm.N
		Clamp nut	NA cm.N

CONNECTOR PARTS	MATERIALS	FINISH	(all values are given) in micrometers
BODY	BRASS	NICKEL + SELECTIVE TIN PLATE	
OUTER CONTACT			
CENTER CONTACT	BRASS	SILVER 5 OVER COPPER 0.5	
INSULATOR	PTFE	-	
GASKET		-	
OTHERS PIECES			

ISSUE 9707A00
 CREATION DATE 16-MAY-91
 FILE PART-NUMBER 91-0400-173



The information given here is subject to change without notice.
 Design changes may be in order to improve the product.

Connect to the future