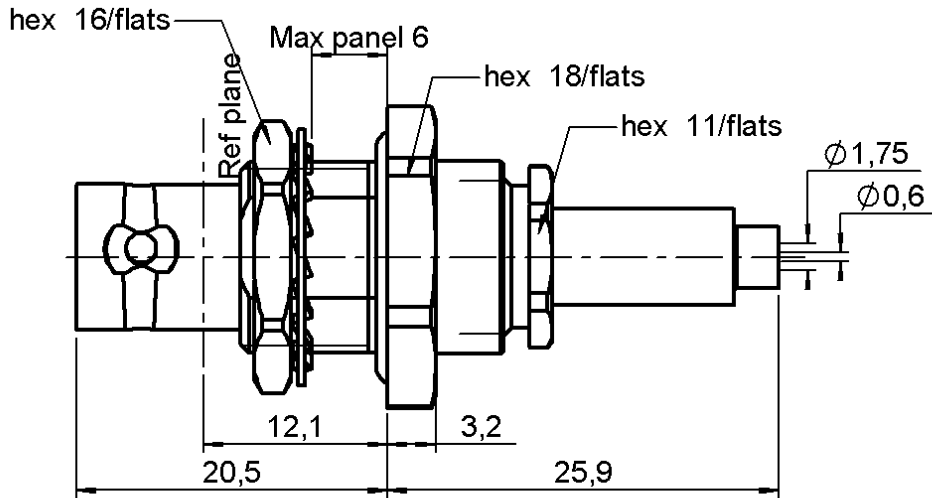


STRAIGHT BULKHEAD JACK CRIMPED TYPE SEAL

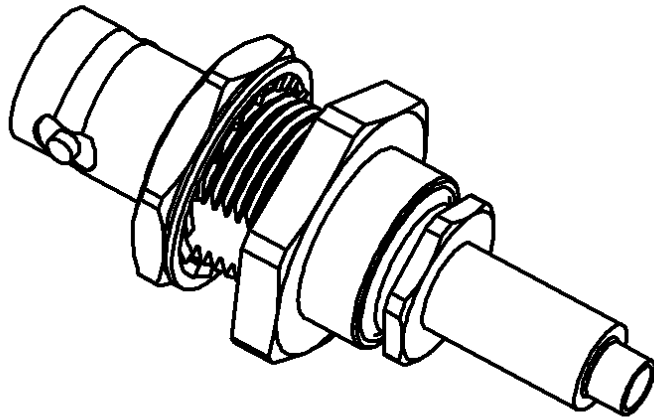
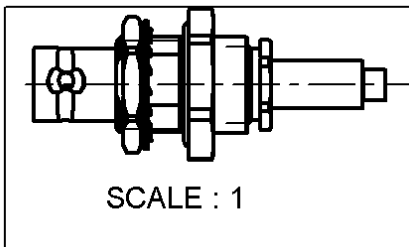
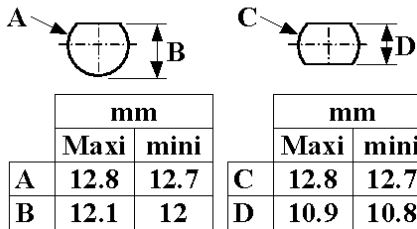
R141.331.000

PANEL CABLE 2.6/50

Series : BNC



PANEL CUT OUT



All dimensions are in mm.



COMPONENTS	MATERIALS	PLATINGS (μm)
BODY	BRASS	NICKEL 2
CENTER CONTACT	BERYLLIUM COPPER	GOLD 0.5 OVER NICKEL 2
OUTER CONTACT	-	-
INSULATOR	PTFE	-
GASKET	SILICONE RUBBER	-
OTHERS PARTS	BRASS	NICKEL 2
-	-	-
-	-	-

Issue : 0215 J

In the effort to improve our products, we reserve the right to make changes judged to be necessary.



STRAIGHT BULKHEAD JACK CRIMPED TYPE SEAL

R141.331.000

PANEL CABLE 2.6/50

Series : **BNC**

PACKAGING

Standard	Unit	Other
100		Contact us

SPECIFICATION

ELECTRICAL CHARACTERISTICS

Impedance		50 Ω
Frequency		0-4 GHz
VSWR	- +	0.000 x F(GHz) Maxi
Insertion loss		- √F(GHz) dB Maxi
RF leakage	- (- F(GHz)) dB Maxi
Voltage rating		- Veff Maxi
Dielectric withstanding voltage		1500 Veff mini
Insulation resistance		5000 MΩ mini

CABLE ASSEMBLY

Stripping	a	b	c	d	e	f
mm	7.00	8.50	28.5	0.00	21.5	0.00

Assembly instruction :

Recommended cable(s)
 RG 316
 RG 188
 KX 22A

Cable retention

- pull off **40** N mini
- torque - N.cm

MECHANICAL CHARACTERISTICS

Center contact retention		
Axial force – Mating end	27	N mini
Axial force – Opposite end	27	N mini
Torque	-	N.cm mini

TOOLING

Part Number	Description	Hexagon
.	.	.
R282.223.000	CRIMPING TOOL	1.73-5.41
R282.293.000	CRIMPING TOOL	-
R282.235.011	CRIMPING DIES	1.73-5.41

Recommended torque		
Mating	-	N.cm
Panel nut	-	N.cm
Clamp nut	-	N.cm
A/F clamp nut	0.000	mm

Mating life	0	Cycles mini
Weight	0.000	g

OTHERS CHARACTERISTICS

-

ENVIRONMENTAL

Operating temperature	-65,+165	° C
Hermetic seal	-	Atm.cm3/s
Panel leakage	-	

Issue : **0215 J**

In the effort to improve our products, we reserve the right to make changes judged to be necessary.



STRAIGHT BULKHEAD JACK CRIMPED TYPE SEAL

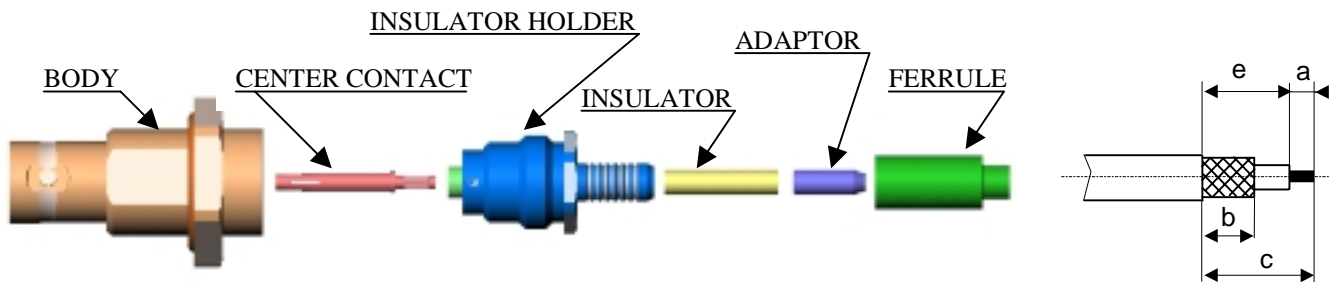
R141.331.000

PANEL CABLE 2.6/50

Series : BNC

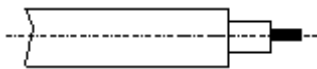
COMPONENTS

STRIPPING DIMENSIONS



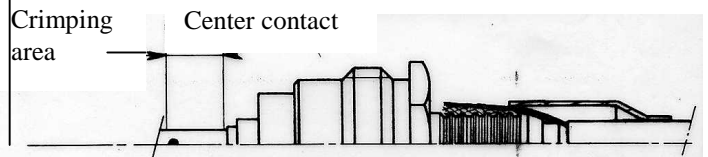
1

Strip the cable.
Mount the ferrule on the cable



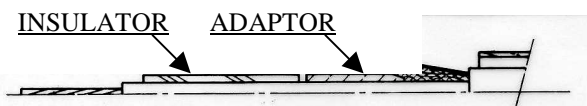
3

Mount the insulator holder under the braid.
Put the ferrule on the braid.
Crimp the ferrule with crimping tool.
Crimp the center contact with crimping tool.



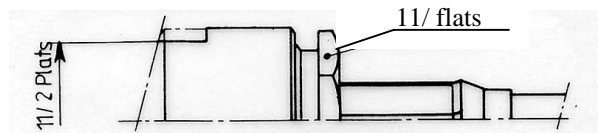
2

Mount adaptor and the insulator on the dielectric



4

Mount the assembly in the connector body and tighten the insulator holder.
Coupling assembly : 150 N/cm



Issue : 0215 J

In the effort to improve our products, we reserve the right to make changes judged to be necessary.

