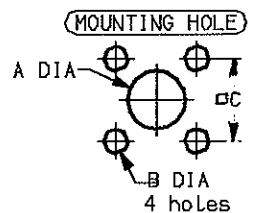
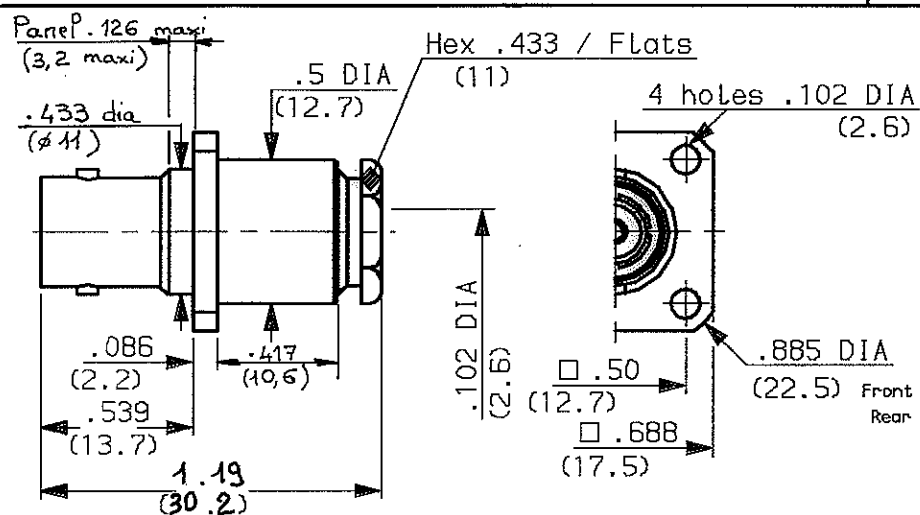


STRAIGHT FLANGE JACK CLAMP TYPE  
CABLE 2.2/50 DBR

SERIES: BNC 1 / 2

92-0019-060



	MM		INCH	
	mini	maxi	mini	maxi
A	12.9	13	.507	.511
A	11.2	11.3	.441	.444
B	2.6	2.7	.102	.106
C	12.65	12.75	.498	.502

CABLES : TS2619

weight oz ( g )

CHARACTERISTICS

NOMINAL IMPEDANCE	50 $\Omega$
FREQUENCY RANGE	0-4 GHz
TEMPERATURE RATING	-65/+165 °C
VSWR	1,40 Maxi
RF INSERTION LOSS to 3 GHz	0,2 dB Maxi
VOLTAGE RATING	500 Vrms Maxi
DIELECTRIC WITHSTANDING VOLTAGE	1000 Vrms mini
INSULATION RESISTANCE	5000 Ma mini
HERMETIC SEAL	NA cc/s - Atm.cm3/s
LEAKAGE (pressurized only)	NA psi - MPa

STANDARDISATION	NF-C-93564 CECC 22120
CABLE RETENTION	TBD Lb mini - N
CENTER CONTACT RETENTION	
Axial force - mating end	5.94 Lb mini 27 N
Axial force - opposite end	5.94 Lb mini 27 N
Torque (Min)	NA Inch.oz - cm.N
RECOMMENDED TORQUES	
Mating	NA Inch.Lb - cm.N
Panel nut	NA Inch.Lb - cm.N
Clamp nut	39.825 Inch.Lb 450 cm.N

CONSTRUCTION

CONNECTOR PARTS	MATERIALS	FINISH
BODY	BRASS	NICKEL
OUTER CONTACT	BRASS	NICKEL
CENTER CONTACT	BERYLLIUM COPPER	GOLD
INSULATORS	PTFE	-
GASKET	SILICONE RUBBER	-
-	-	-
-	-	-
-	-	-
-	-	-
-	-	-

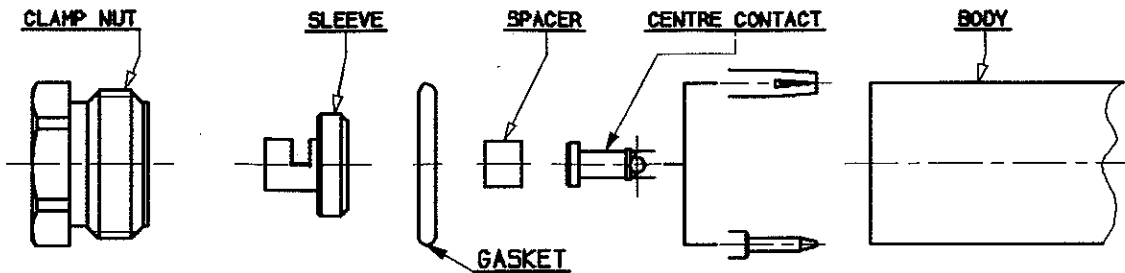
ISSUE	REVISION No	DESCRIPTION	BY	DATE
.	.	.	.	.
.	.	.	.	.
.	.	.	.	.
.	.	.	.	.

Initiated on 21-MAY-92  
Superseded on

The information given here is subject to change without notice. Design changes may be in order to improve the product.

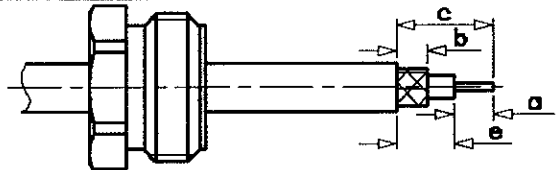


STRAIGHT FLANGE JACK CLAMP TYPE  
CABLE 2.2/50 DBR



①

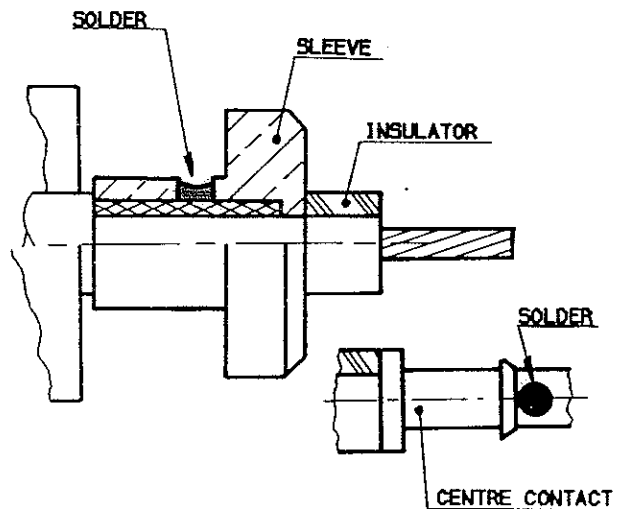
- 1-1 Slide clamp nut onto the cable .
- 1-2 Strip the cable .
- 1-3 Tin the cable inner conductor .



Stripping	a	b	c	d	e
Inch	.157	.216	.492	-	.334
mm	4	5.5	12.5	-	8.5

②

- 2-1 Slide the sleeve between the braid .
- 2-2 Solder the braid into the sleeve .
- 2-3 Slide the spacer .

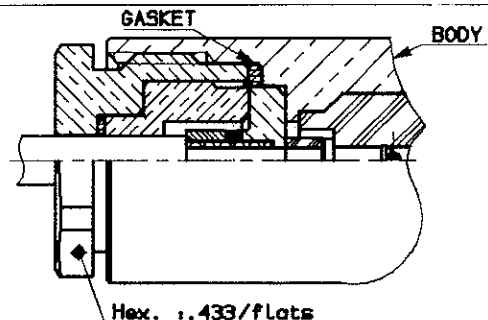


③

- 3-1 Solder the cable inner conductor into centre contact .
- 3-2 Slide the back nut over the clamp assembly .

④

- 4-1 Slide the gasket into the connector body .
- 4-2 Screw sub-assembly into the connector body .  
recommended coupling torque  
39.825 in. Lb )



ISSUE	REVISION No	DESCRIPTION	BY	DATE
.	.	.	.	.
.	.	.	.	.
.	.	.	.	.

Initiated on 21-MAY-92

The information given here is subject to change without notice. Design changes may be made in order to improve the product.



Superseded on