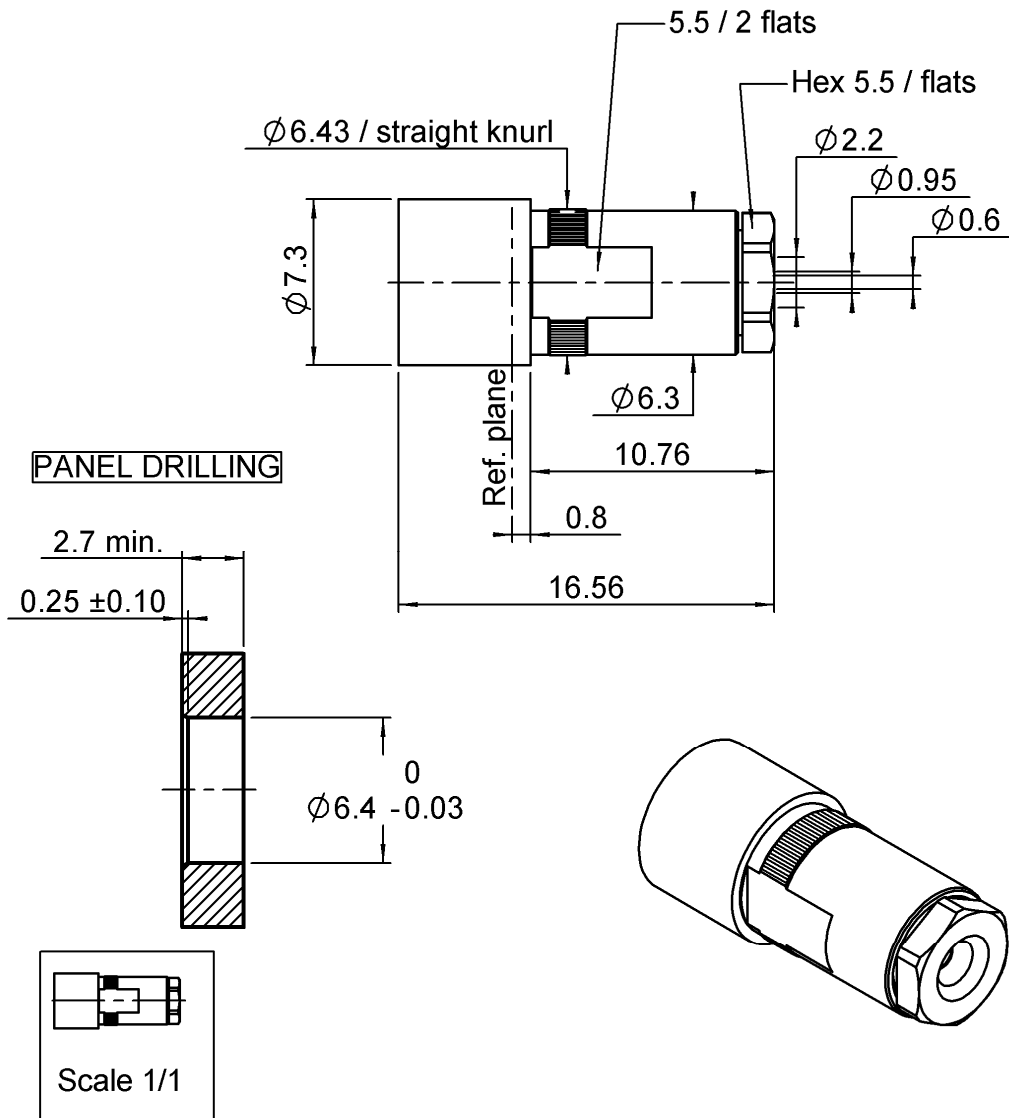


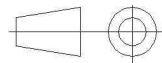
STRAIGHT JACK CLAMP TYPE
PRESS MOUNT - CABLE 2/50 S

R128.203.701

Series : BMA



All dimensions are in mm.



COMPONENTS	MATERIALS	PLATING (µm)
BODY	STAINLESS STEEL	PASSIVATION
CENTER CONTACT	BERYLLIUM COPPER	GOLD 2.5 OVER NICKEL 2
OUTER CONTACT	BERYLLIUM COPPER	NPGR
INSULATOR	PTFE	
GASKET	-	
OTHERS PARTS	STAINLESS STEEL	PASSIVATION
-	-	-
-	-	-

Issue : 0940 B

In the effort to improve our products, we reserve the right to make changes judged to be necessary.



STRAIGHT JACK CLAMP TYPE

R128.203.701

PRESS MOUNT - CABLE 2/50 S

Series : **BMA**

PACKAGING

Standard	Unit	Other
100	'W' option	Contact us

SPECIFICATION

ELECTRICAL CHARACTERISTICS

Impedance		50	Ω
Frequency		0-12.4	GHz
VSWR	1.05 +	0,0250	x F(GHz) Maxi
Insertion loss		0.03	\sqrt{F} (GHz) dB Maxi
RF leakage	- (50	- F(GHz)) dB Maxi
Voltage rating		250	Veff Maxi
Dielectric withstanding voltage		750	Veff mini
Insulation resistance		5000	M Ω mini

CABLE ASSEMBLY

Stripping	a	b	c	d	e	f
mm	1,40	2,20	3,70	3,20	2,30	0,00

Assembly instruction :

Recommended cable(s)
 RG 178 LC
 RG 178
 RG 196
 KX 21

Characteristics indicated on this data sheet are those that can be achieved with the highest performance cable. Intrinsic limitations of the cable may diminish the performance of the assembly

Cable retention

- pull off **40** N mini
 - torque **NA** N.cm

MECHANICAL CHARACTERISTICS

Center contact retention			
Axial force – Mating end		27	N mini
Axial force – Opposite end		27	N mini
Torque		NA	N.cm mini

TOOLING

Recommended torque			
Mating		NA	N.cm
Panel nut		NA	N.cm
Clamp nut		100	N.cm
A/F clamp nut		5,5000	mm

Part Number	Description	Hexagon
.	.	.

OTHER CHARACTERISTICS

Mating life		1000	Cycles mini
Weight		2,0150	g

ENVIRONMENTAL

Operating temperature		-65/+165	$^{\circ}$ C
Hermetic seal		NA	Atm.cm3/s
Panel leakage		NA	

Issue : **0940 B**

In the effort to improve our products, we reserve the right to make changes judged to be necessary.

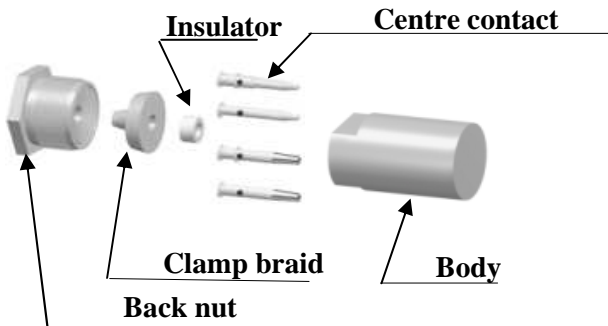


STRAIGHT JACK CLAMP TYPE
PRESS MOUNT - CABLE 2/50 S

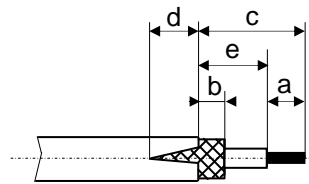
R128.203.701

Series : BMA

COMPONENTS

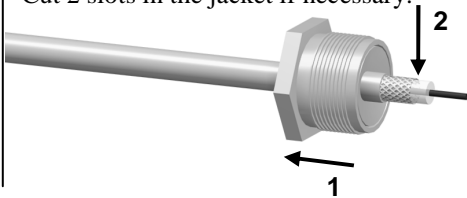


STRIPPING DIMENSIONS



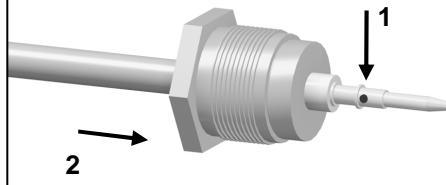
1

Slide the back nut onto the cable.
 Strip the cable.
 Cut 2 slots in the jacket if necessary.



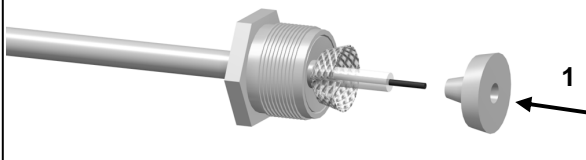
4

Solder the centre contact onto the inner conductor.
 Slide the back nut over the cable assembly.



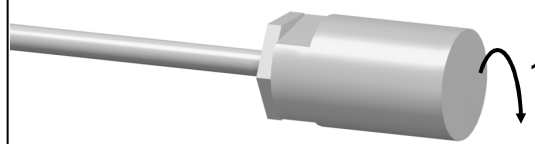
2

Slide the clamp braid sleeve between the cable dielectric and the braid.



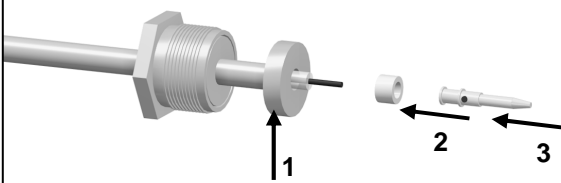
5

Screw sub-assembly into the connector body with the adapted wrench.
 Recommended coupling torque (see connector TDS).



3

Cut the braid flush with the clamp braid sleeve.
 Slide the spacer onto the cable.
 Slide the centre contact on until it bottoms against the cable dielectric.



Issue : 0940 B

In the effort to improve our products, we reserve the right to make changes judged to be necessary.

