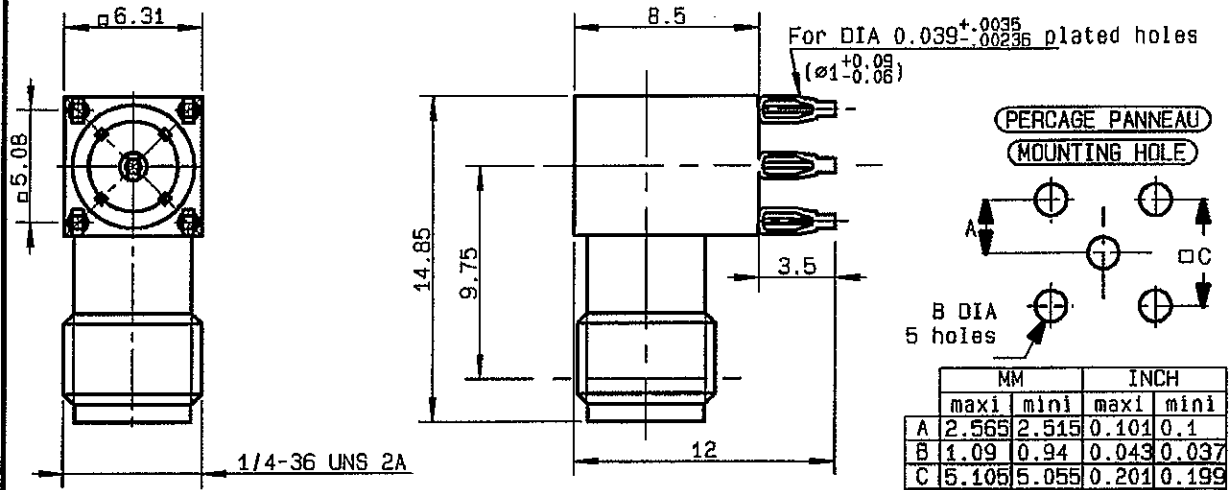


**RIGHT ANGLE RECEPTACLE FOR PCB
PRESS-FIT LEGS - COND 100**

R125.674.120
SERIES SMA



| | |
|---------------------------------|--|
| NOMINAL IMPEDANCE | 50 Ω |
| FREQUENCY RANGE | 0-18 GHz |
| TEMPERATURE RATING | -65/+165 °C |
| V.S.W.R | 1.065 + .0025 x F(GHz)Maxi |
| RF INSERTION LOSS | 0.07 \sqrt{F} (GHz) dB Maxi |
| VOLTAGE RATING | 500 Veff Maxi |
| DIELECTRIC WITHSTANDING VOLTAGE | 1000 Veff Mini |
| INSULATION RESISTANCE | 5000 M Ω Mini |
| HERMETIC SEAL | NA Atm.cm ³ /s |
| LEAKAGE (pressurized only) | NA |
| MECHANICAL DURABILITY | 500 Cycles |
| WEIGHT | 2.8 gr |
| SPECIFICATION | |

CABLES :

CONDITIONNEMENT

| Standard | Unitaire | Autre |
|------------|-------------------|-----------------------|
| 100 | Option 'W' | Nous consulter |

OTHERS CHARACTERISTICS

*** COAX TRANSMISSION LINE ONLY-1.5 a 8Ghz**

| | | |
|----------------------------|------------|-----------|
| CABLE RETENTION | NA | N Mini |
| CENTER CONTACT RETENTION | | |
| Axial force - mating end | 27 | N Mini |
| Axial force - opposite end | 27 | N Mini |
| Torque | 2.8 | cm.N Mini |
| RECOMMENDED TORQUES | | |
| Mating | NA | cm.N |
| Panel nut | NA | cm.N |
| Clamp nut | NA | cm.N |

| CONNECTOR PARTS: | MATERIALS | FINISH | (all values are given in micrometers) |
|------------------|------------------|------------------------|---------------------------------------|
| BODY | STAINLESS STEEL | GOLD 0.8 OVER NICKEL 2 | |
| OUTER CONTACT | | | |
| CENTER CONTACT | BERYLLIUM COPPER | GOLD 1.3 OVER NICKEL 2 | |
| INSULATOR | PTFE | - | |
| GASKET | | - | |
| OTHERS PIECES | PHOSPHOR BRONZE | TIN 3 OVER NICKEL 2 | |

PERRIN

ISSUE
0613B

CREATION DATE
10/12/1997

FILE PART-NUMBER
95-0108-554



RADIALL®

The information given here is subject to change without notice.
Design changes may be in order to improve the product.

Connect to the future

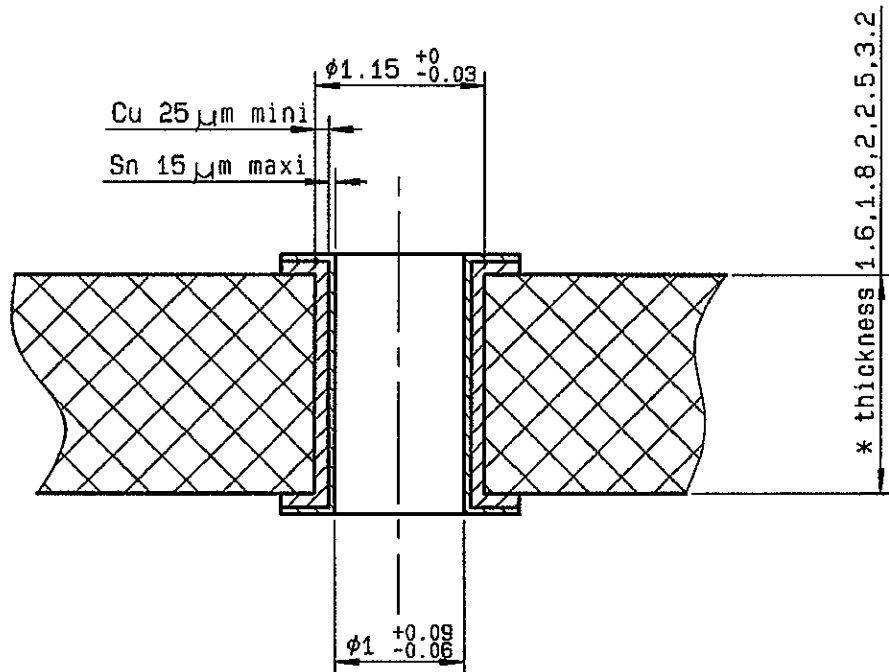


R125.674.120

ISSUE 0613/B

SERIES SMA

| | |
|-------------------|--|
| PC BOARD MATERIAL | GLASS FIBRE EPOXYD NEMA:G10,G11,FR4,FR5 DIN 40802 : EP-GC 01 , EP-GC 02 |
| THICKNESS | 1.6 mm * |
| HOLE | FOR 1mm COMPLIANT PIN |
| BORE-HOLE | $\phi 1.15 \begin{smallmatrix} 0 \\ -0.03 \end{smallmatrix}$ |
| COPPER | > 25 μm |
| TIN | < 15 μm |
| FINAL DIAMETER | $\phi 1 \begin{smallmatrix} +0.09 \\ -0.06 \end{smallmatrix}$ |



PERRIN

The information given here is subject to change without notice. Design changes may be in order to improve the product.



R125.674.120

ISSUE 0613 B

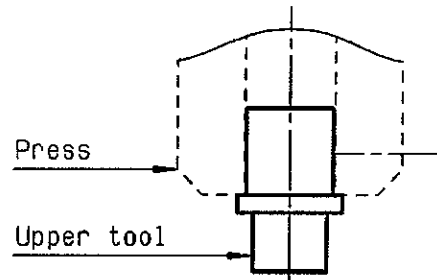
SERIES
SMA

MOUNTING INSTRUCTIONS ON THE PCB
STRAIGHT CONNECTORS WITH PRESS-FIT TERMINATION

①

Slide the upper tool (R282.878.500) into the machine (press) or the flat tool .

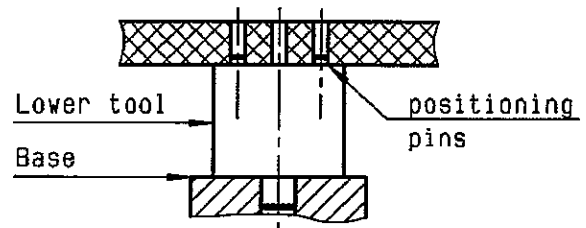
-
-
-



②

Slide the lower tool (R282.878.523) into the base and place correctly the PCB on this tool .(positioning pins)

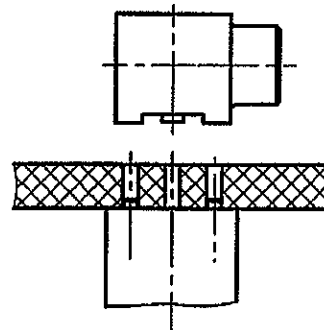
-
-
-



③

Place correctly the connector with press-fit termination on the PCB and introduce the press-fit extremity in the holes of the PCB .

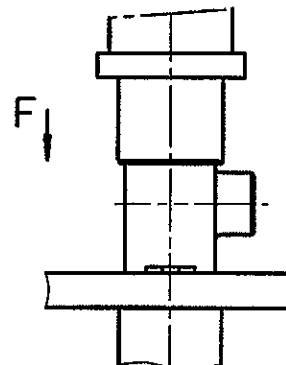
-
-
-



④

Push on the top (about 500 N) until total insertion .(in direction F) (Push connector body until it bottoms against PCB) .

Remove the connector and the PCB assembly .





R125.674.120

ISSUE 0613 B

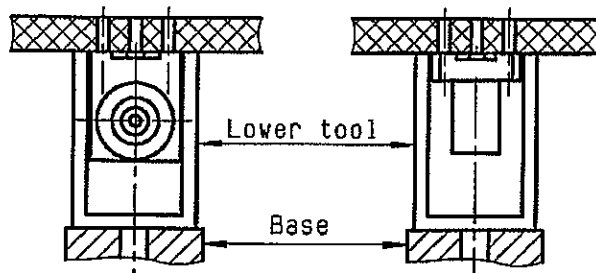
SERIES SMA

REPLACEMENT INSTRUCTIONS ON THE PCB
STRAIGHT AND RIGHT ANGLE CONNECTORS WITH PRESS-FIT TERMINATION

①

Place correctly the PCB and the connector on lower tool (R282.878.534)

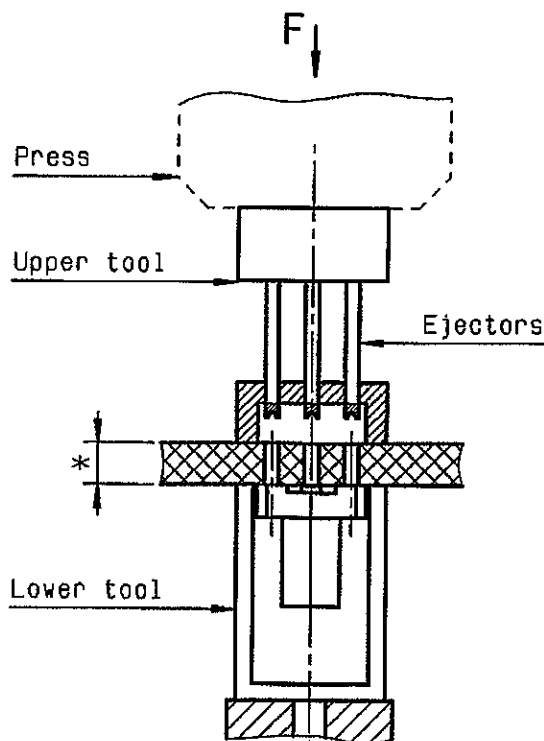
-
-
-



②

Place the upper tool (R282.878.513) at the back of the connector and place correctly the ejectors :

- on Press-fit pins .
- (if PCB thickness < 3.5 mm)
- in the holes of the PCB
- (if PCB thickness > 3.5 mm)



③

Press the back of the upper tool to remove the connector (about 500N) into the connector slide down onto lower tool .

-
-
-

④

CAUTION !

It's impossible to use a COAXIPRESS a twice .

A plated hole of the PCB can't be used over 3 times .

-

* panel thickness: 1.6 to 7 mm

PERRIN