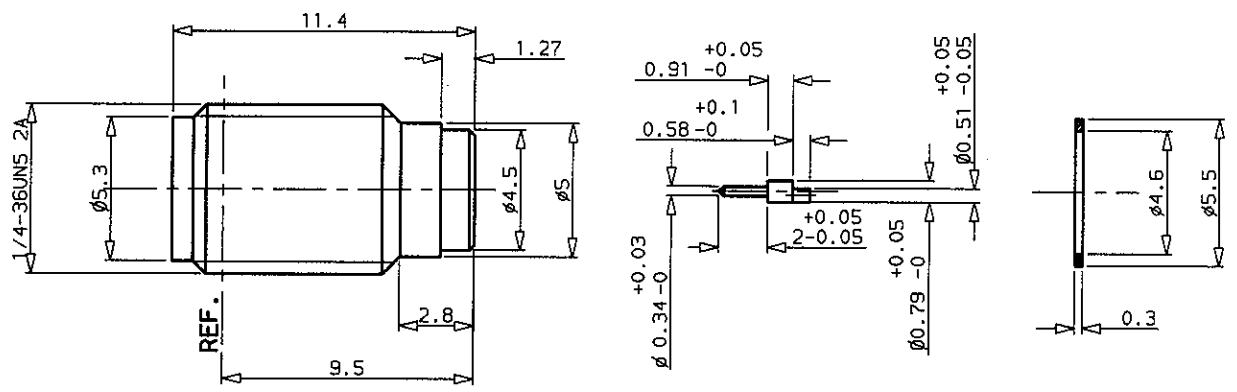


/usr2/DT.grange/fiches/s.Aftr125605
R. INC 6434

**NON GLASS HERMETIC RECEPTACLE
SCREW-IN TYPE**

SERIES: SMA

01/02



BURN IN : At the end of manufacturing, connector is submitted to a burn in test as follows:

Progressive increase of temperature from +25°C to +125°C. Maintain high temperature (+125°C) for 2 hours.

CHARACTERISTICS

NOMINAL IMPEDANCE	50	Ω
FREQUENCY RANGE	DC-18	GHz
TEMPERATURE RATING	-55/+150	°C
VSWR	1.20	Max
RF INSERTION LOSS	0.2	dB Max
VOLTAGE RATING	450	Vrms
DIELECTRIC WITHSTANDING VOLTAGE	1000	Vrms
INSULATION RESISTANCE	5000	MΩ
HERMETIC SEAL	6.10 ⁻⁷	cc/s cm ³ /s
-	-	-
-	-	-
-	-	-

STANDARDISATION	MIL C 39012	
MATING TORQUE RECOMMENDED	7.088-8.86	Inch. Lb 80-100 cm.N
CENTER CONTACT RETENTION		
Axial force - mating end	3.375	Lb min 15 N min
Axial force - opposite end	3.375	Lb min 15 N min
Torque (Max)	NA	inch. oz cm.N
SLIDING CONTACT (Backward)		
Sliding force	.044	Lb min 20 g min
	.22	Lb Max 100 g Max

CONSTRUCTION

CONNECTOR PARTS	MATERIALS	FINISH
Body	Stainless steel	Passivated
Center contact	Beryllium copper	Gold over copper
Sliding contact	Brass	Gold over copper
Insulators	PTFE	-
Gasket	Brass	Gold over nickel
-	-	-
-	-	-
-	-	-
-	-	-

ISSUE	REVISION No	DESCRIPTION	BY	DATE

Initiated on 12-10-88
Superseded on 05-12-89

The information given here is subject to change without notice. Design changes may be in order to improve the product.



/usr2/DT.grange/fiches/s.Afmp2R125605371
R.ENC 6M34



TECHNICAL DATA

R 125 605 371

Issue : 1942 E

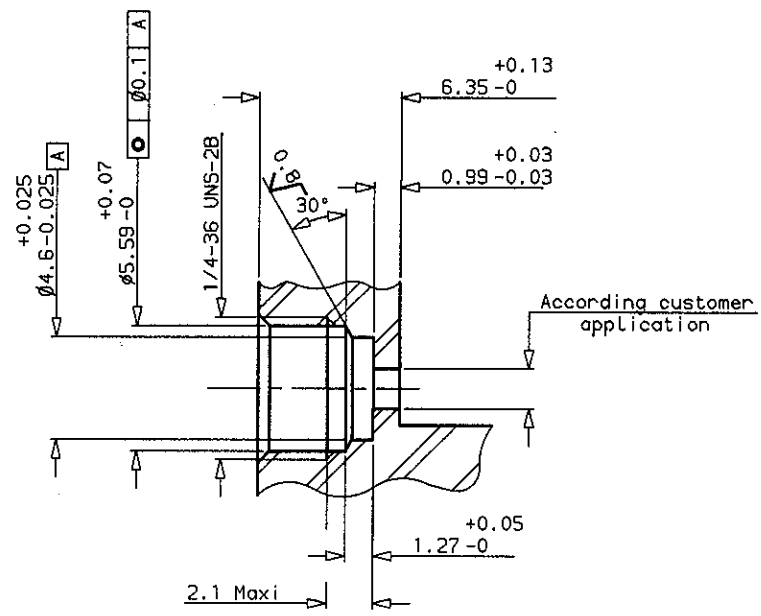
Page

NON GLASS HERMETIC RECEPTACLE
, SCREW-IN TYPE

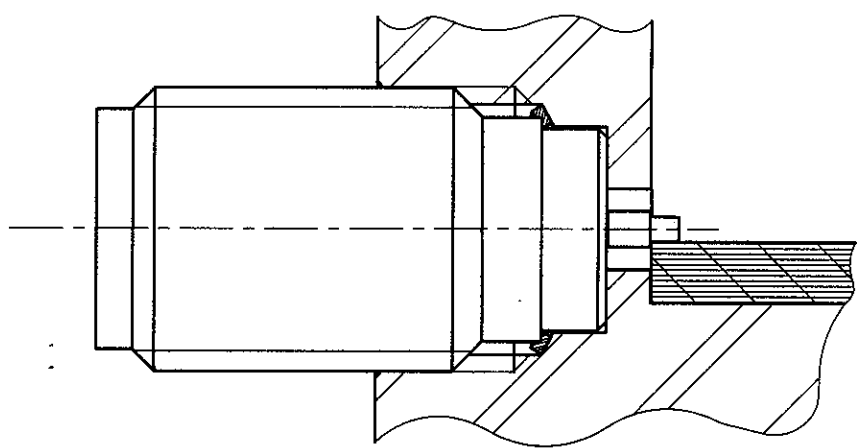
SERIES: SMA

02/02

PANEL DRILLING



RECOMMENDED MOUNTING HOLE DETAIL



Assemble metal gasket onto connector. Screw both parts into the housing. Tighten the connector up to 25 Inch-Pounds torque (use special tooling set RADIALL R282 341 012).

ISSUE	REVISION No	DESCRIPTION	BY	DATE
.
.
.

Initiated on 12-10-88
Superseded on 05-12-89

The information given here is subject to change without notice. Design changes may be in order to improve the product.

