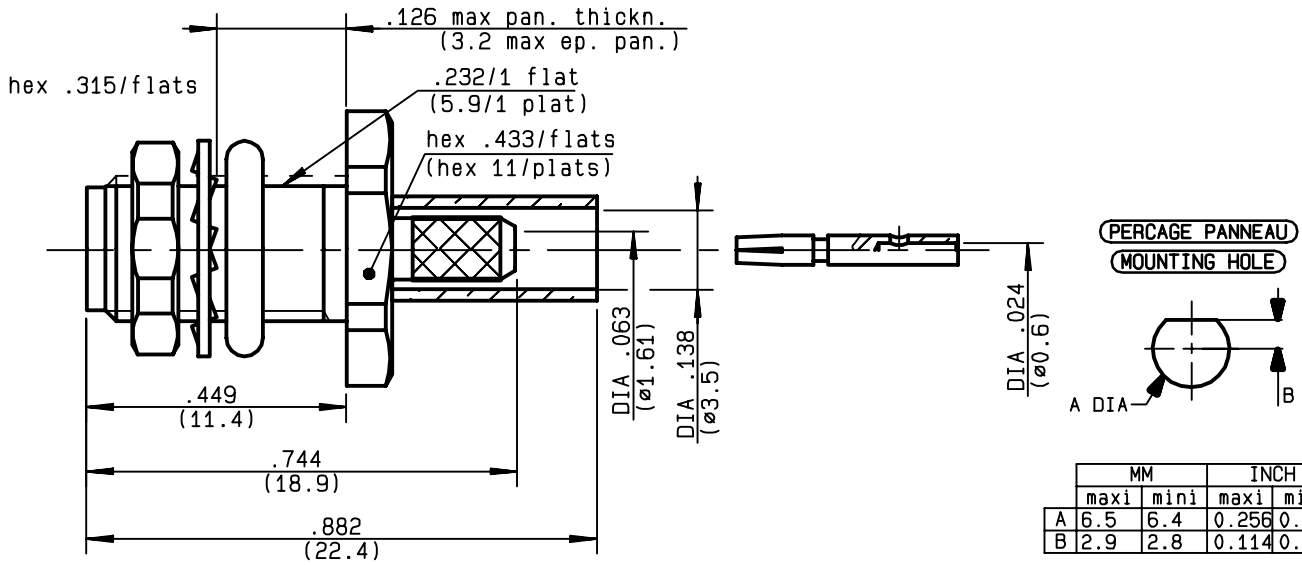


**STRAIGHT BULKHEAD JACK PANEL SEAL
CRIMP TYPE - CABLE 2.6/50 D**

R125.322.030
SERIES SMA



| MM | | INCH | |
|-------|------|-------|------|
| maxi | mini | maxi | mini |
| A 6.5 | 6.4 | 0.256 | 0.25 |
| B 2.9 | 2.8 | 0.114 | 0.11 |

| | |
|---------------------------------|---------------------------------------|
| NOMINAL IMPEDANCE | 50 Ω |
| FREQUENCY RANGE | 0-12.4 GHz |
| TEMPERATURE RATING | -65/+165 °C |
| V.S.W.R | 1.15 + .02 x F(GHz)Maxi |
| RF INSERTION LOSS | 0.06 √F(GHz) dB Maxi |
| VOLTAGE RATING | 250 Veff Maxi |
| DIELECTRIC WITHSTANDING VOLTAGE | 750 Veff Mini |
| INSULATION RESISTANCE | 5000 MΩMini |
| HERMETIC SEAL | NA Atm.cm ³ /s |
| LEAKAGE (pressurized only) | NA |
| MECHANICAL DURABILITY | 500 Cycles |
| WEIGHT | 3.77 gr |
| SPECIFICATION | |

| | |
|--|---------------------|
| CABLES : K02252D RD 316 | |
| OTHERS CHARACTERISTICS | |
| CABLE RETENTION | 110 N Mini |
| CENTER CONTACT RETENTION | |
| Axial force - mating end | 15 N Mini |
| Axial force - opposite end | 15 N Mini |
| Torque | NA cm.N Mini |
| RECOMMENDED TORQUES | |
| Mating | NA cm.N |
| Panel nut | 150 cm.N |
| Clamp nut | NA cm.N |

| | | | |
|------------------|------------------|------------------------|---------------------------------------|
| CONNECTOR PARTS: | MATERIALS | FINISH | (all values are given in micrometers) |
| BODY | STAINLESS STEEL | GOLD 0.8 OVER NICKEL 2 | |
| OUTER CONTACT | | | |
| CENTER CONTACT | BERYLLIUM COPPER | GOLD 1.3 OVER NICKEL 2 | |
| INSULATOR | PTFE | - | |
| GASKET | SILICONE RUBBER | - | |
| OTHERS PIECES | STAINLESS STEEL | GOLD 0.8 OVER NICKEL 2 | |

| | | |
|----------------|-------------------|--------------------|
| ISSUE | CREATION DATE | FILE PART-NUMBER |
| 9840C00 | 13/07/1994 | 92-0132-795 |



LELEU

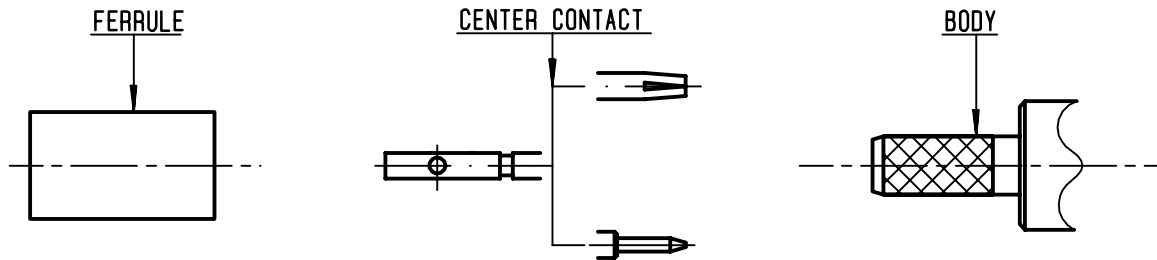
The information given here is subject to change without notice.
Design changes may be in order to improve the product .

Connect to the future



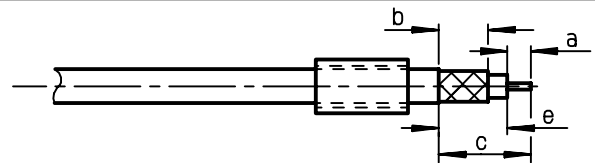
R125.322.030

ISSUE **9840C00** SERIES **SMA**



①

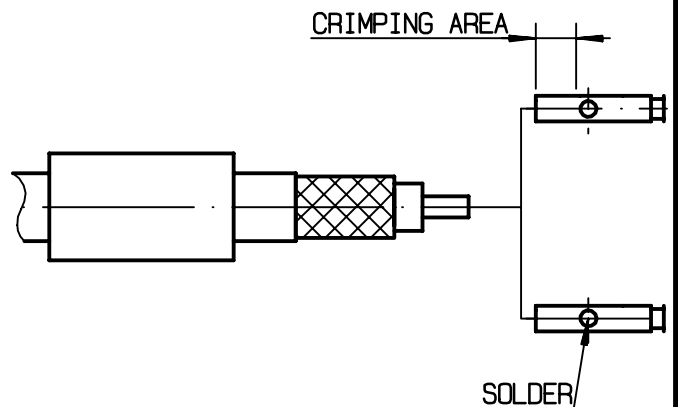
Slide onto the cable the ferrule
Strip the cable .
-
-



| Stripping | a | b | c | d | e |
|-----------|------|-------|-------|---|-------|
| inch | 0.13 | 0.236 | 0.429 | 0 | 0.299 |
| mm | 3.3 | 6 | 10.9 | | 7.6 |

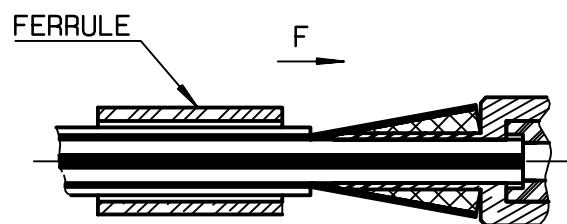
②

2-1 If crimping: Slide on the centre contact until it bottoms against cable dielectric. Crimp centre contact.
Crimping tool: R282 281 000 + positionner R282 967 012 - position 5
-
2-2 If solder: Slide the centre contact until it bottoms against cable dielectric. Solder it.



③

Fan the braid .
Slide cable into the body until it bottoms against insulator and contact snaps into insulator. Slide the ferrule over the braid. (in direction F).



④

Crimp the ferrule with crimping tool R 282 271 000 (Hex. : .151) or crimping tool R282 293 000 (M22520/5-01) + dies R282 235 037 (M22520/5-37)
Cut the excess of braid .
-
-
-
-

