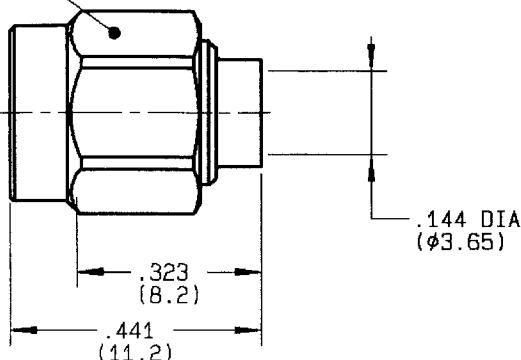


Hex .315/flats
(8.0)



WEIGHT 0 oz (- g)

CABLES : RG 402

CHARACTERISTICS

NOMINAL IMPEDANCE	50 Ω
FREQUENCY RANGE	0 - 27 GHz
TEMPERATURE RATING	-65/+105 °C
VSWR	1.05 + .004 x F(GHz)Maxi
RF INSERTION LOSS	0.03√F(GHz) dB Maxi
VOLTAGE RATING	500 Vrms Max
DIELECTRIC WITHSTANDING VOLTAGE	1500 Vrms min
INSULATION RESISTANCE	5000 MΩ min
HERMETIC SEAL	- cc/s NA Atm.cm3/s
LEAKAGE (pressurized only)	- psi NA MPa

STANDARDISATION

CABLE RETENTION	110.13 500	lb min N
CENTER CONTACT RETENTION		
Axial force - mating end	0	lb min N
Axial force - opposite end	0	lb min N
Torque (Min)	0	Inch.oz cm.N
RECOMMENDED TORQUES		
Mating	8.67 100	Inch.lb cm.N
Panel nut	0	Inch.lb cm.N
Clamp nut	0	Inch.lb cm.N

CONSTRUCTION

CONNECTOR PARTS	MATERIALS	FINISH
BODY	STAINLESS STEEL	GOLD OVER NICKEL
OUTER CONTACT	-	-
CENTER CONTACT	BRASS	GOLD OVER NICKEL
INSULATOR	PTFE	-
COUPLING NUT	STAINLESS STEEL	GOLD OVER NICKEL
-	-	-
-	-	-
-	-	-
-	-	-

ISSUE	REVISION No	DESCRIPTION	BY	DATE
.
.
.

Initiated on 04/01/93
Superseded on - - - -

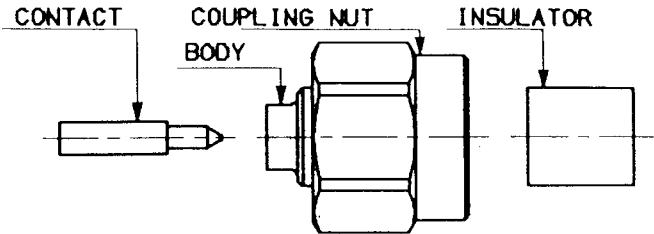
The information given here is subject to change without notice. Design changes may be in order to improve the product.



STRAIGHT PLUG FOR .141 S-R CABLE

Tool kit R282 120

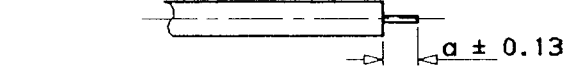
Assembly jig	: Repere 10
Positioner 1	: Repere 15
Solder gauge	: Repere 62
Positioner 2	: Repere 87
Dielectric recess gauge	: Repere 93
Dielectric recess tool	: Repere 95
Female dielectric insert tool	: Repere 34
Dielectric plunger	: Repere 35



We recommend a cable thermal preconditioning before assembly

①

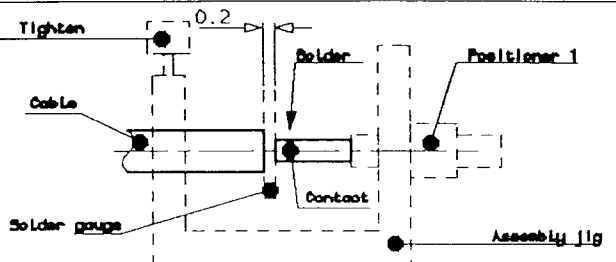
- 1-1 Strip the cable
 Stripping tool R 282 053
 Positioner R 282 067



Stripping	a	b	c	d	e
mm	3.17	-	-	-	-

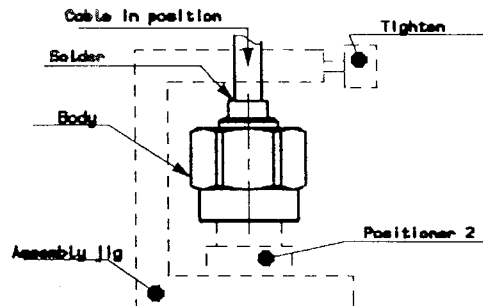
②

- 2-1 Screw the positioner 1 onto the assembly jig
 2-2 Slide contact into positioner 1
 2-3 Insert solder gauge between contact and cable
 2-4 Tighten
 2-5 Solder the contact



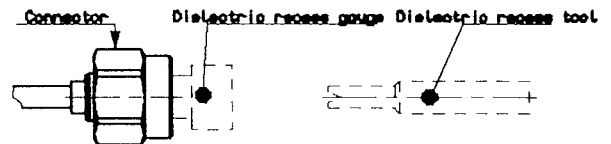
③

- 3-1 After cooling remove cable assembly from the jig
 3-2 Screw positioner 2 into the connector
 3-3 Slide cable into the connector until it bottoms against positioner 2
 3-4 Tighten
 3-5 Put 3 rings of solder around the cable and solder



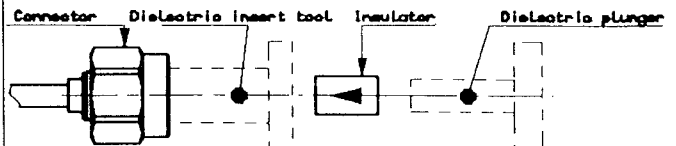
④

- 4-1 After cooling remove cable assembly from the jig
 4-2 Screw dielectric recess gauge and trim dielectric



⑤

- 5-1 Screw female dielectric insert tool onto connector and insert insulator with the dielectric plunger



IND	No MODIF	OBJET	VISA	DATE
.
.
.

Creation Date 05.01.93

Ces renseignements sont donnés à titre indicatif. Dans le but constant d'améliorer nos produits, nous nous réservons le droit d'apporter toutes modifications jugées utiles.


 101, Rue Ph. Hoffmann - Z.I. Ouest
 93116 ROSNY/S/B015 Cedex (France)
 Tel. : (1) 48 54 80 40
 Fax : (1) 48 54 83 63
 Telex: Radia A 220673 F

Mise à jour Date