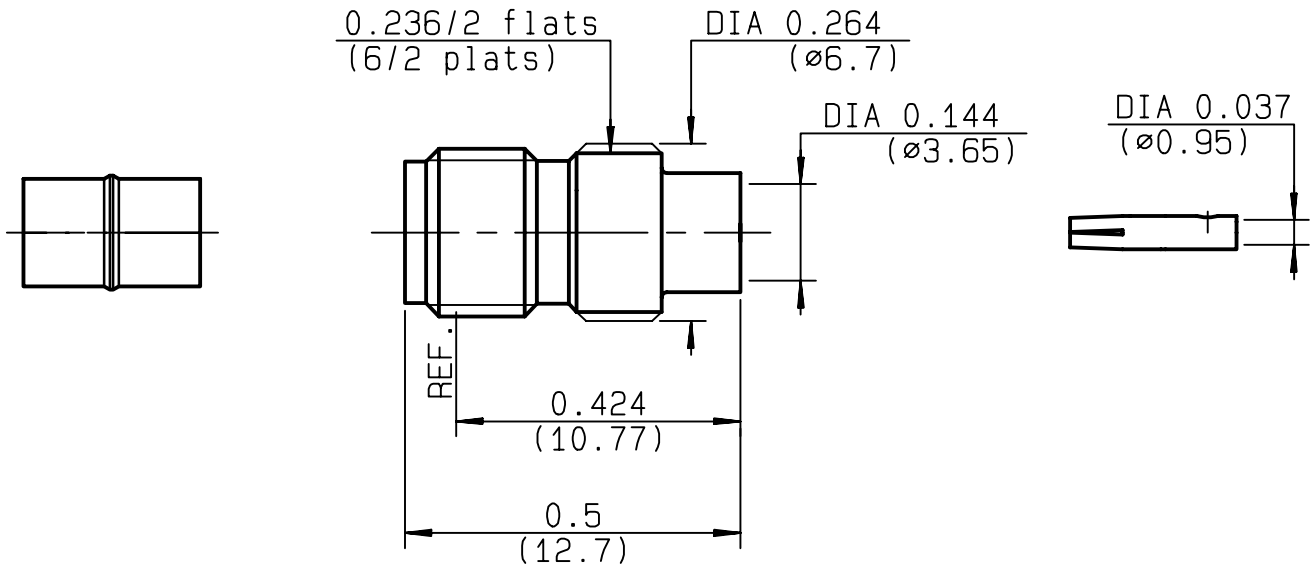


**STRAIGHT JACK SOLDER TYPE
CABLE .141**

R124.225.003
SERIES SMA-COM



NOMINAL IMPEDANCE	50 Ω	CABLES : KS 2
FREQUENCY RANGE	0-18 GHz	RG 402
TEMPERATURE RATING	-65/+105 °C	
V.S.W.R	1.05 + .01 x F(GHz)Maxi	
RF INSERTION LOSS	0.05 √F(GHz) dB Maxi	
VOLTAGE RATING	500 Veff Maxi	
DIELECTRIC WITHSTANDING VOLTAGE	1000 Veff Mini	
INSULATION RESISTANCE	5000 MΩMini	OTHERS CHARACTERISTICS
HERMETIC SEAL	NA Atm.cm ³ /s	CABLE RETENTION 270 N Mini
LEAKAGE (pressurized only)	NA	CENTER CONTACT RETENTION
MECHANICAL DURABILITY	100 Cycles	Axial force - mating end NA N Mini
WEIGHT	1.6 gr	Axial force - opposite end NA N Mini
SPECIFICATION		Torque NA cm.N Mini
		RECOMMENDED TORQUES
		Mating NA cm.N
		Panel nut NA cm.N
		Clamp nut NA cm.N

CONNECTOR PARTS:	MATERIALS	FINISH (all values are given) in micrometers
BODY	BRASS	GOLD 0.2 OVER NICKEL 2
OUTER CONTACT		
CENTER CONTACT	BERYLLIUM COPPER	GOLD 1.3 OVER COPPER 2.5
INSULATOR	PTFE	-
GASKET		-
OTHERS PIECES		

ISSUE	CREATION DATE	FILE PART-NUMBER
9847B00	18/07/1996	96-1200-088



TRIQUES

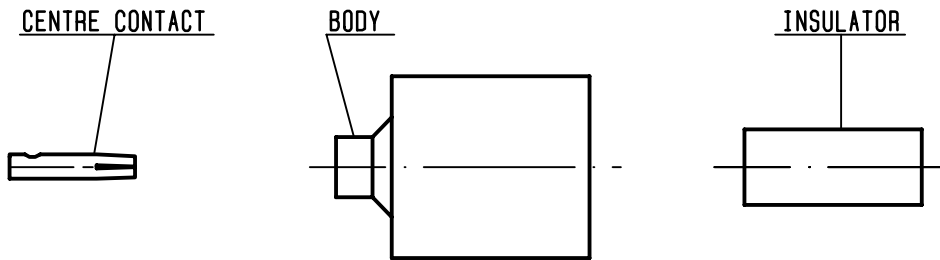
The information given here is subject to change without notice.
Design changes may be in order to improve the product .

Connect to the future



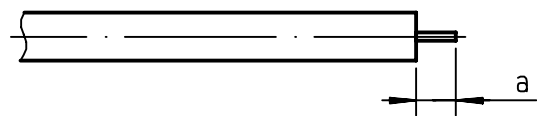
R124.225.003

ISSUE 9847B00 SERIES SMA-COM



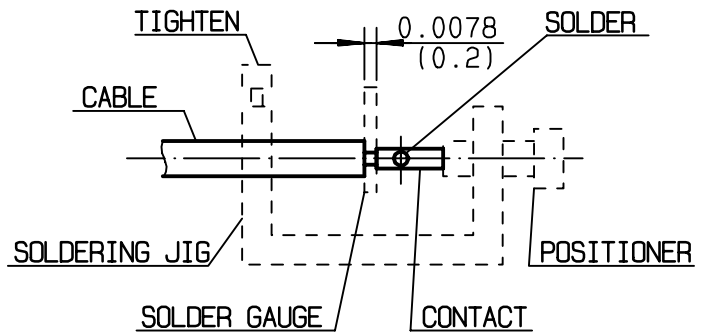
We recommend a cable thermal preconditioning before assembling

- Strip the dielectric of the cable .
Stripping tool cable : R282.053.000
Trimmer : R282.067.000
Clean the cable .
-

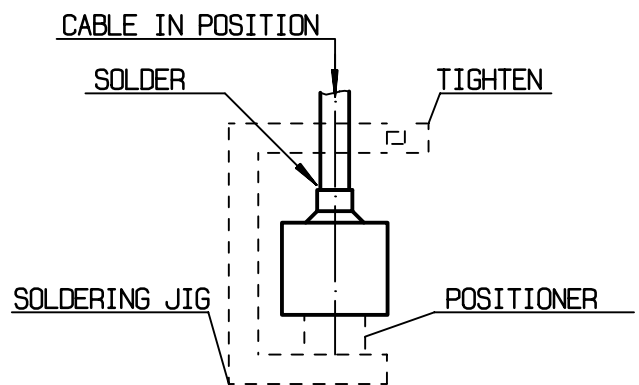


Stripping	a	b	c	d	e
inch	0.125 0	0	0	0	0
mm	3.17				

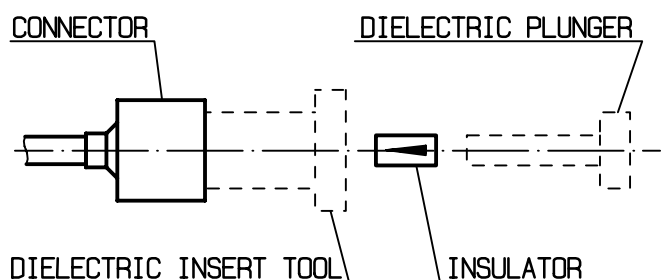
- Screw the positioner R282.744.220 onto the soldering jig R282.740.000
Slide contact into positioner .
Insert solder gauge R282.862.060 (62) between contact and cable .
Tighten and solder the contact .



- After cooling remove cable assembly from the jig .
Screw positioner R282.744.011 (86) into the connector .
Slide cable into the connector until it bottoms againsts positioner R282.744.011 .
Tighten .
Put 3 rings of solder around the cable and solder .



- After cooling remove cable assembly from the jig .
Screw positioner cut R282.914.010
Cut the dielectric flush to clamp braid sleeve with tool R282.915.010.
Screw female dielectric insert tool onto connector and insert insulator with the dielectric plunger R282.730.043



TRIQUES