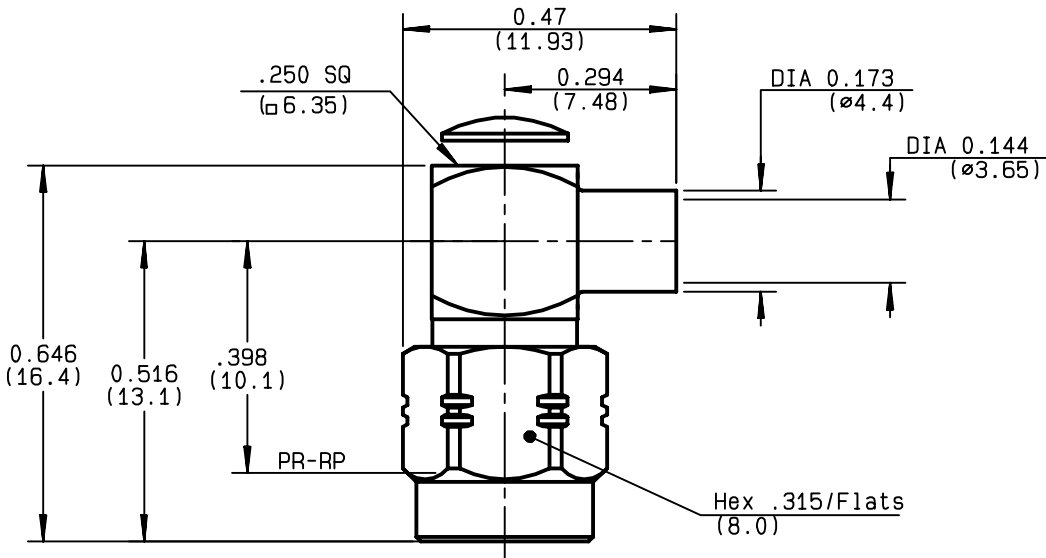


**RIGHT ANGLE PLUG SOLDER TYPE
CABLE .141**

R124.154.001
SERIES SMA-COM



NOMINAL IMPEDANCE	50 Ω	CABLES : KS 2
FREQUENCY RANGE	0-12.4 GHz	RG 402
TEMPERATURE RATING	-65/+105 °C	
V.S.W.R	1.10 + .01 x F(GHz)Maxi	
RF INSERTION LOSS	0.05 √F(GHz) dB Maxi	
VOLTAGE RATING	500 Veff Maxi	
DIELECTRIC WITHSTANDING VOLTAGE	1000 Veff Mini	
INSULATION RESISTANCE	5000 MΩMini	OTHERS CHARACTERISTICS
HERMETIC SEAL	NA Atm.cm ³ /s	CABLE RETENTION 270 N Mini
LEAKAGE (pressurized only)	NA	CENTER CONTACT RETENTION
MECHANICAL DURABILITY	100 Cycles	Axial force - mating end 27 N Mini
WEIGHT	4.1 gr	Axial force - opposite end 27 N Mini
SPECIFICATION		Torque NA cm.N Mini
		RECOMMENDED TORQUES
		Mating 60 cm.N
		Panel nut NA cm.N
		Clamp nut NA cm.N

CONNECTOR PARTS	MATERIALS	FINISH	(all values are given in micrometers)
BODY	BRASS	BBR 2	
OUTER CONTACT			
CENTER CONTACT	BRASS	GOLD 1.3 OVER COPPER 2.5	
INSULATOR	PTFE	-	
GASKET	SILICONE RUBBER	-	
OTHERS PIECES	BRASS	BBR 2	

ISSUE	CREATION DATE	FILE PART-NUMBER
9847A00	11/06/1996	96-1200-063



TRIQUES

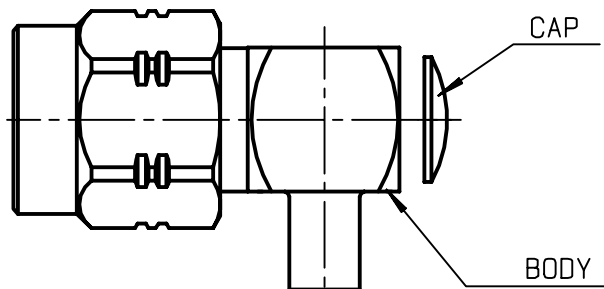
The information given here is subject to change without notice.
Design changes may be in order to improve the product .

Connect to the future



R124.154.001

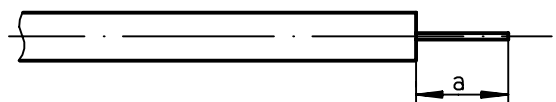
ISSUE 9847A00 SERIES SMA-COM



We recommend a cable thermal preconditionning before assembly.

①

Strip the cable .
Stripping tool R 282.053.000
Positioner R 282.067.000



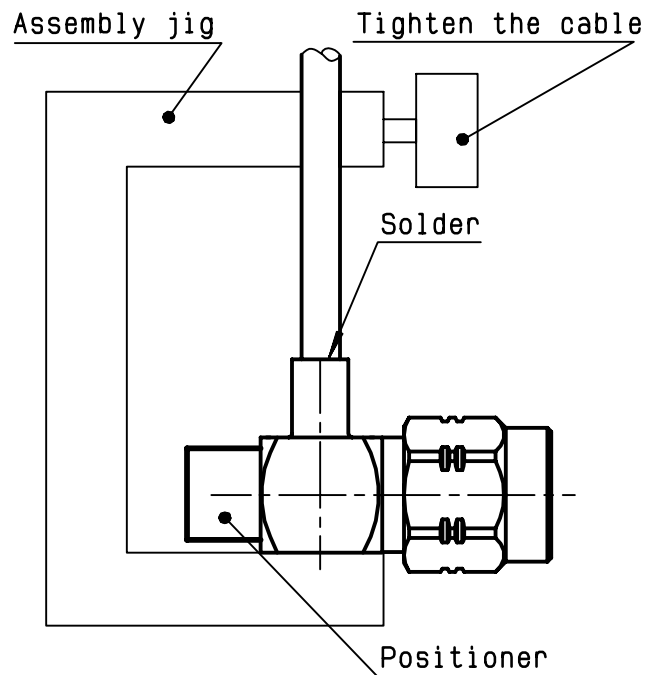
Stripping	a	b	c	d	e
inch	0.125 0	0	0	0	0
mm	3.17				

②

2-1 Introduce the cable into the connector body until it stops. Place the sub assembly into the assembly jig R 282.740.000 (or equivalent) with positioner R 282.744.201 and tighten it.

2-2 Solder the body onto the cable.

2-3 Let the assembly cool down before removing it from the jig .



③

3-1 Solder inner conductor.
3-2 Put the cap in its place.
3-3 Press cap flush or slightly below surface of body assembly.

