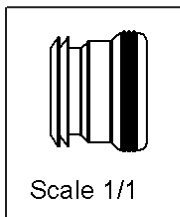
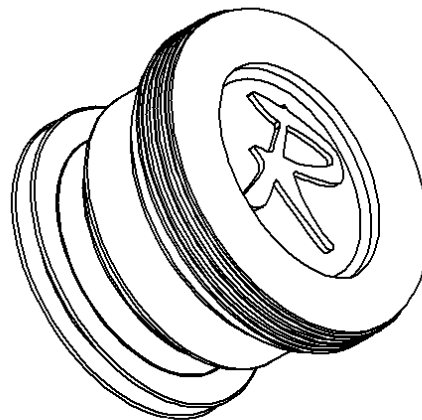
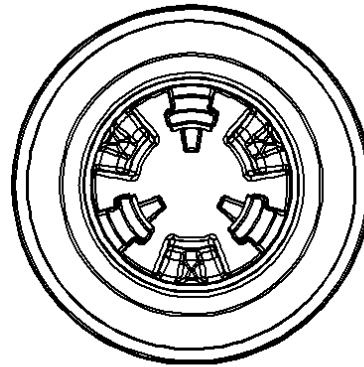
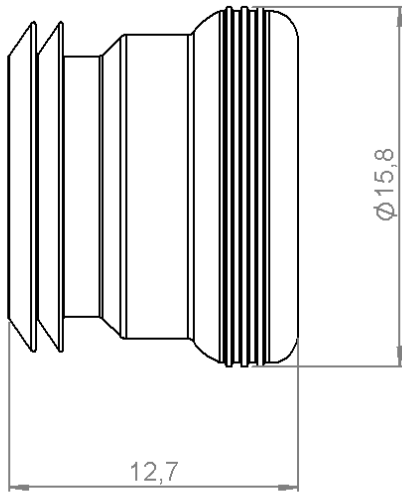


PROTECTIVE CAP
PACKAGING 2500

R123.835.009

Series : QMA



All dimensions are in mm.



COMPONENTS	MATERIALS	PLATING (µm)
BODY	COMPOSITE	-
CENTER CONTACT	-	-
OUTER CONTACT	-	-
INSULATOR	-	-
GASKET	-	-
OTHERS PARTS	-	-
-	-	-
-	-	-

Issue : 1305 B

In the effort to improve our products, we reserve the right to make changes judged to be necessary.

PROTECTIVE CAP

R123.835.009

PACKAGING 2500

Series : QMA

PACKAGING

SPECIFICATION

Standard	Unit	Other
5x500	'W' option	Contact us

ELECTRICAL CHARACTERISTICS

ENVIRONMENTAL

Impedance	NA	Ω
Frequency	NA	GHz
VSWR	NA + 0,0000	x F(GHz) Maxi
Insertion loss	NA	\sqrt{F} (GHz) dB Maxi
RF leakage	NA - (F(GHz)) dB Maxi
Voltage rating	NA	Veff Maxi
Dielectric withstanding voltage	NA	Veff mini
Insulation resistance	NA	M Ω mini

Operating temperature	-40/+85	$^{\circ}$ C
Hermetic seal	NA	Atm.cm3/s
Panel leakage	NA	

OTHER CHARACTERISTICS

Assembly instruction

Others :
 WATERPROOF LEVEL : IP67
 Extraction : 10N mini
 Ageing test : 2000H at 85 $^{\circ}$ C / UL94-V0

MECHANICAL CHARACTERISTICS

Center contact retention		
Axial force – Mating end	NA	N mini
Axial force – Opposite end	NA	N mini
Torque	NA	N.cm mini
Recommended torque		
Mating	NA	N.cm
Panel nut	NA	N.cm
Mating life	50	Cycles mini
Weight	1,7600	g

WARNING: "Do not mate the sealing cap with other connectors than QMA female jack.
 Mate the sealing cap in the connector axis and press firmly the cap up the locking bump"

Issue : 1305 B

In the effort to improve our products, we reserve the right to make changes judged to be necessary.

