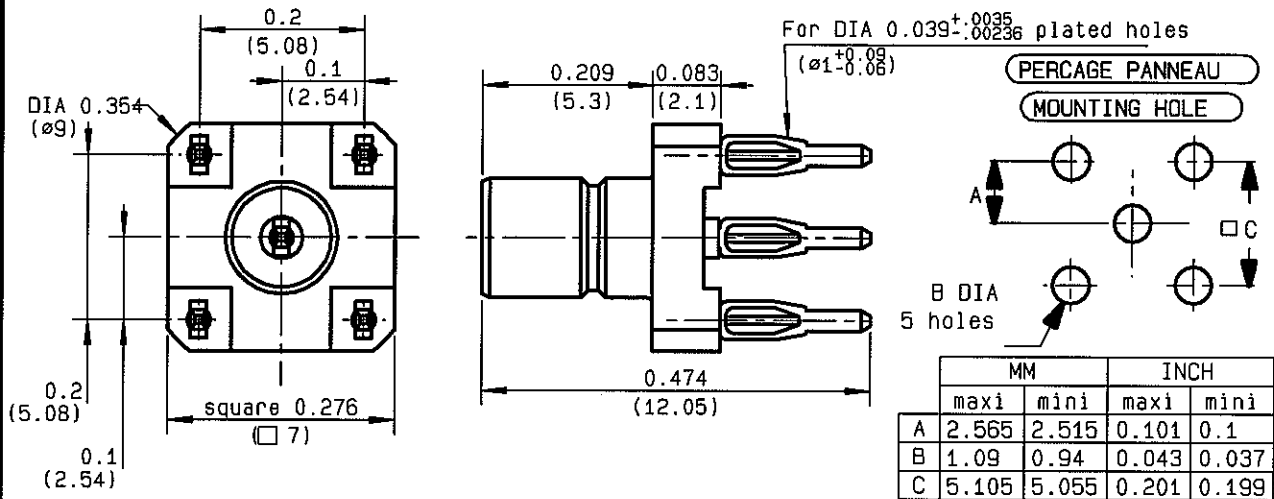


**STRAIGHT PLUG RECEPTACLE FOR PCB  
PRESS FIT LEGS**

**R114.416.000**  
**SERIES SMB**



NOMINAL IMPEDANCE	<b>50</b> Ω
FREQUENCY RANGE	<b>0-4</b> GHz
TEMPERATURE RATING	<b>-65/+165</b> °C
V.S.W.R	<b>1.3</b> + x F(GHz)Maxi
RF INSERTION LOSS	<b>0.1</b> √F(GHz) dB Maxi
VOLTAGE RATING	<b>500</b> Veff Maxi
DIELECTRIC WITHSTANDING VOLTAGE	<b>1000</b> Veff Mini
INSULATION RESISTANCE	<b>1000</b> MΩMini
HERMETIC SEAL	<b>NA</b> Atm.cm <sup>3</sup> /s
LEAKAGE (pressurized only)	<b>NA</b>
MECHANICAL DURABILITY	<b>500</b> Cycles
WEIGHT	<b>.92</b> gr
SPECIFICATION	

CABLES :	
OTHERS CHARACTERISTICS	
CABLE RETENTION	<b>NA</b> N Mini
CENTER CONTACT RETENTION	
Axial force - mating end	<b>10</b> N Mini
Axial force - opposite end	<b>10</b> N Mini
Torque	<b>NA</b> cm.N Mini
RECOMMENDED TORQUES	
Mating	<b>NA</b> cm.N
Panel nut	<b>NA</b> cm.N
Clamp nut	<b>NA</b> cm.N

CONNECTOR PARTS	MATERIALS	FINISH	(all values are given in micrometers)
BODY	BRASS	GOLD 0.2 OVER NICKEL 2	
OUTER CONTACT			
CENTER CONTACT	BRASS	GOLD 0.5 OVER NICKEL 2	
INSULATOR	PTFE	-	
GASKET		-	
OTHERS PIECES	PHOSPHOR BRONZE	TIN 3 OVER NICKEL 1-2	

ISSUE  
**0540B**

CREATION DATE  
**17/12/1996**

FILE PART-NUMBER  
**95-0132-018**



**RADIALL**®

PERRIN

The information given here is subject to change without notice.  
Design changes may be in order to improve the product.

*Connect to the future*

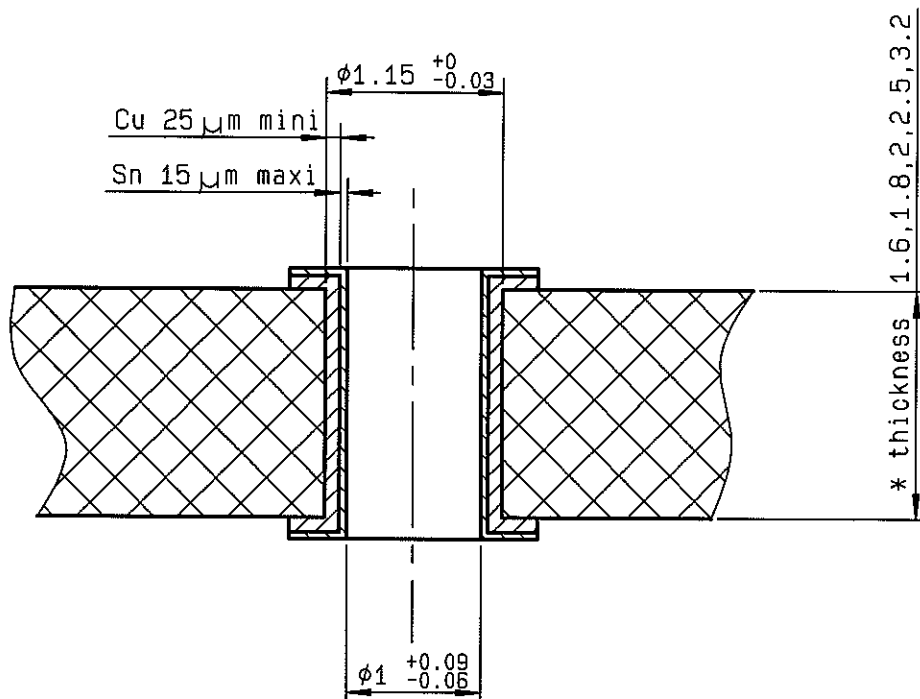


**R114.416.000**

ISSUE 0540B

SERIES SMB

PC BOARD MATERIAL	GLASS FIBRE EPOXYD NEMA:G10,G11,FR4,FR5 DIN 40802 : EP-GC 01 , EP-GC 02
THICKNESS	1.6 mm *
HOLE	FOR 1mm COMPLIANT PIN
BORE-HOLE	$\phi 1.15 \text{ } 0/-0.03$
COPPER	$> 25 \mu\text{m}$
TIN	$< 15 \mu\text{m}$
FINAL DIAMETER	$\phi 1 \text{ } +0.09/-0.06$



PERRIN



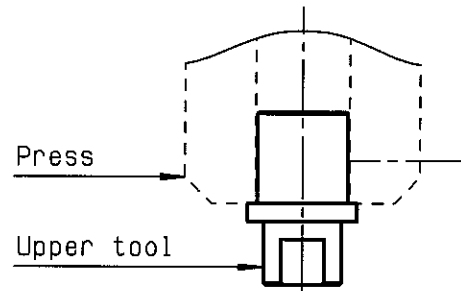
**R114.416.000**

ISSUE 0540B

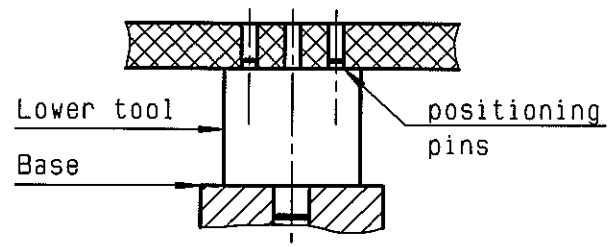
SERIES  
SMB

MOUNTING INSTRUCTIONS ON THE PCB  
STRAIGHT CONNECTORS WITH PRESS-FIT TERMINATION

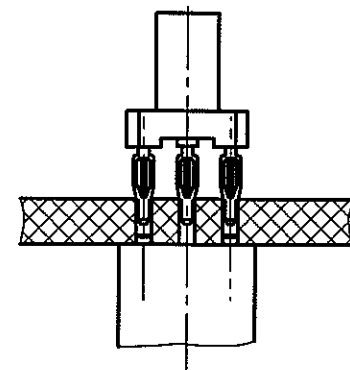
① Slide the upper tool (R282.878.151) into the machine (press) .  
-  
-  
-



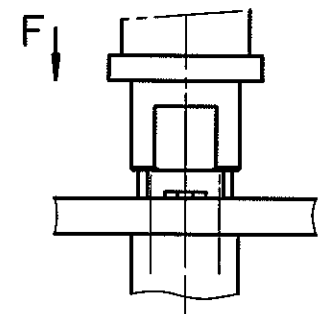
② Slide the lower tool (R282.878.523) into the base and place correctly the PCB on this tool .(positioning pins)  
-  
-  
-



③ Place correctly the straight connector with press-fit termination on the PCB and introduce the press-fit extremity in the holes of the PCB .  
-  
-  
-



④ Push on the top (about 500 N) until total insertion .(in direction F) (Push connector body until it bottoms against PCB) .  
Remove the connector and the PCB assembly .



PERRIN



**R114.416.000**

ISSUE 0540B

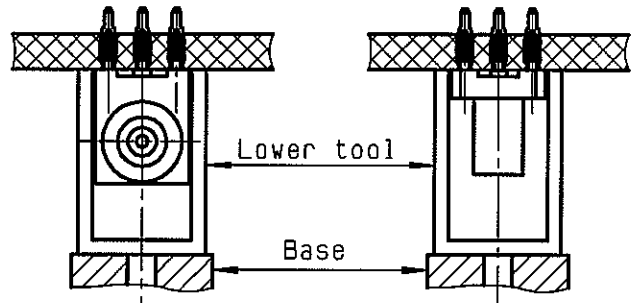
SERIES SMB

REPLACEMENT INSTRUCTIONS ON THE PCB  
STRAIGHT AND RIGHT ANGLE CONNECTORS WITH PRESS-FIT TERMINATION

①

Place correctly the PCB and the connector on lower tool (R282.878.533)

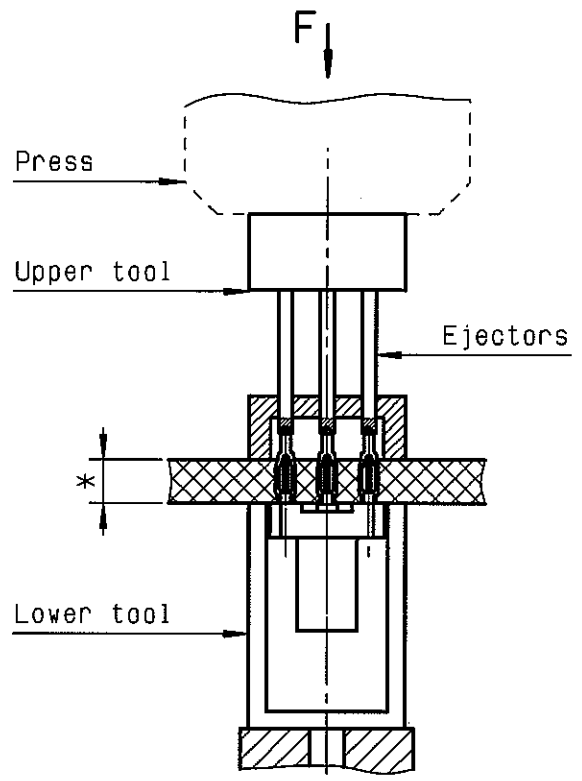
- 
- 
- 



②

Place the upper tool (R282.878.513) at the back of the connector and place correctly the ejectors :

- on Press-fit pins (if PCB thickness < 4.5mm)
- in the holes of the PCB (if PCB thickness > 4.5mm)
- 



③

Press the back of the upper tool to remove the connector ( about 500N) into the connector slide down onto lower tool .

- 
- 
- 

④

**CAUTION !**  
It's impossible to use a COAXIPRESS a twice .  
A plated hole of the PCB can't be used over 3 times .

- 
- \* panel thickness: 1.6 to 7 mm