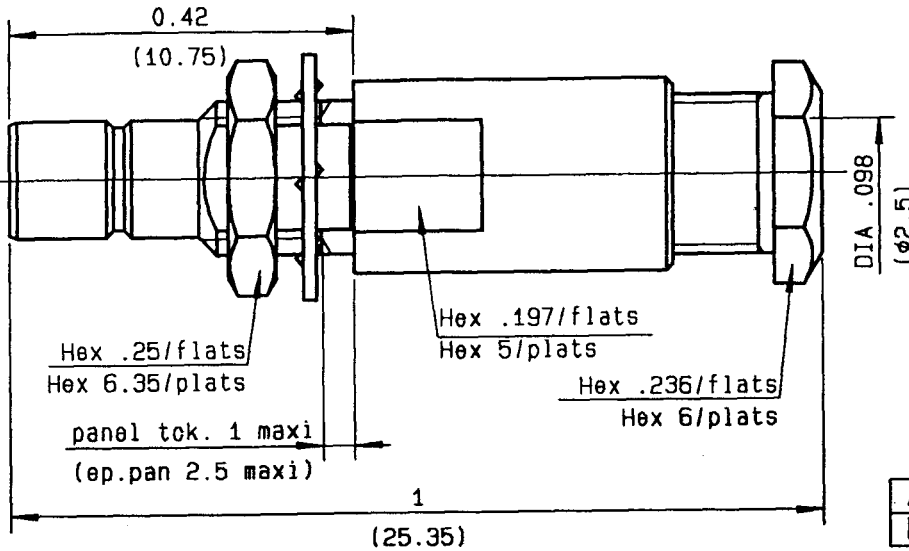


**STRAIGHT BULKHEAD JACK-CLAMP TYPE
CABLE 2.2/50 DOUBLE BRAIDED**

R114.304.420
SERIES SMB



PERCAGE PANNEAU
MOUNTING HOLE

	MM		INCH	
	maxi	mini	maxi	mini
A	5	4.9	0.197	0.19
B	4.58	4.46	0.18	0.176

NOMINAL IMPEDANCE	50	Ω
FREQUENCY RANGE	0-4	GHz
TEMPERATURE RATING	-65/+165	°C
V.S.W.R	TBD +	x F(GHz)Maxi
RF INSERTION LOSS	TBD	√F(GHz) dB Maxi
VOLTAGE RATING	335	Veff Maxi
DIELECTRIC WITHSTANDING VOLTAGE	1000	Veff Mini
INSULATION RESISTANCE	1000	MΩMini
HERMETIC SEAL	NA	Atm.cm ³ /s
LEAKAGE (pressurized only)	NA	MPa
MECHANICAL DURABILITY		Cycles
WEIGHT		gr
SPECIFICATION		

CABLES : TS 2619

OTHERS CHARACTERISTICS

	R-A-S
CABLE RETENTION	TBD N Mini
CENTER CONTACT RETENTION	
Axial force - mating end	10 N Mini
Axial force - opposite end	10 N Mini
Torque	NA cm.N Mini
RECOMMENDED TORQUES	
Mating	NA cm.N
Panel nut	60 cm.N
Clamp nut	40 cm.N

CONNECTOR PARTS	MATERIALS	FINISH
BODY	BRASS	GOLD 0.2 OVER NICKEL 2
OUTER CONTACT		
CENTER CONTACT	BRASS	GOLD 1.3 OVER NICKEL 2
INSULATOR	PTFE	-
BASKET		-
OTHERS PIECES		-

(all values are given in micrometers)

TRIP

ISSUE	CREATION DATE	FILE PART-NUMBER
9621D	19-MAY-92	92-0019-067



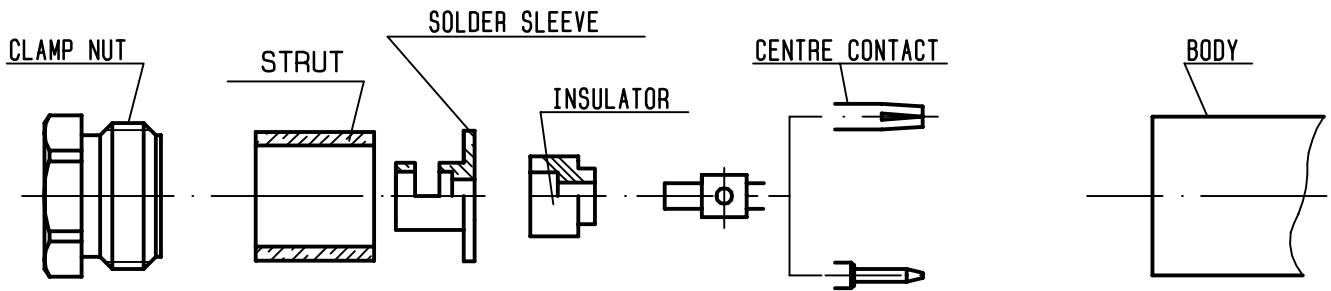
The information given here is subject to change without notice.
Design changes may be in order to improve the product.

Connect to the future



R114.304.420

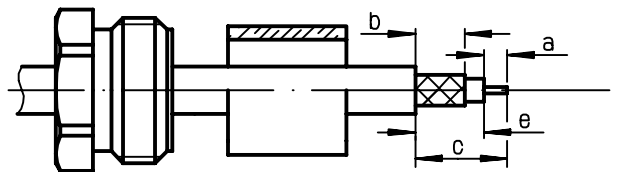
ISSUE 9850D00 SERIES SMB



1

Slide the clamp nut ,the strut onto the cable

Strip the cable .
Dip tinned centre conductor of cable .



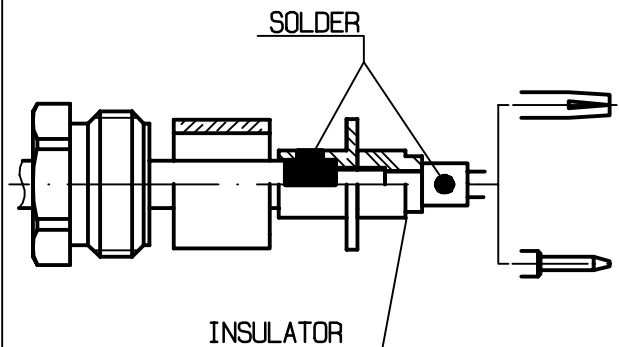
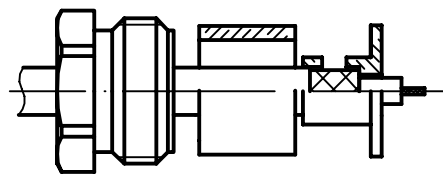
Stripping	a	b	c	d	e
inch	0.059	0.118	0.307	0	0.248
mm	1.5	3	7.8		6.3

2

Solder the solder sleeve onto the braid .
Slide the insulator until it bottoms against the solder sleeve .

-
Solder the centre contact until it bottoms against insulator .

-
-
-
-
-
-
-
-
-
-
-



3

Screw sub-assembly into the connector body .
(recommended coupling torque 3.53 in.lb)
Ref. wrench .236/flats : R282 318 000
Ref. wrench .250/flats : R282 319 010

