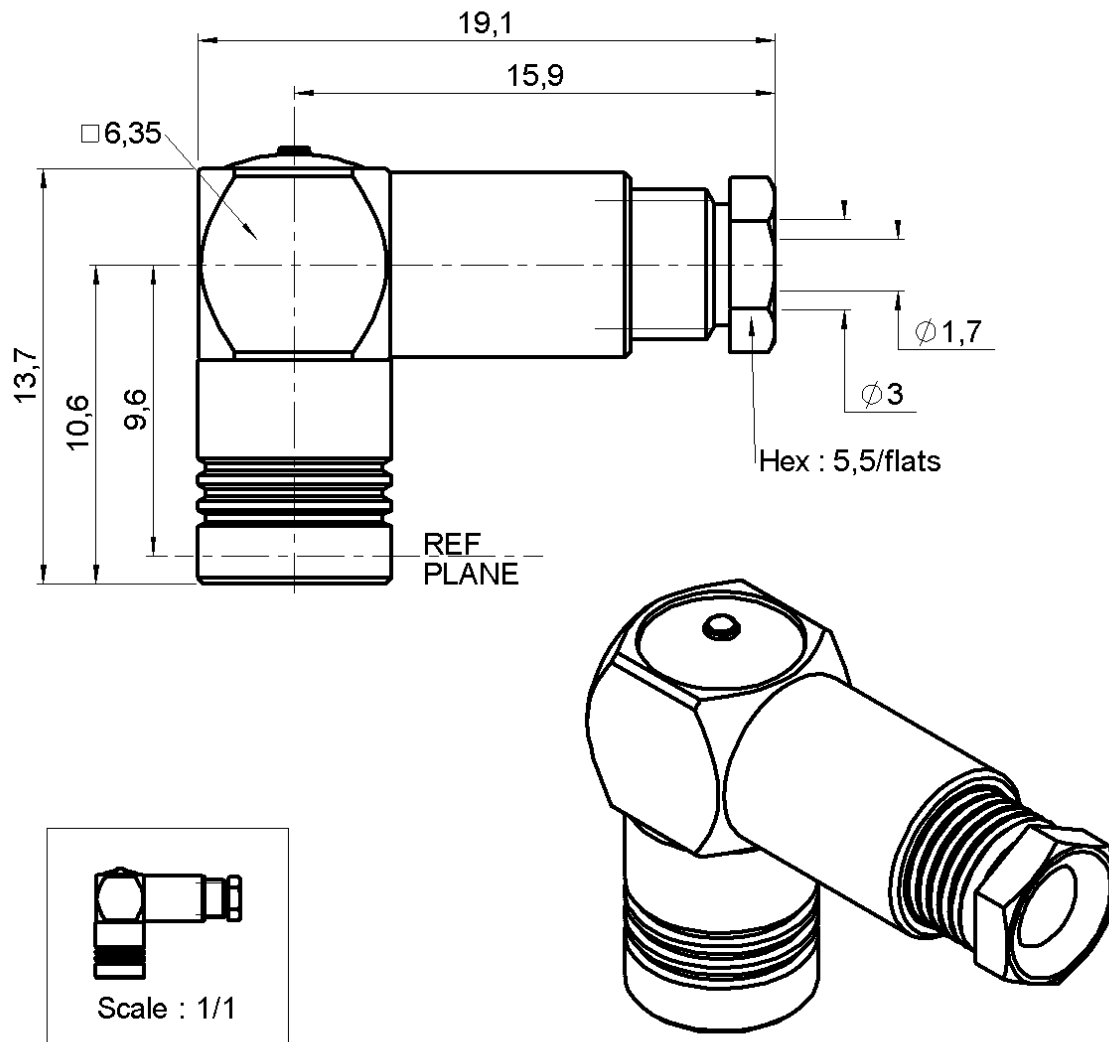


**RIGHT ANGLE PLUG CLAMP TYPE**

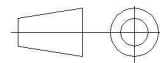
**R114.165.000**

**CABLE 2.6/50+75 S**

Series : **SMB**



All dimensions are in mm.



COMPONENTS	MATERIALS	PLATINGS (µm)
BODY	BRASS	GOLD 0.2 OVER NICKEL 2
CENTER CONTACT	BERYLLIUM COPPER	GOLD 1.3 OVER NICKEL 2
OUTER CONTACT	BERYLLIUM COPPER	GOLD 0.5 OVER NICKEL 2
INSULATOR	PTFE	
GASKET	-	
OTHERS PARTS	BRASS	GOLD 0.2 OVER NICKEL 2
-	-	-
-	-	-

Issue : 0050 Q

In the effort to improve our products, we reserve the right to make changes judged to be necessary.



**RADIALL**®

**RIGHT ANGLE PLUG CLAMP TYPE**

**R114.165.000**

**CABLE 2.6/50+75 S**

Series : **SMB**

**PACKAGING**

Standard	Unit	Other
<b>100</b>	<b>'W' option</b>	<b>Contact us</b>

**SPECIFICATION**

**CABLE ASSEMBLY**

**ELECTRICAL CHARACTERISTICS**

Impedance		<b>50</b> Ω
Frequency		<b>0-4</b> GHz
VSWR	<b>1.35</b> +	<b>0.040</b> x F(GHz) Maxi
Insertion loss		<b>0.50</b> √F(GHz) dB Maxi
RF leakage	- (	<b>57</b> - F(GHz) dB mini
Voltage rating		<b>335</b> Veff Maxi
Dielectric withstanding voltage		<b>1000</b> Veff mini
Insulation resistance		<b>1000</b> MΩ mini

Stripping	a	b	c	d	e	f
mm	1.50	0.00	4.00	5.00	2.00	0.00

Assembly instruction :

Recommended cable(s)

KX 22A  
RG 179  
RG 188  
RG 187  
RG 316

**MECHANICAL CHARACTERISTICS**

Center contact retention		
Axial force – Mating end		<b>10</b> N mini
Axial force – Opposite end		<b>10</b> N mini
Torque		<b>NA</b> N.cm mini

Cable retention

- pull off **110** N mini  
- torque **NA** N.cm

**TOOLING**

Part Number	Description	Hexagon
.	.	.

Recommended torque

Mating	<b>NA</b> N.cm
Panel nut	<b>NA</b> N.cm
Clamp nut	<b>40</b> N.cm
A/F clamp nut	<b>5.000</b> mm

Mating life	<b>500</b> Cycles mini
Weight	<b>4.800</b> g

**OTHERS CHARACTERISTICS**

**ENVIRONMENTAL**

Operating temperature	<b>-65/+165</b> °C
Hermetic seal	<b>NA</b> Atm.cm3/s
Panel leakage	<b>NA</b>

Issue : **0050 Q**

In the effort to improve our products, we reserve the right to make changes judged to be necessary.



**RADIALL**®

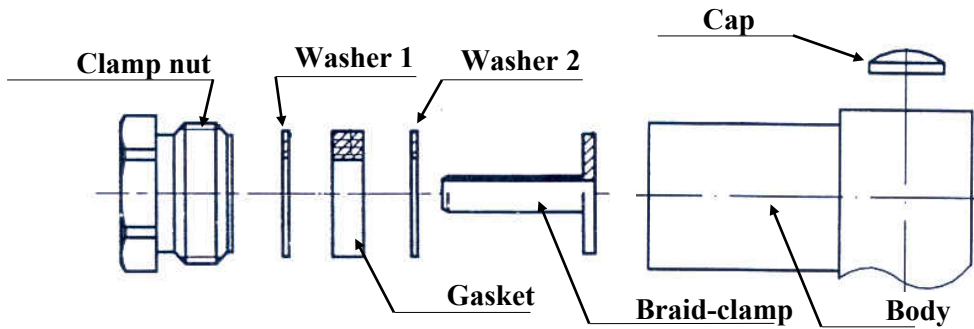
**RIGHT ANGLE PLUG CLAMP TYPE**

**R114.165.000**

**CABLE 2.6/50+75 S**

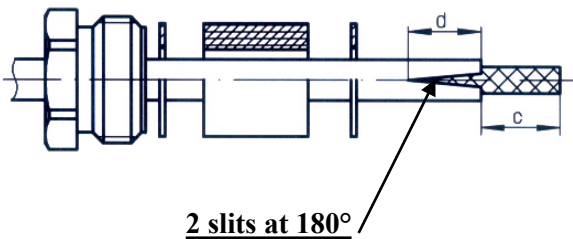
Series : **SMB**

**COMPONENTS**



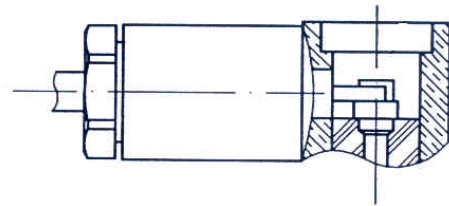
**1**

Slide the back nut, the washer 1, the gasket, the washer 2 onto the cable.  
Strip the cable.  
Cut 2 slits in the jacket if necessary.



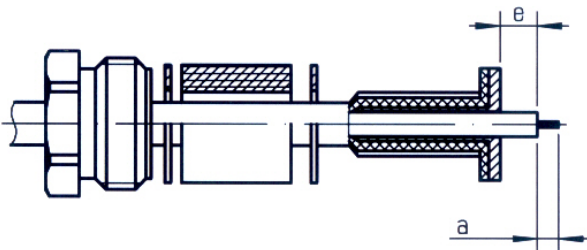
**3**

Screw sub-assembly into the connector body with the adapted wrench.  
Recommended coupling torque (see connector TDS).  
Solder the inner conductor.



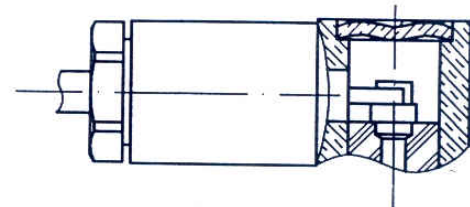
**2**

Mount the braid-clamp  
Trim braid to  $\varnothing$  of braid-clamp  
Strip off the dielectric



**4**

Place the cap into the body.  
Press on the cap flush or slightly below the surface of the body assembly.



Issue : 0050 Q

In the effort to improve our products, we reserve the right to make changes judged to be necessary.



**RADIALL**®