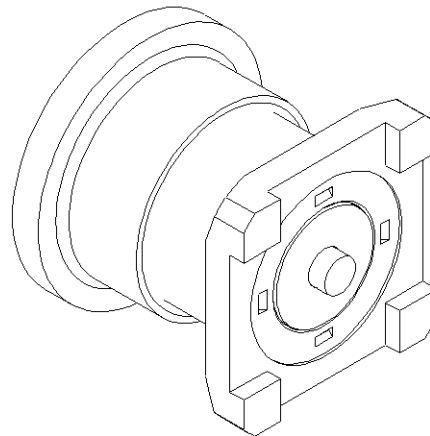
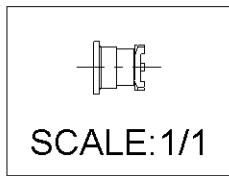
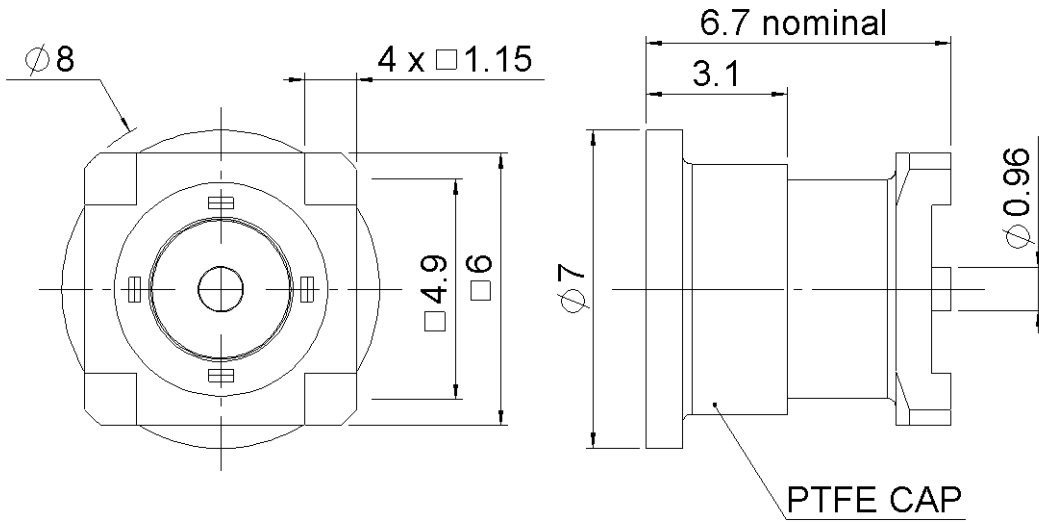
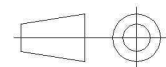


| | | | |
|----------|-------------|------------|------------------------|
| PAGE 1/5 | ISSUE 1331A | SERIES MCX | PART NUMBER R113424840 |
|----------|-------------|------------|------------------------|



All dimensions are in mm.



| COMPONENTS | MATERIALS | PLATING (μm) |
|----------------|-------------------------|-------------------------|
| Body | BRASS | GOLD OVER NICKEL |
| Center contact | BERYLLIUM COPPER | GOLD OVER NICKEL |
| Outer contact | | |
| Insulator | PTFE | |
| Gasket | | |
| Others parts | PTFE | |
| - | - | - |
| - | - | - |

| | | | |
|----------|-------------|------------|------------------------|
| PAGE 2/5 | ISSUE 1331A | SERIES MCX | PART NUMBER R113424840 |
|----------|-------------|------------|------------------------|

PACKAGING

| Standard | Unit | Other |
|----------|------------|------------|
| 500 | Contact us | Contact us |

ELECTRICAL CHARACTERISTICS

| | | | |
|---------------------------------|-------------|-------------|-----------------------------|
| Impedance | | 50 | Ω |
| Frequency | | 0-6 | GHz |
| VSWR | 1.05 | + | 0.0500 x F(GHz) Maxi |
| Insertion loss | | 0.03 | √F(GHz) dB Maxi |
| RF leakage | - (| NA | - F(GHz)) dB Maxi |
| Voltage rating | | 335 | Veff Maxi |
| Dielectric withstanding voltage | | 1000 | Veff mini |
| Insulation resistance | | 1000 | MΩ mini |

ENVIRONMENTAL

| | | |
|-----------------------|-----------------|-----------|
| Operating temperature | -55/+155 | °C |
| Hermetic seal | NA | Atm.cm3/s |
| Panel leakage | NA | |

MECHANICAL CHARACTERISTICS

| | | | |
|----------------------------|--|---------------|-------------|
| Center contact retention | | | |
| Axial force – Mating End | | 10 | N mini |
| Axial force – Opposite end | | 10 | N mini |
| Torque | | NA | N.cm mini |
| Recommended torque | | | |
| Mating | | NA | N.cm |
| Panel nut | | NA | N.cm |
| Mating life | | 500 | Cycles mini |
| Weight | | 0.7000 | g |

SPECIFICATION

OTHER CHARACTERISTICS

Assembly instruction:**NA**

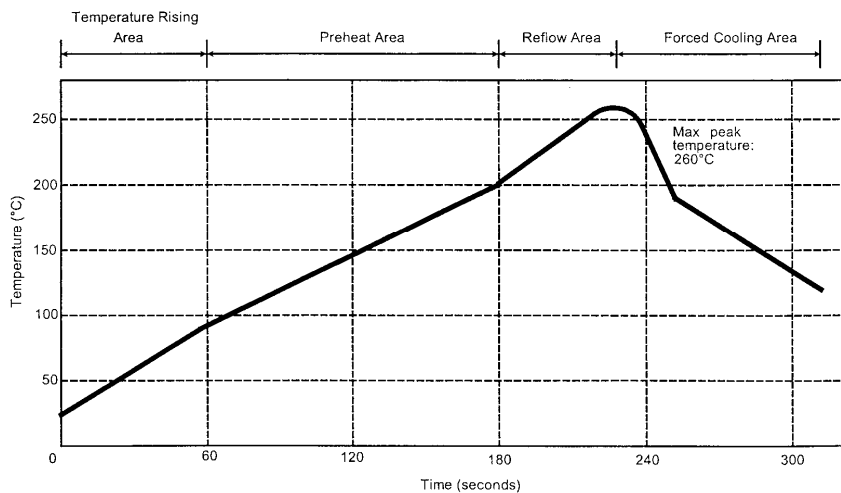
Others:

| | | | |
|----------|-------------|------------|------------------------|
| PAGE 3/5 | ISSUE 1331A | SERIES MCX | PART NUMBER R113424840 |
|----------|-------------|------------|------------------------|

SOLDER PROCEDURE

1. Deposit solder paste 'Sn Ag4 Cu0.5' on mounting zone by screen printing application. We recommend a low residue flux. We advise a thickness of 150 microns mini. (.006 inch mini). Verify that the edges of the zone are clean.
2. Placement of the receptacle on the mounting zone with an automatic machine of 'pick and place' type. A video camera is recommended for positioning of the component. Adhesive agents must not be used on the receptacle.
3. Soldering by infra-red reflow. Below please find the typical profile to use.
4. Cleaning of printed circuit boards.
5. Verification of solder joints and position of the component by visual inspection.

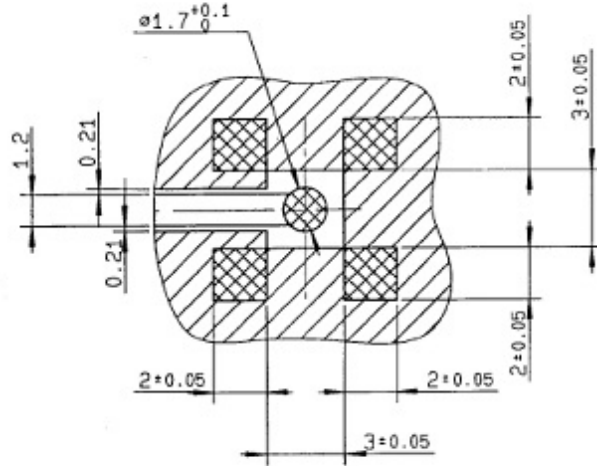
TEMPERATURE PROFILE



| Parameter | Value | Unit |
|----------------------------------|-----------|--------|
| Temperature rising Area | 1 - 4 | °C/sec |
| Max Peak Temperature | 260 | °C |
| Max dwell time @260°C | 10 | sec |
| Min dwell time @235°C | 20 | sec |
| Max dwell time @235°C | 60 | sec |
| Temperature drop in cooling Area | -1 to - 4 | °C/sec |
| Max dwell time above 100°C | 420 | sec |

| | | | |
|----------|-------------|------------|------------------------|
| PAGE 4/5 | ISSUE 1331A | SERIES MCX | PART NUMBER R113424840 |
|----------|-------------|------------|------------------------|

PCB



COPLANAR LINE

Pattern and signal are on the same side
 Thickness of PCB : .053 (1.6 mm)
 The material of PCB is the epoxy resin
 of glass fabrics bacs.(Er = 4.8)
 The solder resist should be printed
 except for the land pattern on the PCB.



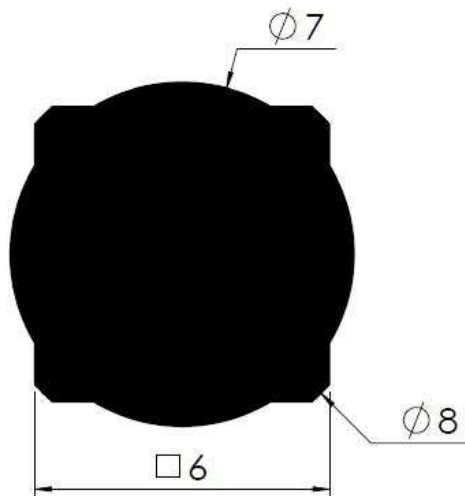
Pattern



Land for solder paste

NOTE: Due to the potential large variation of performance depending on PCB and line parameters, we recommend the user to process a RF analyze of the connector mounted on his PCB

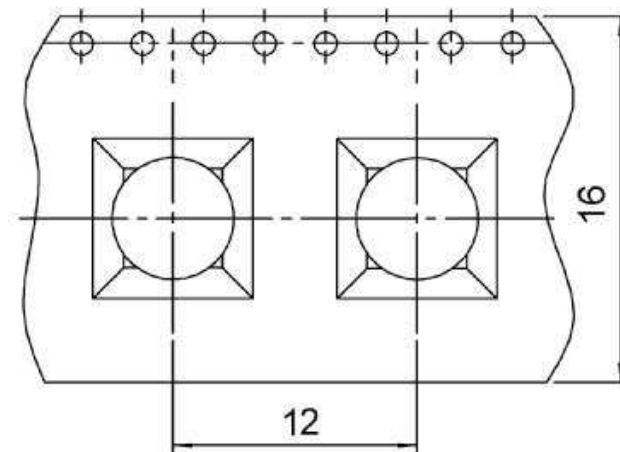
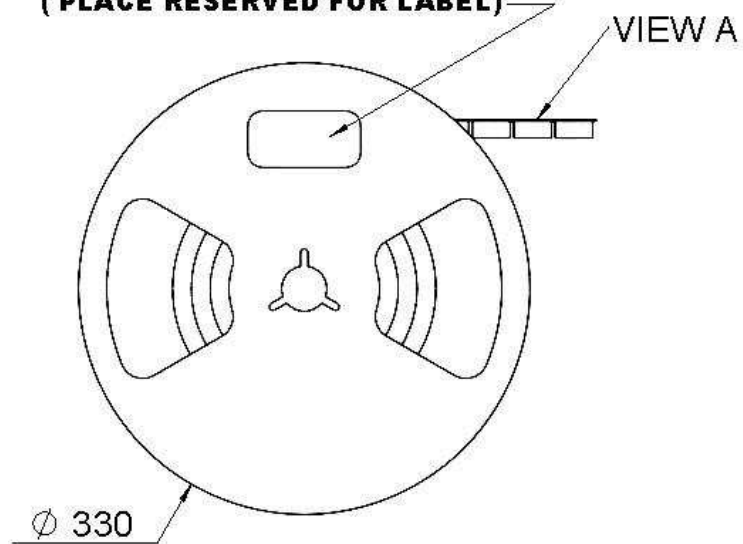
Shadow of receptacle for video camera



| | | | |
|----------|-------------|------------|------------------------|
| PAGE 5/5 | ISSUE 1331A | SERIES MCX | PART NUMBER R113424840 |
|----------|-------------|------------|------------------------|

PACKAGE

**EMPLACEMENT RESERVE POUR
L' ETIQUETTE
(PLACE RESERVED FOR LABEL)**



VIEW A