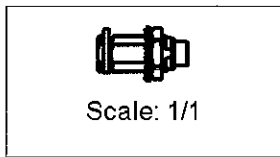
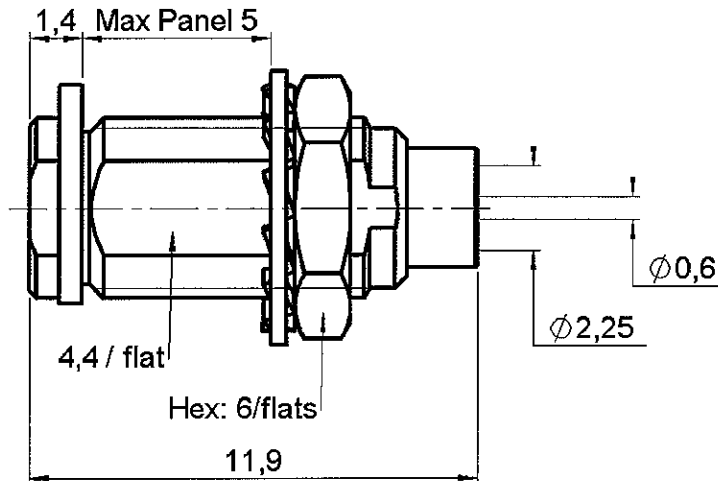


**STRAIGHT BULKHEAD JACK SOLDER TYPE**

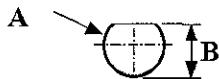
**R113.303.000**

**CABLE .085**

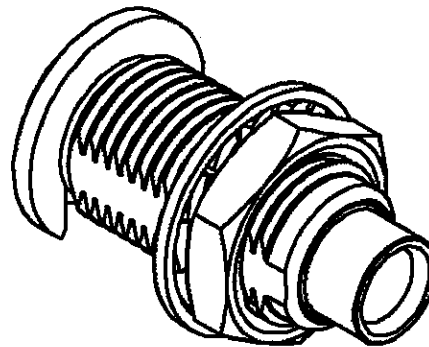
Series : MCX



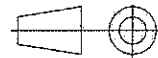
**PANEL CUT OUT**



mm		
	Maxi	mini
A	5	4.9
B	5.59	4.46



All dimensions are in mm.



COMPONENTS	MATERIALS	PLATINGS (µm)
BODY	BRASS	GOLD 0.2 OVER NICKEL 2
CENTER CONTACT	BERYLLIUM COPPER	GOLD 1.3 OVER NICKEL 2
OUTER CONTACT	-	-
INSULATOR	PTFE	-
GASKET	-	-
OTHERS PARTS	BRASS	GOLD 0.2 OVER NICKEL 2
-	-	-
-	-	-

Issue : 0450 E

In the effort to improve our products, we reserve the right to make changes judged to be necessary.



**STRAIGHT BULKHEAD JACK SOLDER TYPE**

**R113.303.000**

**CABLE .085**

Series : **MCX**

**PACKAGING**

**SPECIFICATION**

Standard	Unit	Other
1		Contact us

**CABLE ASSEMBLY**

**ELECTRICAL CHARACTERISTICS**

Stripping	a	b	c	d	e	f
mm	2.70	0.00	0.00	0.00	2.10	0.00

Impedance **50** Ω  
 Frequency **0-6** GHz  
 VSWR **1.10 + 0.040** x F(GHz) Maxi  
 Insertion loss **0.25** √F(GHz) dB Maxi  
 RF leakage **NA** - F(GHz) dB mini  
 Voltage rating **250** Veff Maxi  
 Dielectric withstanding voltage **750** Veff mini  
 Insulation resistance **1000** MΩ mini

Assembly instruction :

Recommended cable(s)  
 RG 405  
 KS 1

Cable retention

- pull off **155** N mini  
 - torque **NA** N.cm

**MECHANICAL CHARACTERISTICS**

**TOOLING**

Center contact retention  
 Axial force – Mating end **NA** N mini  
 Axial force – Opposite end **NA** N mini  
 Torque **NA** N.cm mini

Part Number	Description	Hexagon
R282.740.020	SOLDERING MOUNTING	

Recommended torque  
 Mating **NA** N.cm  
 Panel nut **60** N.cm  
 Clamp nut **NA** N.cm  
 A/F clamp nut **0.000** mm

**OTHERS CHARACTERISTICS**

Mating life **500** Cycles mini  
 Weight **0.000** g

**ENVIRONMENTAL**

Operating temperature **-55/+115** °C  
 Hermetic seal **NA** Atm.cm3/s  
 Panel leakage **NA**

Issue : 0450 E

In the effort to improve our products, we reserve the right to make changes judged to be necessary.



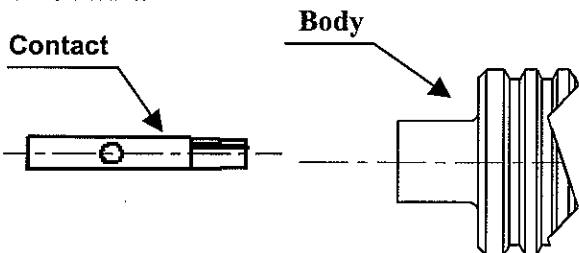
**STRAIGHT BULKHEAD JACK SOLDER TYPE**

**R113.303.000**

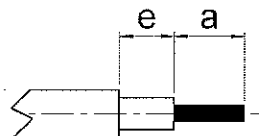
**CABLE .085**

Series : MCX

**COMPONENT**



**STRIPPING DIMENSIONS**



We recommend a thermal preconditioning cable.

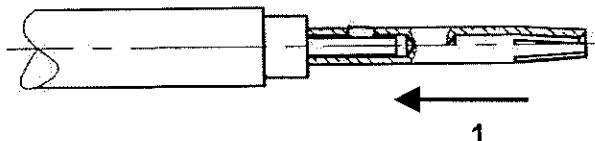
**1**

Cable stripping.



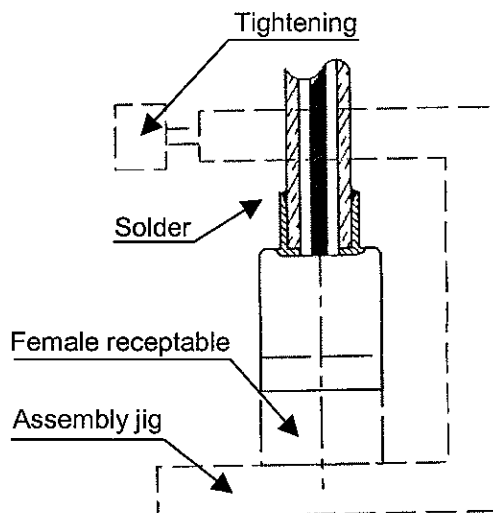
**2**

Tin centre contact solder pot.  
Solder centre contact on cable inner conductor.  
Clean solder.



**3**

Introduce cable into the connector body until contact with the body shoulder.  
Place the sub assembly into the assembly jig R282 740 020 (or equivalent).  
We advice to connect a female receptable to the connector prior to solder the body in order to respect right centre contact position.  
Tighten the sub assembly.  
Solder body on the cable.  
Let the assembly cool down before removing it from the jig.  
Clean solder.



Issue : 0450 E

In the effort to improve our products, we reserve the right to make changes judged to be necessary.

