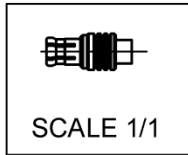
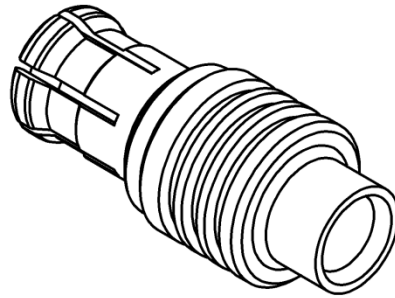
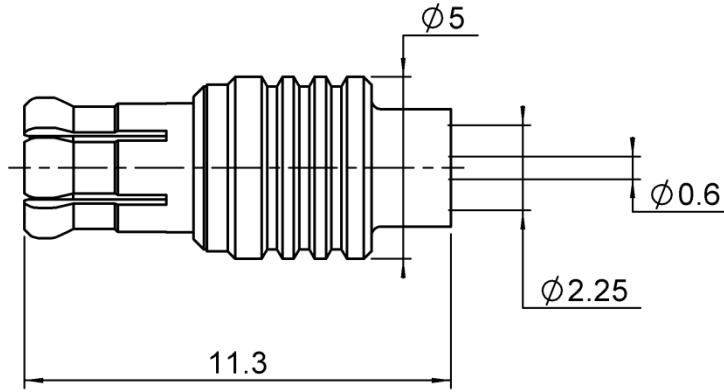


**STRAIGHT PLUG SOLDER TYPE**

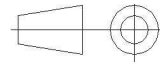
**R113.053.000**

**CABLE .085**

Series : MCX



All dimensions are in mm.



COMPONENTS	MATERIALS	PLATINGS (µm)
BODY	BRASS	GOLD 0.2 OVER NICKEL 2
CENTER CONTACT	BRASS	GOLD 1.3 OVER NICKEL 2
OUTER CONTACT	BERYLLIUM COPPER	GOLD 0.5 OVER NICKEL 2
INSULATOR	PTFE	
GASKET		
OTHERS PARTS		
-		-
-		-



Issue : 0925 - B

In the effort to improve our products, we reserve the right to make changes judged to be necessary.

NOT APPROVED



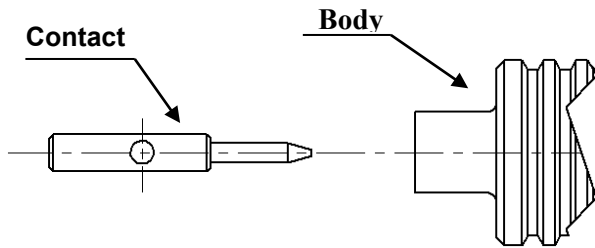
**STRAIGHT PLUG SOLDER TYPE**

**R113.053.000**

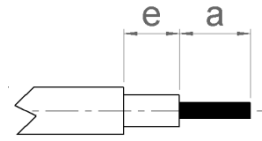
**CABLE .085**

Series : MCX

**COMPONENT**



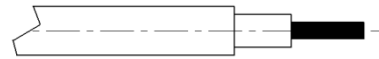
**STRIPPING DIMENSIONS**



We recommend a thermal preconditioning cable.

**1**

Cable stripping.



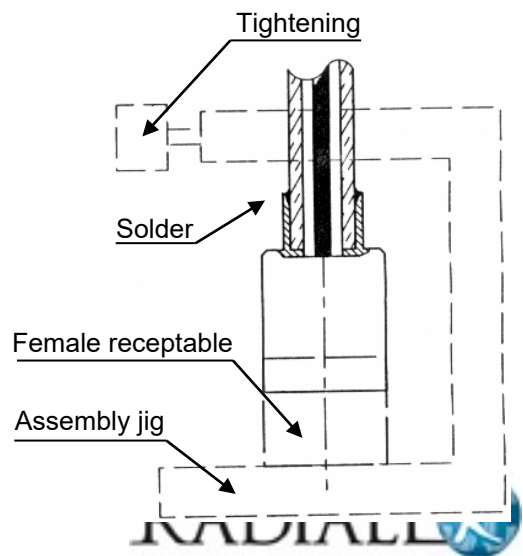
**2**

Tin centre contact solder pot.  
Solder centre contact on cable inner conductor.  
Clean solder.



**3**

Introduce cable into the connector body until contact with the body shoulder.  
Place the sub assembly into the assembly jig R282 740 020 (or equivalent).  
We advice to connect a female receptable to the connector prior to solder the body in order to respect right centre contact position.  
Tighten the sub assembly.  
Solder body on the cable.  
Let the assembly cool down before removing it from the jig.  
Clean solder.



Issue : 0925 - B

In the effort to improve our products, we reserve the right to make changes judged to be necessary.