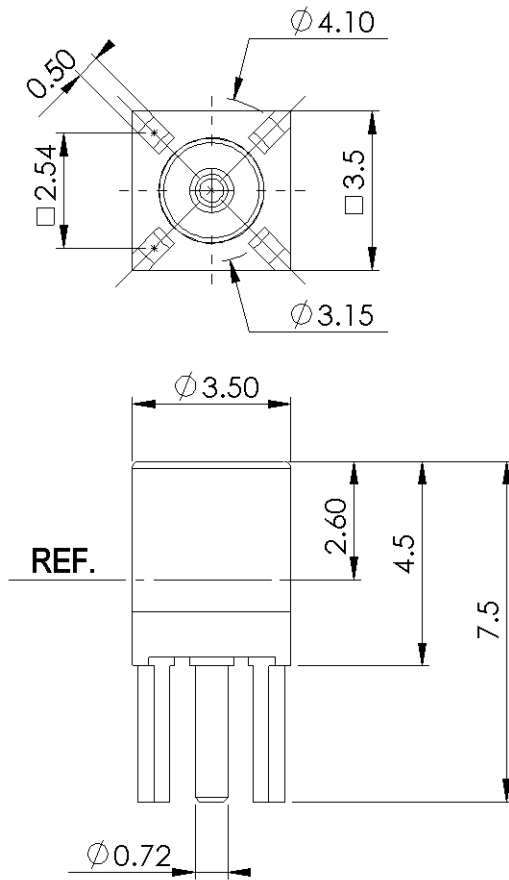


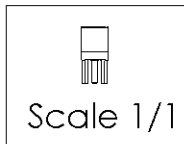
PAGE 1/2	ISSUE 30-06-15A	SERIES MMCX	PART NUMBER R110426107
----------	-----------------	-------------	------------------------



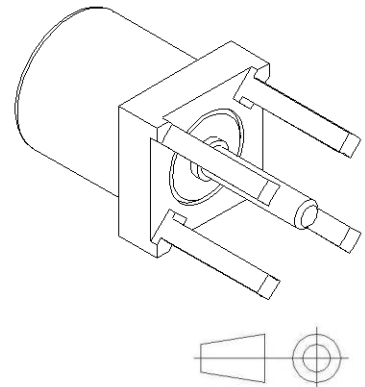
PANEL CUT OUT

Diagram showing the panel cut out dimensions A, B, and C. A note indicates 'B DIA 5 holes'.

	mm	
	Maxi	mini
A	1.29	1.25
B	0.85	0.75
C	2.56	2.52



All dimensions are in mm.



COMPONENTS	MATERIALS	PLATING (μm)
Body	NON MAGNETIC BRONZE	GOLD OVER COPPER
Center contact	BERYLLIUM COPPER	GOLD OVER COPPER
Outer contact	-	-
Insulator	PTFE	-
Gasket	-	-
Others parts	-	-
-	-	-
-	-	-

PAGE 2/2	ISSUE 30-06-15A	SERIES MMCX	PART NUMBER R110426107
----------	------------------------	--------------------	-------------------------------

PACKAGING

Standard	Unit	Other
100	Contact us	Contact us

ELECTRICAL CHARACTERISTICS

Impedance		50	Ω
Frequency		0-6	GHz
VSWR	NA	+ 0.0000	x F(GHz) Maxi
Insertion loss		NA	\sqrt{F} (GHz) dB Maxi
RF leakage	- (66	- F(GHz)) dB Maxi
Voltage rating		170	Veff Maxi
Dielectric withstanding voltage		250	Veff mini
Insulation resistance		1000	M Ω mini

ENVIRONMENTAL

Operating temperature	-55/+155	$^{\circ}\text{C}$
Hermetic seal	NA	Atm.cm3/s
Panel leakage	NA	

MECHANICAL CHARACTERISTICS

Center contact retention			
Axial force – Mating End		5	N mini
Axial force – Opposite end		5	N mini
Torque		NA	N.cm mini
Recommended torque			
Mating		NA	N.cm
Panel nut		NA	N.cm
Mating life		500	Cycles mini
Weight		0.0500	g

SPECIFICATION

OTHER CHARACTERISTICS

Assembly instruction:

Others:

Distorsion of the magnetic field
<0.5 ppm at 10mm at Bo=1.5 Tesla
Non magnetic component