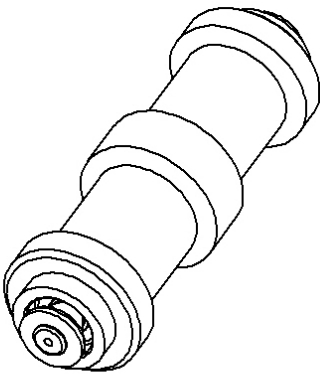
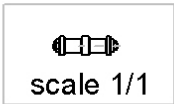
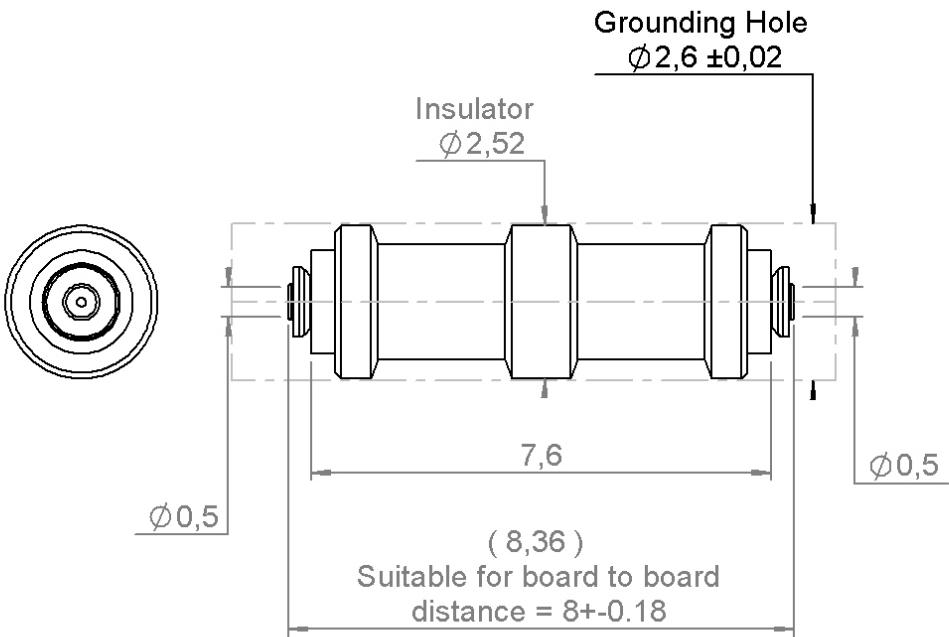
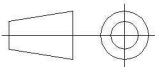


PAGE 1/3	ISSUE 25-03-24C	SERIES IMP SR	PART NUMBER R107825010
----------	--------------------	---------------	------------------------



All dimensions are in mm. Tolerances according ISO 2768 m-H



COMPONENTS	MATERIALS	PLATING (μm)
Body	BERYLLIUM COPPER - BRONZE	NPGR
Center contact		
Outer contact		
Insulator	PTFE	
Gasket		
Others parts		
-	-	-
-	-	-

PAGE 2/3

ISSUE
25-03-24C

SERIES **IMP SR**

PART NUMBER **R107825010**

PACKAGING

Standard	Unit	Other
100	Contact us	Contact us

ELECTRICAL CHARACTERISTICS

Impedance	50	Ω
Frequency	0-40	GHz
VSWR	* + 0,000	x F(GHz) Maxi
Insertion loss	-0.035 **	\sqrt{F} (GHz) dB Maxi
RF leakage	- (NA	- F(GHz) dB Maxi
Voltage rating	225	Veff Maxi
Dielectric withstanding voltage	500	Veff mini
Insulation resistance	1000	M Ω mini

ENVIRONMENTAL

Operating temperature	-55/+165	°C
Hermetic seal		Atm.cm3/s
Panel leakage		

MECHANICAL CHARACTERISTICS

Center contact retention		
Axial force – Mating End	0.25	N mini
Axial force – Opposite end	0.25	N mini
Torque		N.cm mini

Recommended torque	
Mating	N.cm
Panel nut	N.cm

Mating life	50	Cycles mini
Nominal Weight	0,080	g
(Add +15% for max weight)		

SPECIFICATION

OTHER CHARACTERISTICS

Assembly instruction:

See assembly instruction next page:

Compression force ~1.5N in nominal compression

Others:

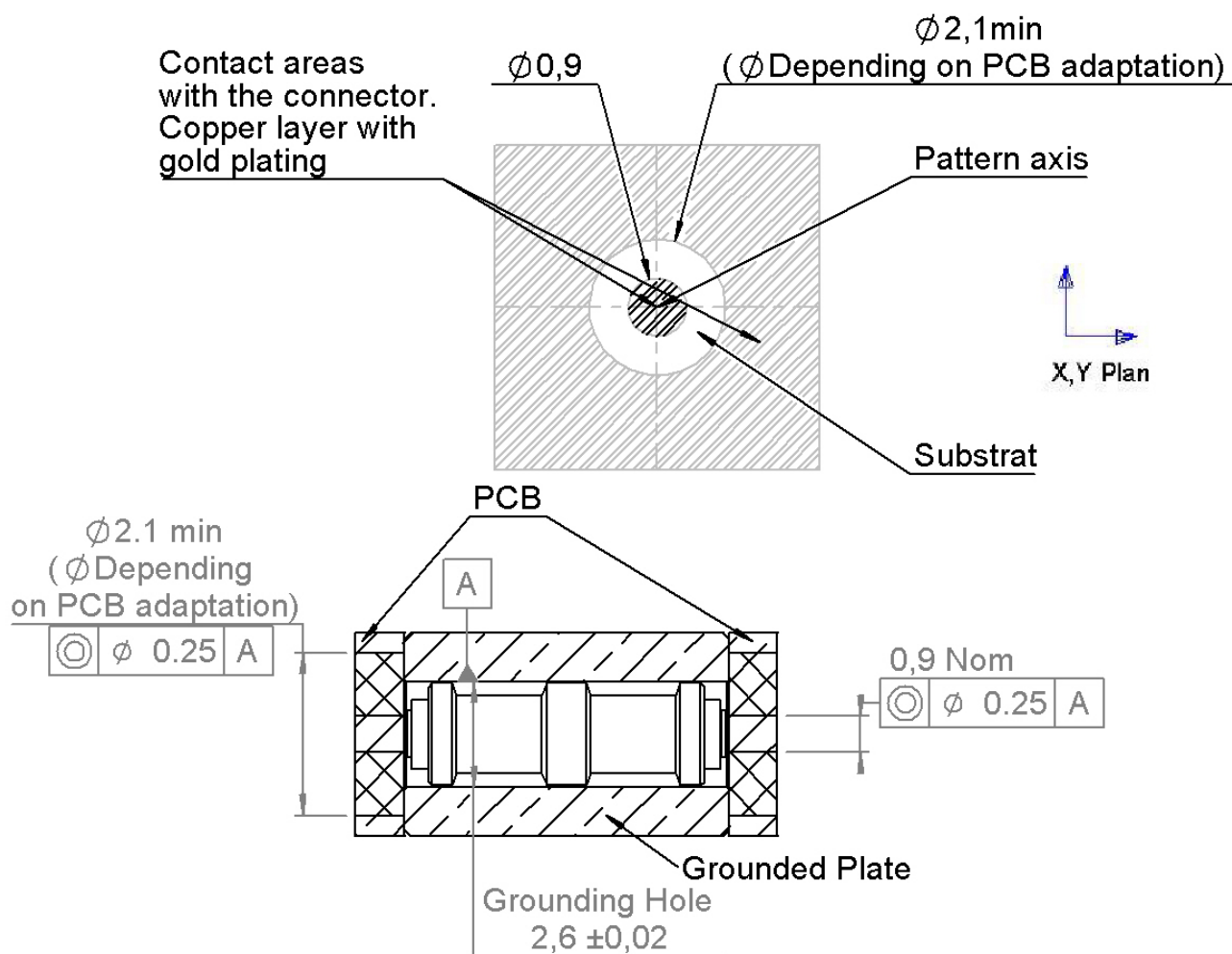
*** VSWR:1,20 Typical DC-40GHz Coaxial Line Only**

Value gated with coaxial measurement Tool in nominal position

**** Value for connector only estimated from measurement:**

Insertion Loss with coaxial measurement tool in nominal position -0.02-0.11 \sqrt{F} (GHz) dB Maxi

IMP SR Integration Dimension are given for information



**The misalignment between the grounding hole axis and the PCB
can't exceed a coaxiality default of 0.25 mm (X,Y plan)**