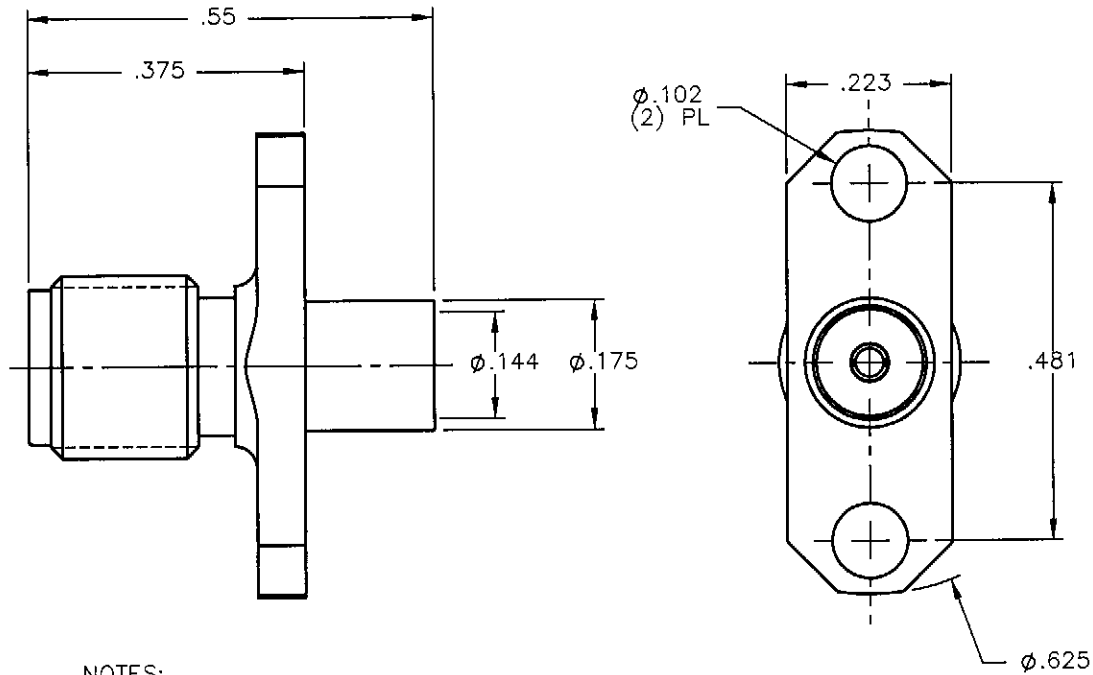


| REVISIONS |                 |          |          |
|-----------|-----------------|----------|----------|
| REV.      | DESCRIPTION     | DATE     | APPROVED |
| A         | INITIAL RELEASE | 07/13/09 | A.D.M.   |



NOTES:


MATERIALS:

1. BODY = STAINLESS STEEL PER ASTM A582, ALLOY 303, CONDITION "A".
2. INSULATOR = VIRGIN WHITE TEFLON PER ASTM D1710, GRADE 1, TYPE I, CLASS "B".
3. CONTACT = BERYLLIUM COPPER PER ASTM B196, ALLOY C17300, TEMPER TD04.

FINISHES:

1. BODY = GOLD PLATE PER MIL-G-45204, TYPE II, CLASS 0, GRADE C, OVER .000050 TO .00010 STRESS FREE NICKEL PER QQ-N-290.
2. CONTACT = GOLD PLATE PER MIL-G-45204, TYPE II, CLASS 1, GRADE C, OVER .00010 TO .00020 STRESS FREE SULFAMATE NICKEL PER QQ-N-290.

Property of Radiall Incorporated  
 This document cannot be reproduced or  
 communicated to a third party without prior  
 written permission of RADIALL Incorporated.

|   |                       |          |  |  |                        |               |              |
|---|-----------------------|----------|--|--|------------------------|---------------|--------------|
| UNLESS OTHERWISE SPECIFIED<br>DIMENSIONS ARE IN INCHES<br>TOLERANCES ON | DWN:                  | DATE     |  <b>APPLIED ENGINEERING PRODUCTS</b><br>104 John W. Murphy Dr.<br>New Haven, CT 06513<br><i>a RADIALL company</i> |  |                        |               |              |
|   | A.D.M.                | 07/13/09 |  |  |                        |               |              |
| DECIMAL   | ANGLE                 | CHKD:    | DATE   | <b>SMA STRAIGHT JACK<br/>         2 HOLE FLANGE MOUNT<br/>         DIRECT SOLDER TYPE FOR<br/>         .141 S/R &amp; SIMILAR CABLES</b> |                        |               |              |
|   |                       | D.N.     | 07/13/09   |  |                        |               |              |
| REFERENCE:  | MATERIALS & FINISHES: | APVD:    | DATE   | SIZE   | FSCM NO.               | DWG NO.       | REV          |
| ORIGINATED: A.D.M.<br>DATE: 07/13/09                                    | SEE NOTES             | J.M.     | 07/13/09   | A  | 19505                  | 9441-1583-009 | A            |
|   |                       |          |  | SCALE 4:1  | THIRD ANGLE PROJECTION |               | SHEET 1 OF 1 |

9441-1583-009