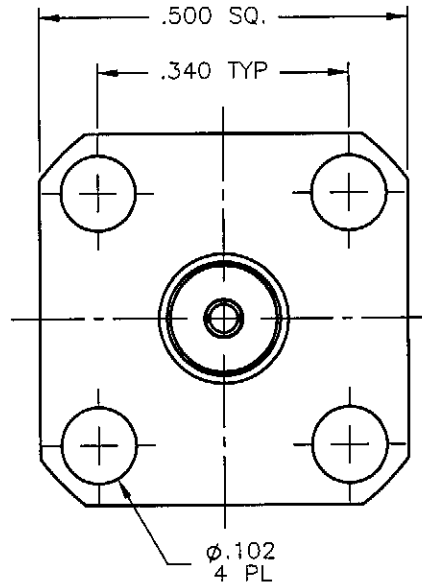
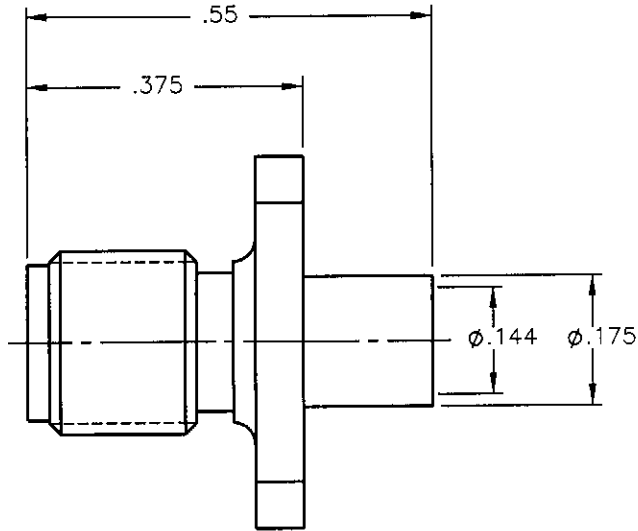
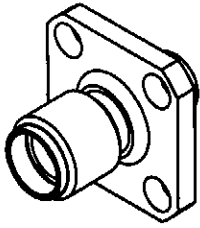


REVISIONS

REV.	DESCRIPTION	DATE	APPROVED
A	INITIAL RELEASE	07/13/09	A.D.M.



NOTES:

MATERIALS:

1. BODY = STAINLESS STEEL PER ASTM A582, ALLOY 303, CONDITION "A".
2. INSULATOR = VIRGIN WHITE TEFLON PER ASTM D1710, GRADE 1, TYPE I, CLASS "B".
3. CONTACT = BERYLLIUM COPPER PER ASTM B196, ALLOY C17300, TEMPER TD04.

FINISHES:

1. BODY = GOLD PLATE PER MIL-G-45204, TYPE II, CLASS 0, GRADE C, OVER .000050 TO .00010 STRESS FREE NICKEL PER QQ-N-290.
2. CONTACT = GOLD PLATE PER MIL-G-45204, TYPE II, CLASS 1, GRADE C, OVER .00010 TO .00020 STRESS FREE SULFAMATE NICKEL PER QQ-N-290.

Property of Radiall Incorporated
 This document cannot be reproduced or
 communicated to a third party without prior
 written permission of RADIALL Incorporated.

UNLESS OTHERWISE SPECIFIED DIMENSIONS ARE IN INCHES TOLERANCES ON	DWN:	DATE
	A.D.M.	07/13/09
	CHKD:	DATE
	D.N.	07/13/09
DECIMAL	ANGLE	APVD:
		J.M.
		DATE
		07/13/09



APPLIED ENGINEERING PRODUCTS

104 John W. Murphy Dr.
 New Haven, CT 06513

SMA STRAIGHT JACK
 4 HOLE FLANGE MOUNT
 DIRECT SOLDER TYPE FOR
 .141 S/R & SIMILAR CABLES

REFERENCE:	MATERIALS & FINISHES:
ORIGINATED: A.D.M. DATE: 07/13/09	SEE NOTES

SIZE	FSCM NO.	DWG NO.	REV
A	19505	9431-1583-009	A
SCALE 4:1		THIRD ANGLE PROJECTION	SHEET 1 OF 1

9431-1583-009