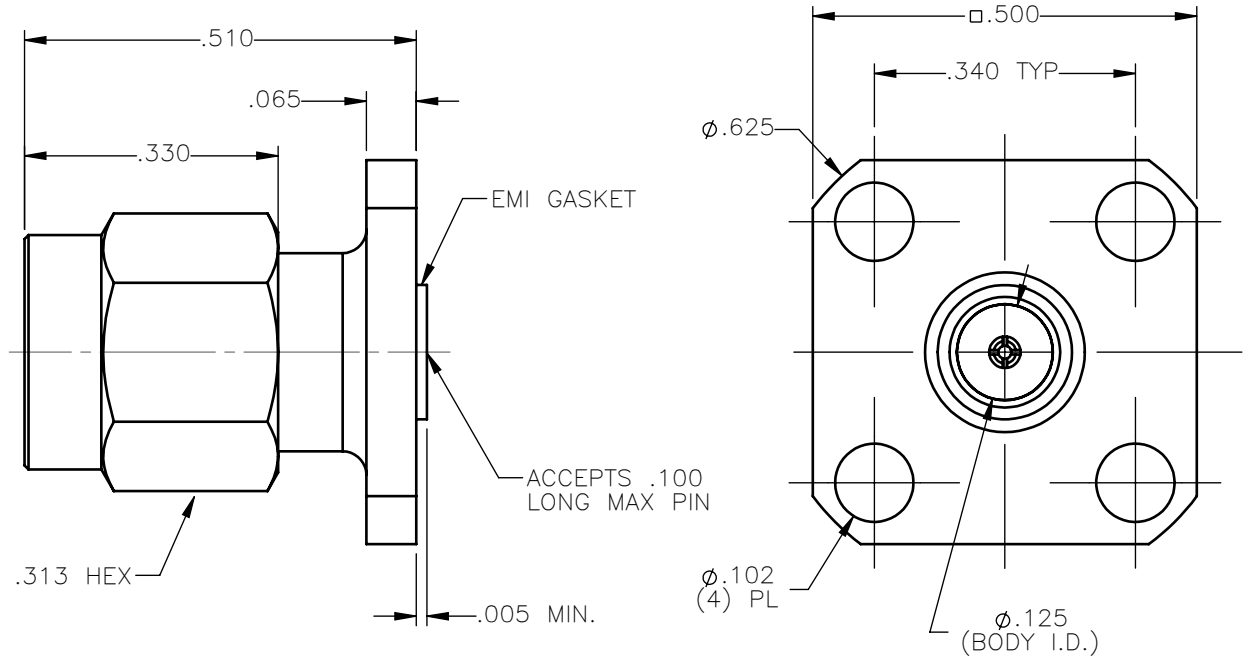


| REVISIONS | | | |
|-----------|-----------------|----------|----------|
| REV. | DESCRIPTION | DATE | APPROVED |
| A | INITIAL RELEASE | 02/26/15 | N.D. |





NOTES:

MATERIALS:

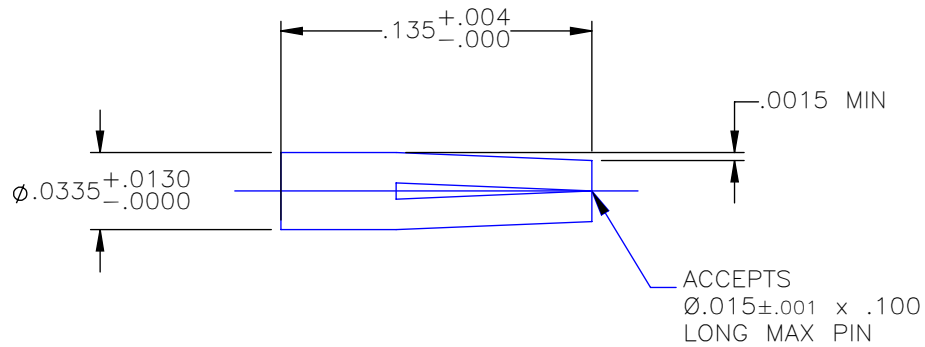
1. BODY & COUPLING NUT = STAINLESS STEEL PER ASTM A582, ALLOY 303, CONDITION "A".
2. INSULATOR = VIRGIN WHITE TEFLON PER ASTM D1710, GRADE 1, TYPE I, CLASS "B".
3. CONTACTS & RETAINING RING = BERYLLIUM COPPER PER ASTM B196, ALLOY C17300, TEMPER TD04.
4. GASKET = SILICONE RUBBER PER ZZ-R-765, CLASS 2B, GRADE 65-75.
5. EMI GASKET = CONDUCTIVE SILVER/SILICONE ELASTOMERS 70 DUROMETER

FINISHES:

1. BODY & COUPLING NUT = PASSIVATE PER SAE-AMS-2700
2. CONTACTS = GOLD PLATE PER ASTM B488-01, TYPE II, 50µin MIN, GRADE C, OVER 100 TO 200µin STRESS FREE SULFAMATE NICKEL PER QQ-N-290.

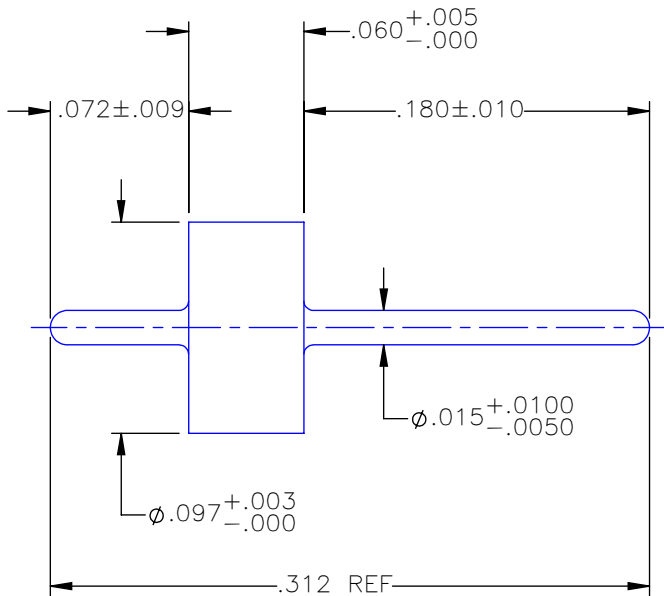
| | | | | | |
|---|------------|----------|---|---|--------------|
| UNLESS OTHERWISE SPECIFIED DIMENSIONS ARE IN INCHES TOLERANCES ON | DWN: | DATE |  Property of Radiall This document cannot be reproduced or communicated to a third party without prior written permission of RADIALL. |  | |
| | N.D. | 02/26/15 | | | |
| DECIMAL | ANGLE | CHKD: | DATE | SMA STRAIGHT JACK 4 HOLE FLANGE RECEPTACLE WITH GLASS SEAL | |
| | | D.N. | 02/26/15 | | |
| | | APVD: | DATE | | |
| | | J.M. | 02/26/15 | | |
| REFERENCE: | MATERIALS: | SIZE | FSCM NO. | DWG NO. | REV |
| ORIGINATED: N.D. DATE: 02/26/15 | SEE NOTES | A | 19505 | 9247-9513-001 | A |
| | | SCALE | 4:1 | THIRD ANGLE PROJECTION | SHEET 1 OF 2 |

9247-9513-001

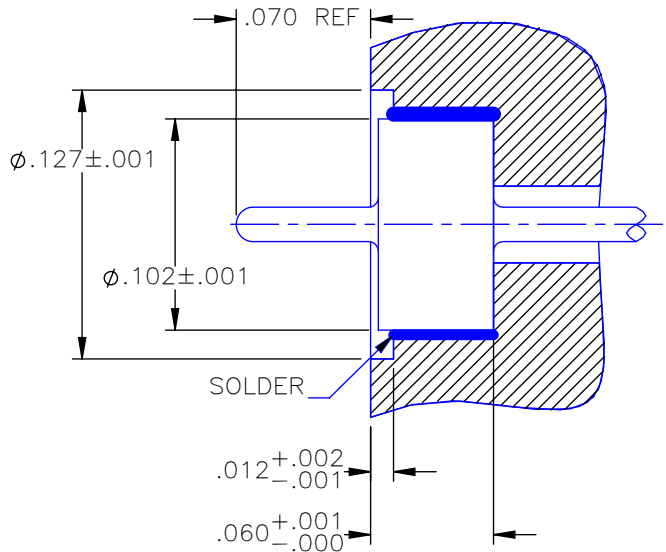


MATERIAL: BERYLLIUM COPPER PER ASTM B196, ALLOY C17300, TEMPER TD04.

FINISH: GOLD PLATE PER ASTM B488-01, TYPE II, 50 μ in MIN, GRADE C, OVER 100 TO 200 μ in STRESS FREE SULFAMATE NICKEL PER QQ-N-290.





RECOMMENDED MOUNTING



MATERIALS: OUTER RING AND PIN = KOVAR
GLASS BEAD = CORNING 7070

FINISHES: OUTER RING AND PIN = GOLD PLATE PER ASTM B488-01, TYPE II, GRADE C, 10 μ in MIN OVER STRESS FREE NICKEL PLATE PER QQ-N-290, 20 TO 40 μ in THICK OVER A MIN. COPPER STRIKE PER MIL-C-14550.

| | | | | | | | |
|---|-------|-------------------------|--|---|----------|---------------------------|--------------|
| UNLESS OTHERWISE SPECIFIED DIMENSIONS ARE IN INCHES TOLERANCES ON | DWN: | DATE |  Property of Radiall This document cannot be reproduced or communicated to a third party without prior written permission of RADIALL. |  | | | |
| | N.D. | 02/26/15 | | | | | |
| DECIMAL | ANGLE | CHKD: | DATE | SMA STRAIGHT JACK 4 HOLE FLANGE RECEPTACLE WITH GLASS SEAL | | | |
| | | D.N. | 02/26/15 | | | | |
| | | APVD: | DATE | | | | |
| REFERENCE: | | J.M. | 02/26/15 | SIZE | FSCM NO. | DWG NO. | REV |
| ORIGINATED: N.D. DATE: 02/26/15 | | MATERIALS AND FINISHES: | SEE NOTES | A | 19505 | 9247-9513-001 | A |
| | | | | SCALE | 4:1 | THIRD ANGLE PROJECTION | SHEET 2 OF 2 |

9247-9513-001