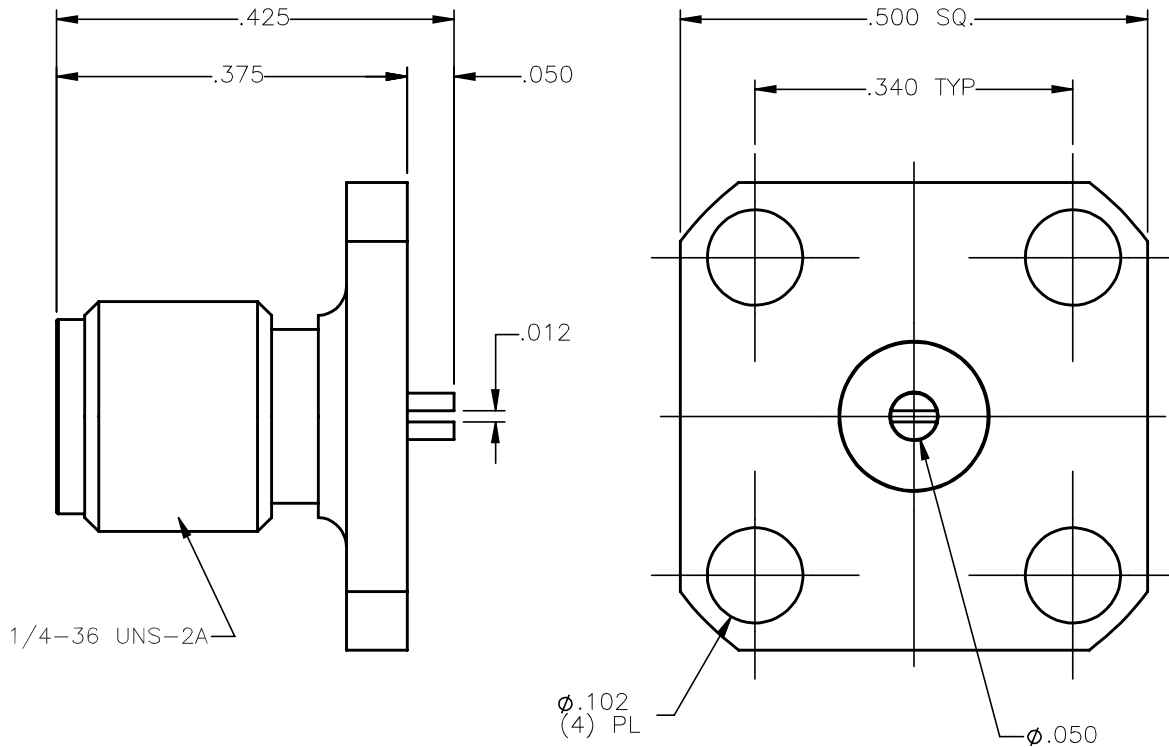


REVISIONS			
REV.	DESCRIPTION	DATE	APPROVED
A	INITIAL RELEASE	11/10/14	N.D.






NOTES:

MATERIALS:

1. BODY = STAINLESS STEEL PER ASTM A582, ALLOY 303, CONDITION "A".
2. INSULATOR = VIRGIN WHITE TEFLON PER ASTM D1710, GRADE 1, TYPE I, CLASS "B".
3. CONTACT = BERYLLIUM COPPER PER ASTM B196, ALLOY C17300, TEMPER TD04.

FINISHES:

1. BODY = PASSIVATE PER SAE-AMS-2700
2. CONTACT = GOLD PLATE PER ASTM B488-01, TYPE II, 50µin MIN, GRADE C, OVER 100 TO 200µin STRESS FREE SULFAMATE NICKEL PER QQ-N-290.

UNLESS OTHERWISE SPECIFIED DIMENSIONS ARE IN INCHES TOLERANCES ON		DWN: N.D.	DATE: 11/10/14	 Property of Radiall This document cannot be reproduced or communicated to a third party without prior written permission of RADIALL.	
DECIMAL	ANGLE	CHKD: D.N.	DATE: 11/10/14		
		APVD: J.M.	DATE: 11/10/14	SMA STRAIGHT JACK (4) HOLE FLANGE MOUNT SLOTTED CONTACT RECEPTACLE	
REFERENCE: ORIGINATED: N.D. DATE: 11/10/14		MATERIALS AND FINISHES: SEE NOTES		SIZE: A FSCM NO.: 19505 SCALE: 5:1	DWG NO.: 9204-9113-002 THIRD ANGLE PROJECTION 
				REV: A	SHEET 1 OF 1

9204-9113-002