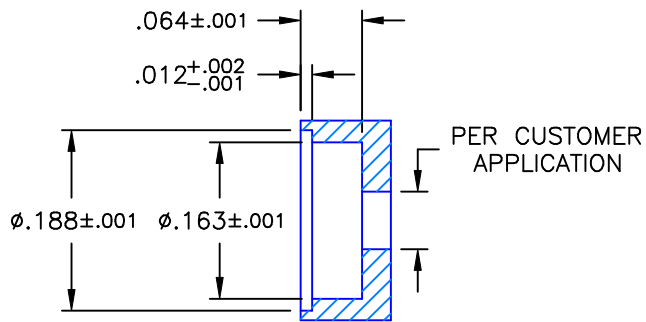
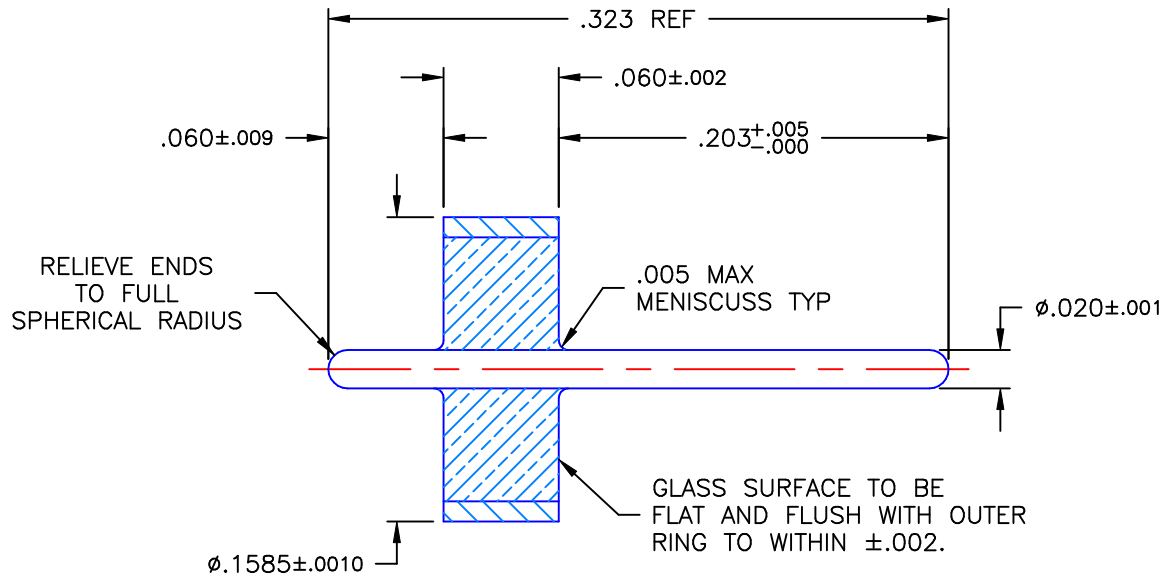



REVISIONS			
REV	DESCRIPTION	DATE	APPROVED
H	ECO #4608	07/01/02	A.D.M.
H01	ECN #8272	08/19/11	D.N.



MOUNTING DIMENSIONS  
SCALE 1:2

NOTES:

- MATERIALS:  
OUTER RING AND PIN = KOVAR  
GLASS BEAD = EN-1
- FINISH:  
OUTER RING AND PIN = GOLD PLATE PER MIL-G-45204, TYPE II, GRADE C, CLASS I, OVER NICKEL PER MIL-C-26074, CLASS I, OVER COPPER PER MIL-C-14550.
- PIN AND OUTER RING TO BE CONCENTRIC WITHIN .003 T.I.R.
- GLASS SURFACES TO BE FREE OF CRAZING OR HAIRLINE CRACKS UNDER FOUR POWER MAGNIFICATION.
- ASSEMBLY TO HAVE LEAK RATE LESS THAN  $1 \times 10^{-8}$  cc/sec.
- UNLESS OTHERWISE SPECIFIED, BREAK SHARP EDGES .003 MAX.

UNLESS OTHERWISE SPECIFIED DIMENSIONS ARE IN INCHES TOLERANCES ON		DWN: A.D.M.	DATE: 06/28/02	 Property of Radiall This document cannot be reproduced or communicated to a third party without prior written permission of RADIALL.	920-69
DECIMAL	ANGLE	CHKD: D.N.	DATE: 07/01/02		
.XX = +/- .010	± 2°	APVD: D.J.C.	DATE: 07/01/02	GLASS SEAL ASSEMBLY 50 OHM	
.XXX = +/- .005		REFERENCE: MATERIALS & FINISHES: SEE NOTES			
.XXXX = +/- .0005		SIZE: A	FSCM NO.: 19505	DWG NO.: 920-69	REV: H01
ORIGINATOR: P.J.P. DATE: 05/12/83	SCALE: 10:1		SHEET 1 OF 1		