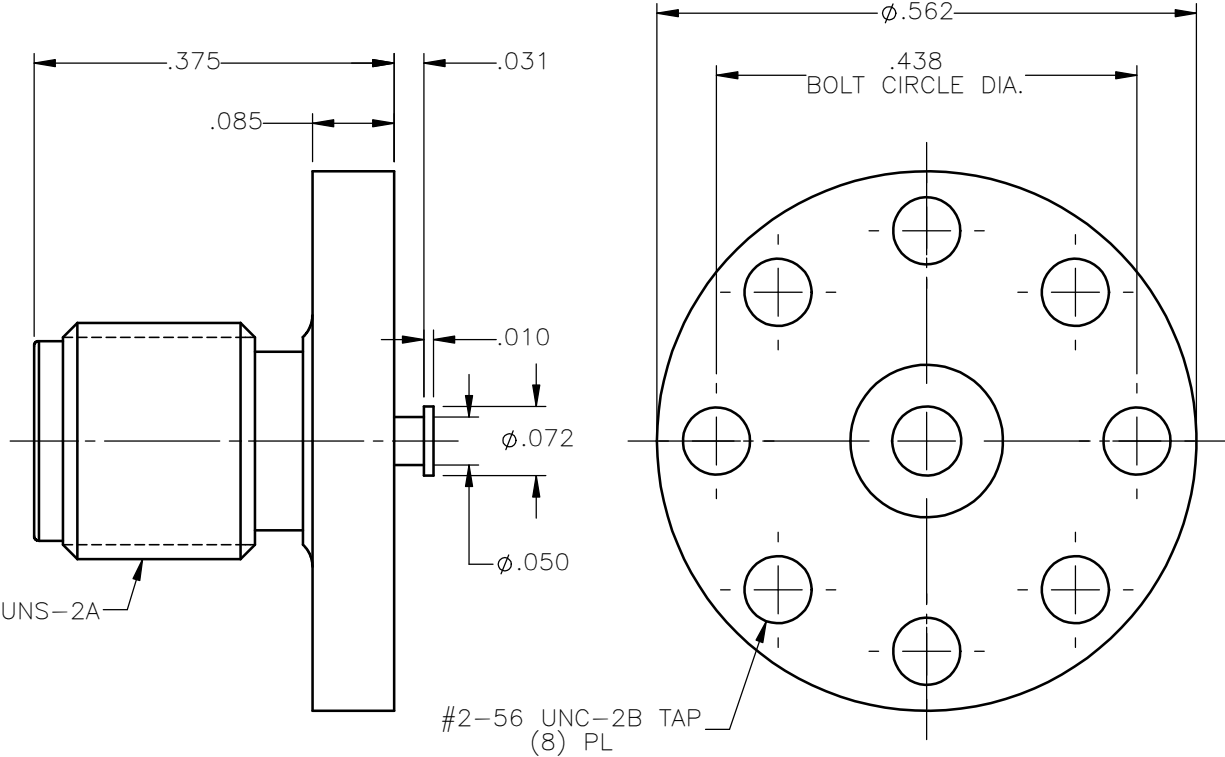
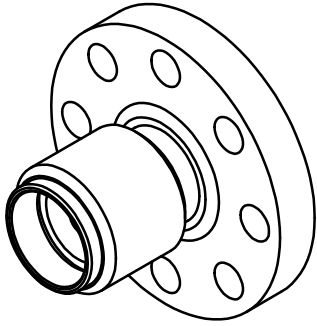


REVISIONS

REV.	DESCRIPTION	DATE	APPROVED
A	INITIAL RELEASE	08/27/15	D.N.



NOTES:

MATERIALS:

1. BODY = STAINLESS STEEL PER ASTM A582, ALLOY 303, CONDITION "A".
2. INSULATOR = VIRGIN WHITE TEFLON PER ASTM D1710, GRADE 1, TYPE I, CLASS "B".
3. CONTACT = BERYLLIUM COPPER PER ASTM B196, ALLOY C17300, TEMPER TD04.

FINISHES:

1. BODY = PASSIVATE PER SAE-AMS-2700
2. CONTACT = GOLD PLATE PER ASTM B488-01, TYPE II, 50µin MIN, GRADE C, OVER 100 TO 200µin STRESS FREE SULFAMATE NICKEL PER QQ-N-290.

UNLESS OTHERWISE SPECIFIED  
DIMENSIONS ARE IN INCHES  
TOLERANCES ON

DWN:	DATE
D.N.	08/27/15
CHKD:	DATE
N.D.	08/27/15
APVD:	DATE
J.M.	08/27/15



Property of Radiall  
This document cannot be reproduced or  
communicated to a third party without prior  
written permission of RADIALL.



SMA STRAIGHT JACK  
TO STRIPLINE  
NON-CAPTIVE CONTACT

REFERENCE:  
ORIGINATED: D.N.  
DATE: 08/27/15

MATERIALS & FINISHES:  
SEE NOTES

SIZE A	FSCM NO. 19505	DWG NO. 9003-9213-001	REV A
SCALE 5:1		THIRD ANGLE PROJECTION	SHEET 1 OF 1

9003-9213-001