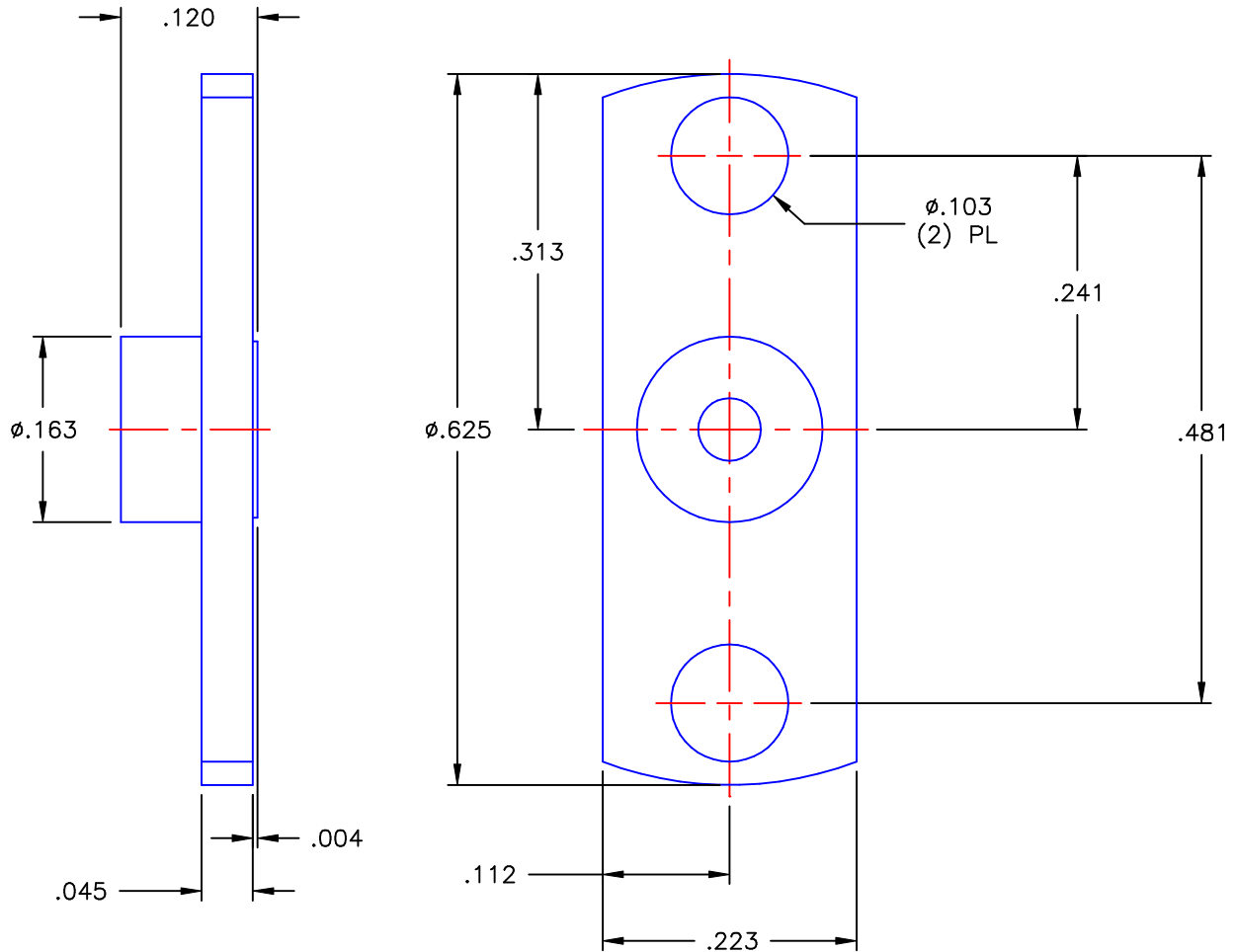


PROPRIETARY INFORMATION  
 NOT TO BE RELEASED  
 WITHOUT WRITTEN PERMISSION  
 FROM AN AUTHORIZED  
 REPRESENTATIVE OF  
 APPLIED ENGINEERING PRODUCTS

REVISIONS			
REV	DESCRIPTION	DATE	APPROVED
A	INITIAL RELEASE	03/17/06	D.N.




NOTES:

MATERIAL:

1. BODY = STAINLESS STEEL PER ASTM A582, ALLOY 303, CONDITION "A".

FINISH:

1. BODY = PASSIVATE PER QQ-P-35, TYPE VI.

UNLESS OTHERWISE SPECIFIED DIMENSIONS ARE IN INCHES TOLERANCES ON	DWN:	DATE	 <b>APPLIED ENGINEERING PRODUCTS</b> 104 John W. Murphy Dr. New Haven, CT 06513			
	D.N.	03/17/06				
DECIMAL	ANGLE	CHKD:	SMP STRAIGHT MALE SHROUD "FULL DETENT" (NO CENTER CONTACT) (2) HOLE FLANGE MOUNT			
		A.D.M.		03/17/06		
		APVD:	DATE			
		D.J.C.	03/17/06			
REFERENCE:	MATERIAL & FINISH:		SIZE	FSCM NO.	DWG. NO.	REV
403-106	SEE NOTES		A	19505	7516-9013-000	A
ORIGINATOR: D.N. DATE: 03/17/06			SCALE 6:1	THIRD ANGLE PROJECTION		SHEET 1 OF 1

7516-9013-000