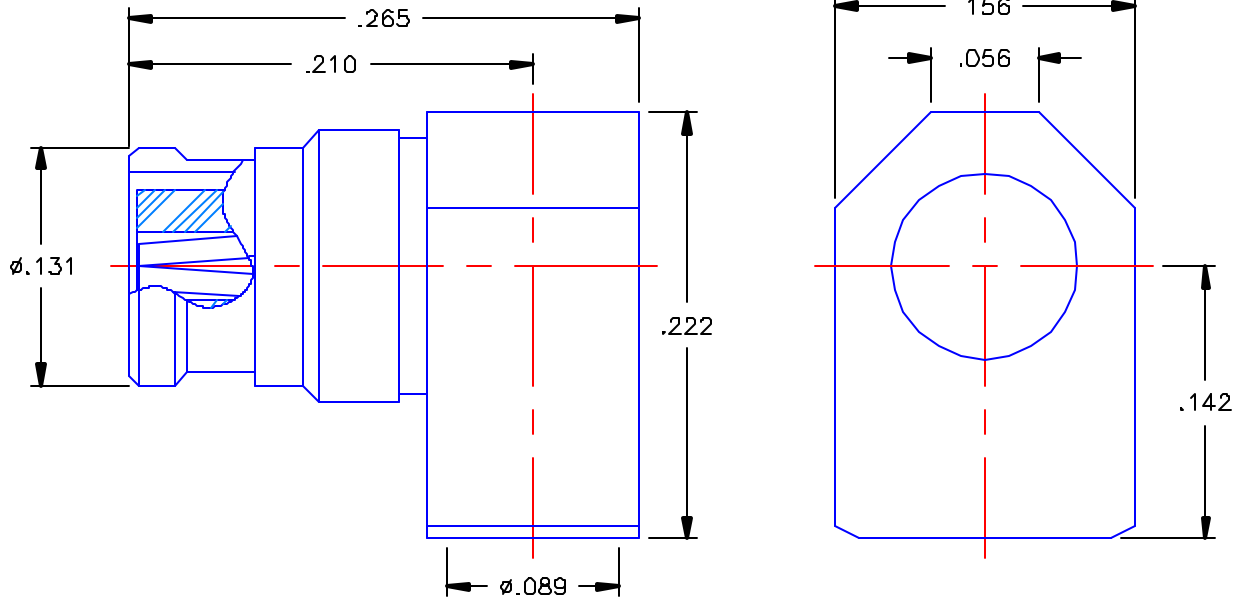


PROPRIETARY INFORMATION
 NOT TO BE RELEASED
 WITHOUT WRITTEN PERMISSION
 FROM AN AUTHORIZED
 REPRESENTATIVE OF
 APPLIED ENGINEERING PRODUCTS

REVISIONS			
REV	DESCRIPTION	DATE	APPROVED
-	INITIAL RELEASE	12/30/02	A.D.M.
A	ECO #4913	03/20/03	A D.M.
B	ECO #5458	07/15/04	J.E.D.




NOTES:

MATERIALS:

1. INSULATOR = VIRGIN WHITE TEFLON PER ASTM D1710, GRADE 1, TYPE I, CLASS "B".
2. CAP = BRASS PER ASTM B16, ALLOY C36000, TEMPER H02.
3. ALL OTHER METAL PARTS = BERYLLIUM COPPER PER ASTM B196, ALLOY C17300, TEMPER TD04.

FINISHES:

1. CAP = GOLD PLATE PER MIL-G-45204, TYPE II, CLASS 0, GRADE C, OVER .00010 TO .00020 COPPER STRIKE PER MIL-C-14550.
2. ALL OTHER METAL PARTS = GOLD PLATE PER MIL-G-45204, TYPE II, CLASS 1, GRADE C, OVER .00010 TO .00020 STRESS FREE SULFAMATE NICKEL PER QQ-N-290.

UNLESS OTHERWISE SPECIFIED DIMENSIONS ARE IN INCHES TOLERANCES ON	DWN. A D.M.	DATE 12/19/02		APPLIED ENGINEERING PRODUCTS	
	CHKD: D.N.	DATE 12/30/02		104 John W. Murphy Dr. New Haven, CT 06513	
DECIMAL	ANGLE	APVD: G.A.T.	DATE 12/30/02	SMP RIGHT ANGLE FEMALE DIRECT SOLDER TYPE FOR .086 S/R CABLE	
REFERENCE: Y-1223-4	MATERIALS & FINISHES: SEE NOTES	SIZE A	FSCM NO. 19505	DWG NO. 7501-1562-010	REV B
ORIGINATOR: A.D.M. DATE: 12/19/02		SCALE 10:1			SHEET 1 OF 1

7501-1562-010