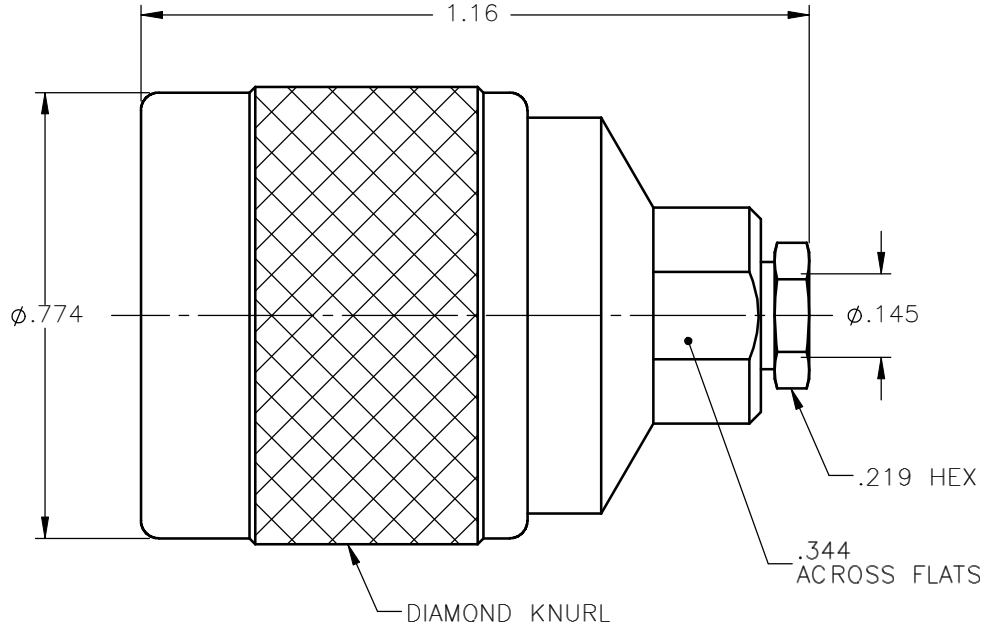


REVISIONS			
REV.	DESCRIPTION	DATE	APPROVED
A	INITIAL RELEASE	10/28/10	A.D.M.




NOTES:

MATERIALS:

1. INSULATORS = VIRGIN WHITE TEFLON PER ASTM D1710, GRADE 1, TYPE I, CLASS "B".
2. WASHER = PHOSPHOR BRONZE PER ASTM B139, COPPER ALLOY C53400, TEMPER H04.
3. GASKET = DOW CORNING SILASTIC 250, SILICONE RUBBER 45-55 DUROMETER.
4. ALL OTHER METAL PARTS = BRASS PER ASTM B16, ALLOY C36000, TEMPER H02.

FINISHES:

1. CONTACT = GOLD PLATE PER MIL-G-45204, TYPE II, CLASS 1, GRADE C, OVER .00010 TO .00020 STRESS FREE SULFAMATE NICKEL PER QQ-N-290.
2. ALL OTHER METAL PARTS = GOLD PLATE PER MIL-G-45204, TYPE II, CLASS 0, GRADE C, OVER .00010 TO .00020 COPPER STRIKE PER MIL-C-14550.

UNLESS OTHERWISE SPECIFIED DIMENSIONS ARE IN INCHES TOLERANCES ON		DWN: A.D.M.	DATE: 10/28/10	 <p>Property of Radiall This document cannot be reproduced or communicated to a third party without prior written permission of RADIALL.</p>
DECIMAL	ANGLE	CHKD: D.N.	DATE: 10/28/10	
		APVD: J.M.	DATE: 10/28/10	
REFERENCE:		MATERIALS & FINISHES:		<p>TYPE "N" STRAIGHT PLUG COMPRESSION TYPE FOR .141 S/R & SIMILAR CABLES</p>
ORIGINATED: A.D.M. DATE: 10/28/10		SEE NOTES		
		SIZE: A	FSCM NO.: 19505	DWG NO.: 4000-1041-009
		SCALE: 3:1	THIRD ANGLE PROJECTION	
				REV: A
				SHEET 1 OF 1

4000-1041-009