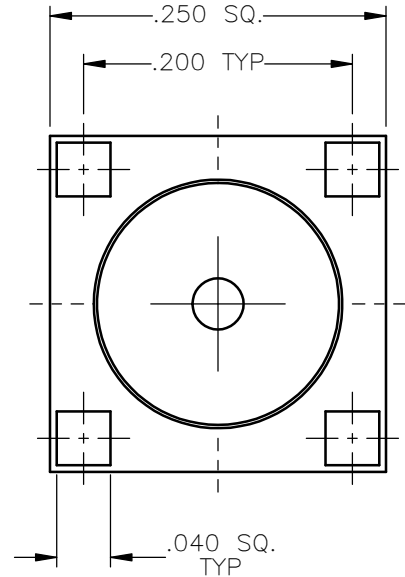
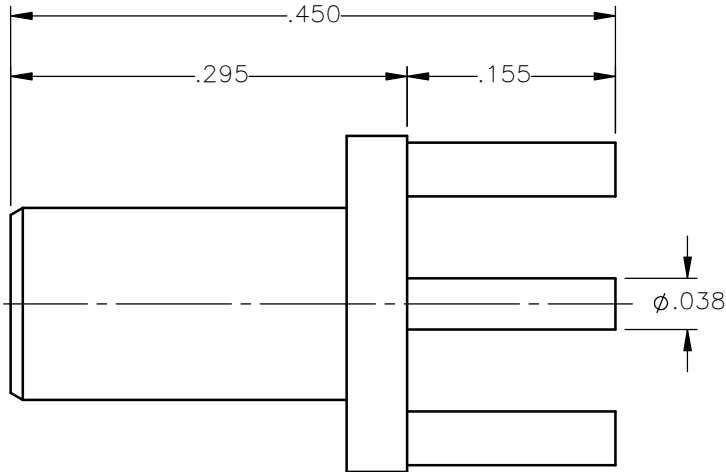


REVISIONS			
REV.	DESCRIPTION	DATE	APPROVED
A	INITIAL RELEASE	07/25/12	D.N.



NOTES:

MATERIALS:

1. BODY & CONTACT = BRASS PER ASTM B16, ALLOY C36000, TEMPER H02.
2. INSULATOR = VIRGIN WHITE TEFLON PER ASTM D1710, GRADE 1, TYPE I, CLASS "B".

FINISHES:

1. BODY = NICKEL PLATE PER QQ-N-290, CLASS 1, GRADE G, EXCEPT .0001 TO .0002 THICK OVER .00005 TO .0001 THICK COPPER PER MIL-C-14550.
2. CONTACT = GOLD PLATE PER MIL-G-45204, TYPE II, CLASS 1, GRADE C, OVER .00010 TO .00020 STRESS FREE SULFAMATE NICKEL PER QQ-N-290.

UNLESS OTHERWISE SPECIFIED
DIMENSIONS ARE IN INCHES
TOLERANCES ON

DWN:	DATE
D.N.	07/25/12
CHKD:	DATE
J.S.	07/25/12
APVD:	DATE
J.M.	07/25/12



Property of Radiall
This document cannot be reproduced or
communicated to a third party without prior
written permission of RADIALL.



SLB STRAIGHT MALE JACK
P.C.B. MOUNT
RECEPTACLE

DECIMAL	ANGLE

REFERENCE:
ORIGINATED: D.N.
DATE: 07/25/12

MATERIALS & FINISHES:
SEE NOTES

SIZE	FSCM NO.	DWG NO.	REV
A	19505	3009-7511-000	A
SCALE 7:1		THIRD ANGLE PROJECTION	SHEET 1 OF 1

3009-7511-000