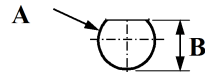
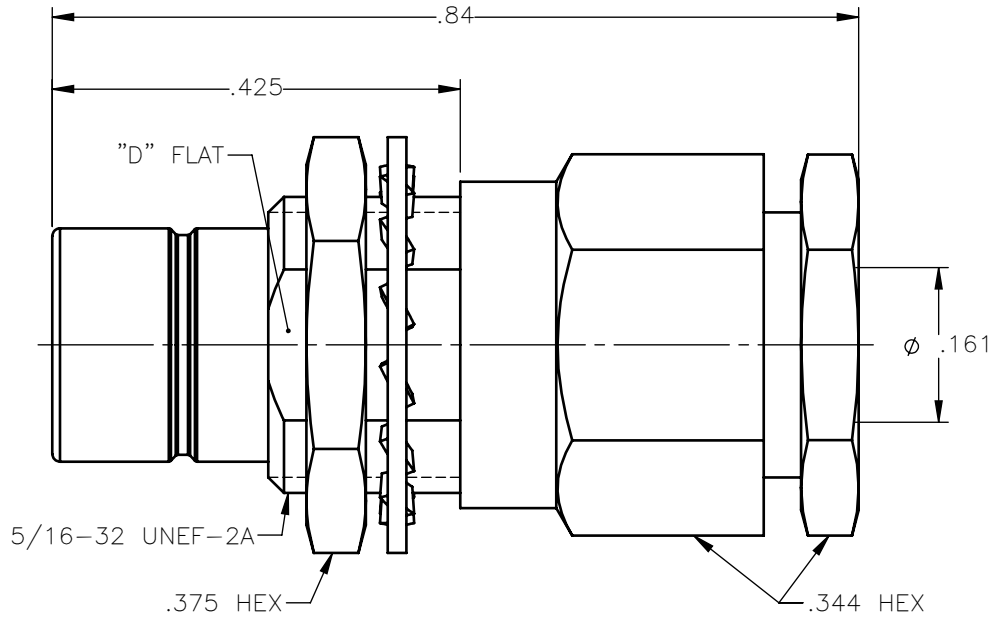


**PANEL CUT OUT**



mm		
	Maxi	mini
<b>A</b>	.333	.327
<b>B</b>	.300	.294

REVISIONS			
REV.	DESCRIPTION	DATE	APPROVED
A	INITIAL RELEASE	01/15/20	E.M.





NOTES:

MATERIALS:

1. INSULATORS = VIRGIN WHITE TEFLON PER ASTM D1710, GRADE 1, TYPE I, CLASS "B".
2. LOCKWASHER = PHOSPHOR BRONZE.
3. ALL OTHER METAL PARTS = BRASS PER ASTM B16, ALLOY C36000, TEMPER H02.

FINISHES:

1. CONTACT = GOLD PLATE PER ASTM B488 OR MIL-DTL-45204, TYPE II, 50 $\mu$ in MIN, GRADE C, OVER 100 TO 200 $\mu$ in SULFAMATE OR ELECTROLYTIC NICKEL PER AMS-QQ-N-290.
2. ALL OTHER METAL PARTS = NICKEL PLATE PER AMS-QQ-N-290, CLASS 1, GRADE G, EXCEPT 100 TO 200 $\mu$ in THICK OVER 50 TO 100 $\mu$ in THICK COPPER PER AMS 2418.

UNLESS OTHERWISE SPECIFIED DIMENSIONS ARE IN INCHES TOLERANCES ON	DWN:	DATE	 Property of Radiall This document cannot be reproduced or communicated to a third party without prior written permission of RADIALL.			
	E.M.	01/15/20				
DECIMAL	ANGLE	CHKD:	DATE	<b>75 OHM SNAP-ON STRAIGHT MALE JACK BULKHEAD MOUNT CLAMP TYPE FOR RG-180 &amp; SIMILAR CABLES</b>		
		J.S.	01/15/20			
		APVD:	DATE			
		J.M.	01/15/20			
REFERENCE:	MATERIALS & FINISHES:		SIZE	FSCM NO.	DWG NO.	REV
ORIGINATED: E.M. DATE: 01/15/20	SEE NOTES		A	19505	2703-7551-004	A
			SCALE 5:1	THIRD ANGLE PROJECTION		SHEET 1 OF 1

2703-7551-004