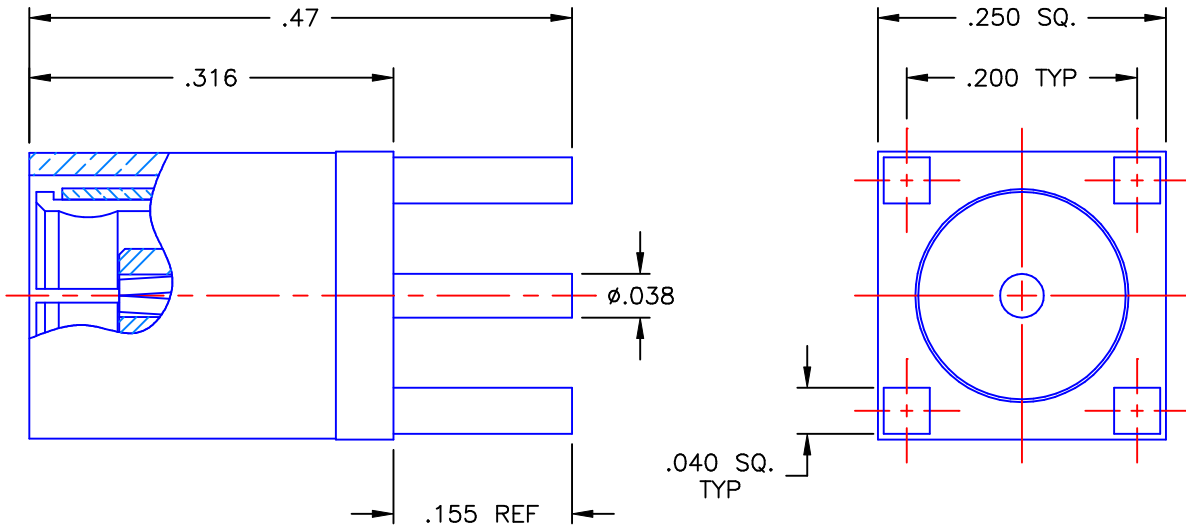


REVISIONS			
REV	DESCRIPTION	DATE	APPROVED
A	ECO #6996	01/29/08	A.D.M.



**PROPRIETARY INFORMATION
 NOT TO BE RELEASED
 WITHOUT WRITTEN PERMISSION
 FROM AN AUTHORIZED
 REPRESENTATIVE OF
 APPLIED ENGINEERING PRODUCTS**



NOTES:

MATERIALS:

1. BODY = BRASS PER ASTM B16, ALLOY C36000, TEMPER H02.
2. INSULATOR = VIRGIN WHITE TEFLON PER ASTM D1710, GRADE 1, TYPE I, CLASS "B".
3. CONTACT & SPRING = BERYLLIUM COPPER PER ASTM B196, ALLOY C17300, TEMPER TD04.
4. SLEEVE = BRASS PER ASTM B16, ALLOY C36000, TEMPER H02, BRASS TO BE SPEC'D. @ 75-82 ROCKWELL "B" TENSILE STRENGTH 55-65 KPSI.

FINISHES:

1. CONTACT = GOLD PLATE PER MIL-G-45204, TYPE II, CLASS 1, GRADE C, OVER .00010 TO .00020 STRESS FREE SULFAMATE NICKEL PER QQ-N-290.
2. ALL OTHER METAL PARTS = NICKEL PLATE PER QQ-N-290, CLASS 1, GRADE G, EXCEPT .0001 TO .0002 THICK OVER .00005 TO .0001 THICK COPPER PER MIL-C-14550.

UNLESS OTHERWISE SPECIFIED DIMENSIONS ARE IN INCHES TOLERANCES ON	DWN:	DATE	 APPLIED ENGINEERING PRODUCTS 104 John W. Murphy Dr. New Haven, CT 06513		
	D.N.	01/29/08			
DECIMAL	ANGLE	CHKD:	SMB STRAIGHT FEMALE PLUG P.C.B. MOUNT RECEPTACLE		
		A.D.M.		01/29/08	
		APVD:	DATE		
		J.M.	01/29/08		
REFERENCE:	MATERIALS & FINISHES:	SIZE	FSCM NO.	DWG. NO.	REV
ORIGINATOR: D.N. DATE: 10/20/97	SEE NOTES	A	19505	2025-7511-000	A
		SCALE 6:1	THIRD ANGLE PROJECTION 		SHEET 1 OF 1

2025-7511-000