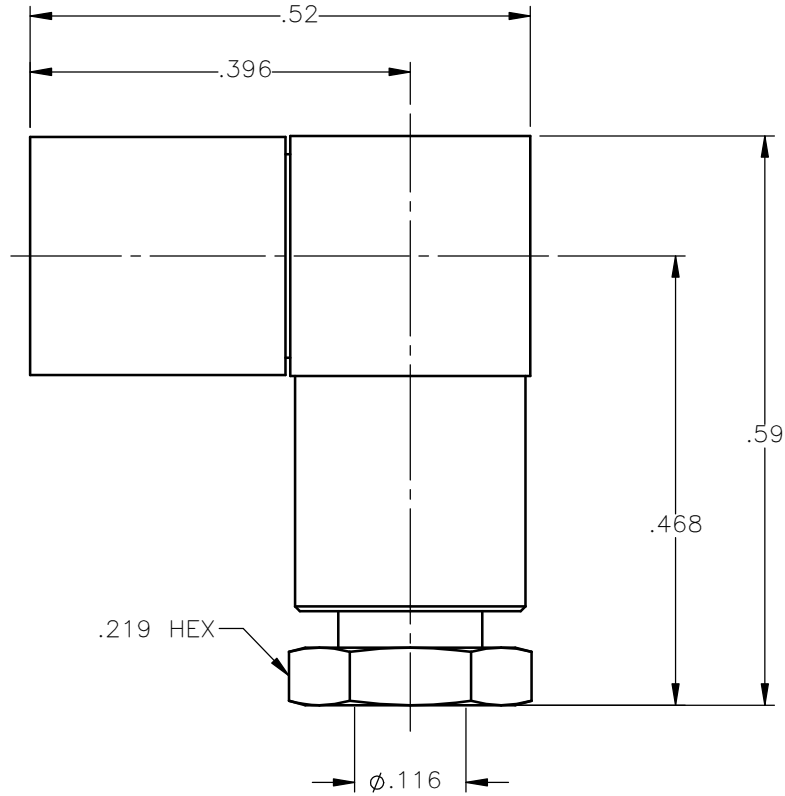


| REVISIONS | | | |
|-----------|-------------------------------------|----------|----------|
| REV. | DESCRIPTION | DATE | APPROVED |
| B | REDRAWN, UPDATED Ø.116 WAS Ø.121 | 09/19/16 | D.N. |





NOTES:

MATERIALS: CONFORMS TO MIL-PRF-39012/69-0004

1. INSULATORS = VIRGIN WHITE TEFLON PER ASTM D1710, GRADE 1, TYPE I, CLASS "B".
2. CONTACT & SPRING = BERYLLIUM COPPER PER ASTM B196, ALLOY C17300, TEMPER TD04.
3. ALL OTHER METAL PARTS = BRASS PER ASTM B16, ALLOY C36000, TEMPER H02.

FINISHES:

1. BODIES = GOLD PLATE PER ASTM B488-11, TYPE II, 50µin MIN, GRADE C, OVER 100 TO 200µin COPPER STRIKE PER AMS 2418.
2. CONTACT = GOLD PLATE PER ASTM B488-11, TYPE II, 50µin MIN, GRADE C, OVER 100 TO 200µin STRESS FREE SULFAMATE NICKEL PER AMS-QQ-N-290.
3. SPRING = GOLD PLATE PER ASTM B488-11, TYPE II, 30µin (.76µm) MIN, GRADE D, OVER 100 TO 200µin (2.54 TO 5.08µm) COPPER STRIKE PER AMS 2418.
4. ALL OTHER METAL PARTS = GOLD PLATE PER ASTM B488-11, TYPE II, 30µin MIN, GRADE C, OVER 100 TO 200µin COPPER STRIKE PER AMS 2418.

| | | | | |
|---|-----------------------|----------|--|--|
| UNLESS OTHERWISE SPECIFIED DIMENSIONS ARE IN INCHES TOLERANCES ON | DWN: | DATE |  Property of Radiall This document cannot be reproduced or communicated to a third party without prior written permission of RADIALL. |  |
| | D.N. | 04/07/11 | | |
| DECIMAL | ANGLE | CHKD: | DATE | SMB RIGHT ANGLE FEMALE PLUG CLAMP TYPE FOR RG-316 AND SIMILAR CABLES |
| | | M.J. | 04/07/11 | |
| | | APVD: | DATE | |
| REFERENCE: | MATERIALS & FINISHES: | J.M. | 04/07/11 | SIZE A FSCM NO. 19505 DWG NO. 2005-1551-903 REV B SCALE 5:1 THIRD ANGLE PROJECTION SHEET 1 OF 1 |
| ORIGINATED: D.N. DATE: 04/07/11 | SEE NOTES | | | |

2005-1551-903