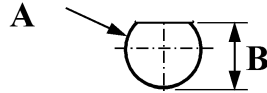
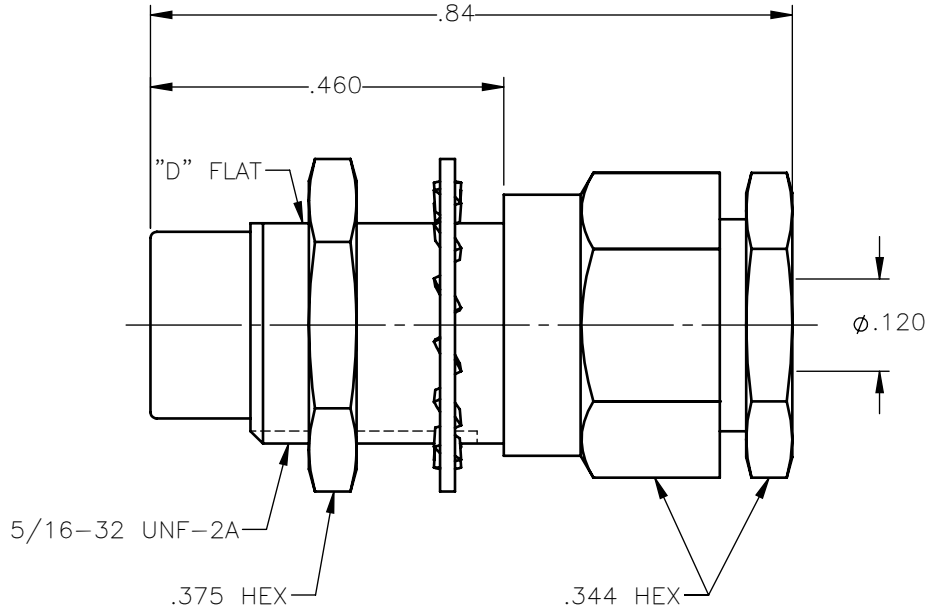


PANEL CUT OUT



inches		
	Maxi	mini
A	.333	.327
B	.300	.294

REVISIONS			
REV.	DESCRIPTION	DATE	APPROVED
A	INITIAL RELEASE	03/29/18	C.E.



NOTES:

MATERIALS:

1. INSULATORS = VIRGIN WHITE TEFLON PER ASTM D1710, GRADE 1, TYPE I, CLASS "B".
2. LOCKWASHER = PHOSPHOR BRONZE PER ASTM B139, COPPER ALLOY C53400, TEMPER H04.
3. ALL OTHER METAL PARTS = BRASS PER ASTM B16, ALLOY C36000, TEMPER H02.

FINISHES:

1. CONTACT = GOLD PLATE PER ASTM B488-01, TYPE II, 50 μ in MIN, GRADE C, OVER 100 TO 200 μ in STRESS FREE SULFAMATE NICKEL PER QQ-N-290.
2. ALL OTHER METAL PARTS = NICKEL PLATE PER AMS-QQ-N-290, CLASS 1, GRADE G, EXCEPT 100 TO 200 μ in THICK OVER 50 TO 100 μ in THICK COPPER PER AMS 2418.

UNLESS OTHERWISE SPECIFIED DIMENSIONS ARE IN INCHES TOLERANCES ON

DWN:	DATE
C.E.	03/29/18
CHKD:	DATE
D.N.	03/29/18
APVD:	DATE
J.M.	03/29/18



Property of Radiall
This document cannot be reproduced or communicated to a third party without prior written permission of RADIALL.



75 OHM STRAIGHT MALE JACK BULKHEAD MOUNT CLAMP TYPE FOR RG-316 & SIMILAR CABLES

REFERENCE:	MATERIALS & FINISHES:
ORIGINATED: C.E. DATE: 03/29/18	SEE NOTES

SIZE A	FSCM NO. 19505	DWG NO. 1703-7551-003	REV A
SCALE 4:1		THIRD ANGLE PROJECTION	SHEET 1 OF 1

1703-7551-003