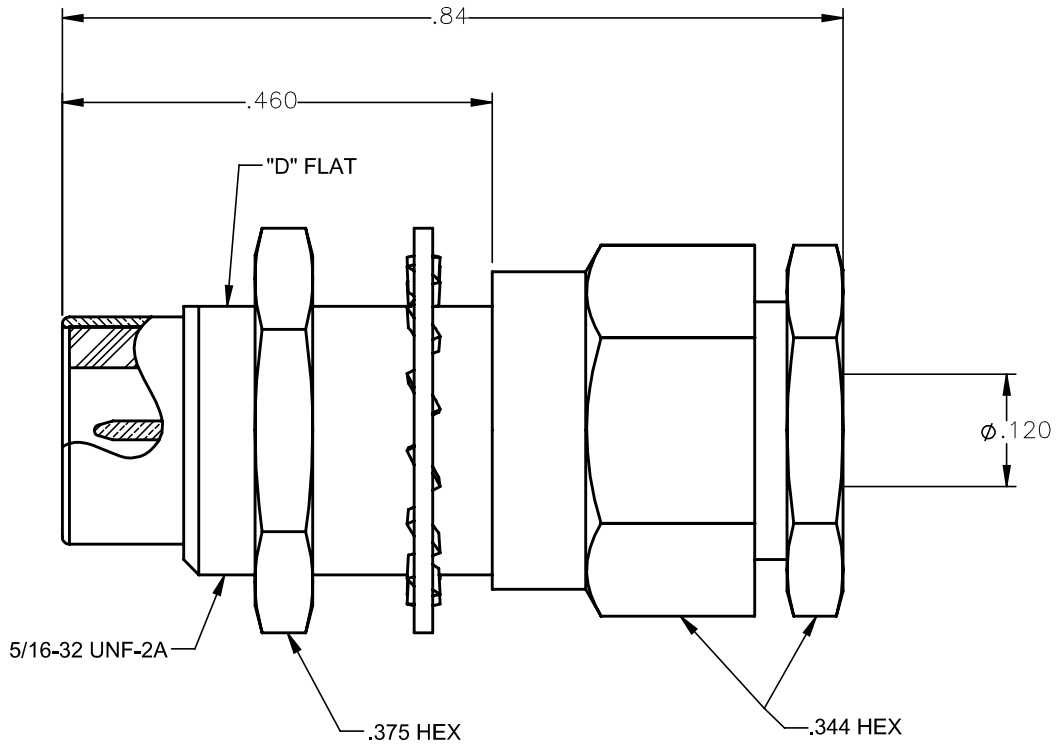


REVISIONS			
REV.	DESCRIPTION	DATE	APPROVED
A	INITIAL RELEASE	11/12/14	N.D.





NOTES:

MATERIALS:

1. INSULATORS = VIRGIN WHITE TEFLON PER ASTM D1710, GRADE 1, TYPE I, CLASS "B".
2. LOCKWASHER = PHOSPHOR BRONZE PER ASTM B139, COPPER ALLOY C53400, TEMPER H04.
3. ALL OTHER METAL PARTS = BRASS PER ASTM B16, ALLOY C36000, TEMPER H02.

FINISHES:

1. CONTACT = GOLD PLATE PER ASTM B488-01, TYPE II, 50 $\mu$ in MIN, GRADE C, OVER 100 TO 200 $\mu$ in STRESS FREE SULFAMATE NICKEL PER QQ-N-290.
2. ALL OTHER METAL PARTS = GOLD PLATE PER ASTM B488-01, TYPE II, 30 $\mu$ in MIN, GRADE C OVER 100 TO 200 $\mu$ in COPPER STRIKE PER MIL-C-14550.

UNLESS OTHERWISE SPECIFIED DIMENSIONS ARE IN INCHES TOLERANCES ON		DWN:	DATE	 Property of Radiall This document cannot be reproduced or communicated to a third party without prior written permission of RADIALL.			
		N.D.	11/12/14				
DECIMAL	ANGLE	CHKD:	DATE	75 ohm SCREW-ON STRAIGHT MALE JACK BULKHEAD MOUNT CLAMP TYPE FOR RG-316 & SIMILAR CABLES			
		D.N.	11/12/14				
REFERENCE:		APVD:	DATE	SIZE	FSCM NO.	DWG NO.	REV
		J.M.	11/12/14	A	19505	1703-1551-003	A
ORIGINATED: N.D. DATE: 11/12/14		MATERIALS AND FINISHES: SEE NOTES		SCALE 5:1	THIRD ANGLE PROJECTION		SHEET 1 OF 1

1703-1551-003