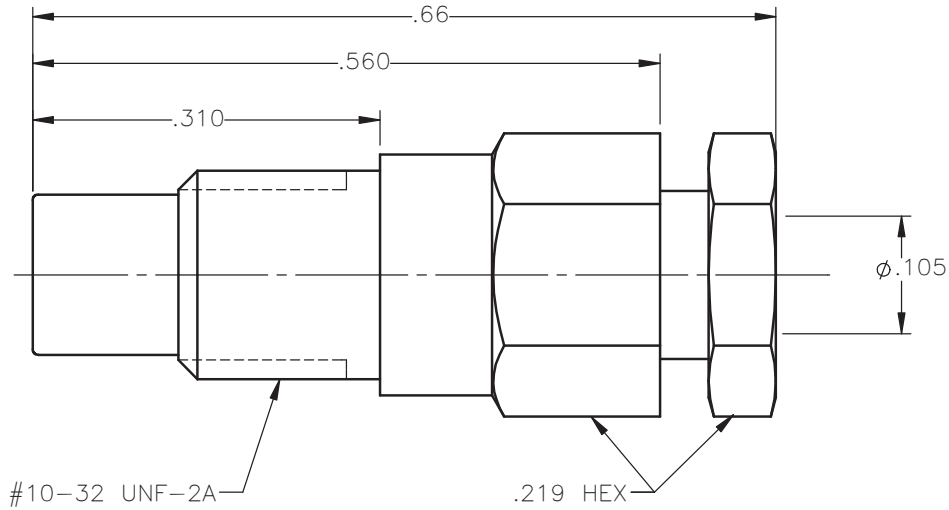


REVISIONS			
REV.	DESCRIPTION	DATE	APPROVED
A	REDRAWN	12/05/13	J.S.





NOTES:

MATERIALS:

1. ALL METAL PARTS = BRASS PER ASTM B16, ALLOY C36000, TEMPER H02.
2. INSULATORS = VIRGIN WHITE TEFLON PER ASTM D1710, GRADE 1, TYPE I, CLASS "B".

FINISHES:

1. CONTACT = GOLD PLATE PER MIL-G-45204, TYPE II, CLASS 1, GRADE C, OVER .00010 TO .00020 STRESS FREE SULFAMATE NICKEL PER QQ-N-290.
2. ALL OTHER METAL PARTS = NICKEL PLATE PER QQ-N-290, CLASS 1, GRADE G, EXCEPT .0001 TO .0002 THICK OVER .00005 TO .0001 THICK COPPER PER MIL-C-14550.

UNLESS OTHERWISE SPECIFIED DIMENSIONS ARE IN INCHES TOLERANCES ON		DWN: E.W.	DATE: 08/02/94	 Property of Radiall This document cannot be reproduced or communicated to a third party without prior written permission of RADIALL.	
DECIMAL	ANGLE	CHKD: D.N.	DATE: 08/02/94		
		APVD: V.S.	DATE: 08/02/94		
REFERENCE: ROCKWELL ORIGINATED: E.W. DATE: 08/02/94		MATERIALS & FINISHES: SEE NOTES		SMC STRAIGHT MALE JACK CLAMP TYPE FOR RG-178DS & SIMILAR CABLES	
		SIZE: A	FSCM NO.: 19505	DWG NO.: 1001-7551-005	REV: A
		SCALE: 6:1		THIRD ANGLE PROJECTION	SHEET 1 OF 1

1001-7551-005