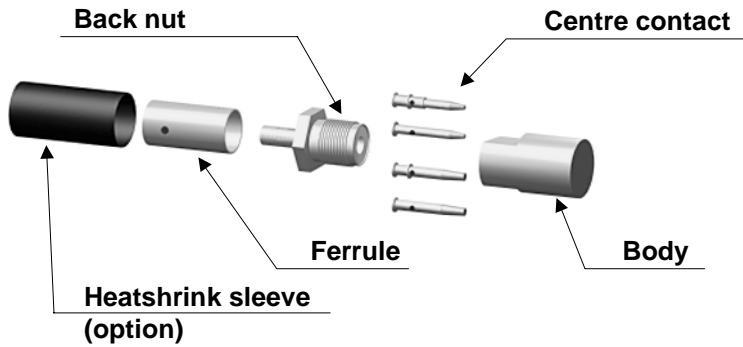
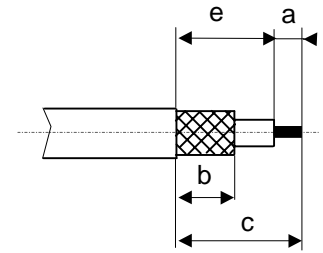


# Crimp 10 : Crimped/soldered ferrule

## COMPONENTS

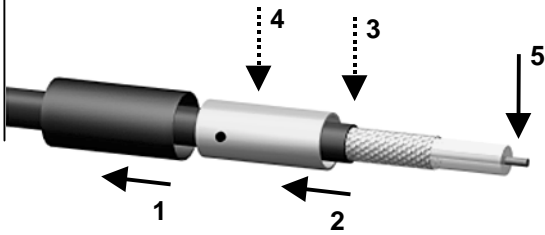


## STRIPPING DIMENSIONS



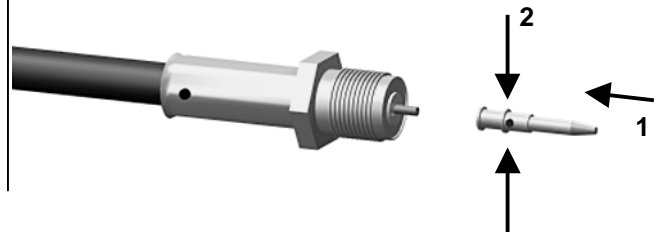
1

Slide the heatshrink sleeve onto the cable (Option).  
 Slide the ferrule onto the cable.  
 Position the ferrule's hole at the front if soldering.  
 Position the ferrule's hole at the back if crimping.  
 Strip the cable.



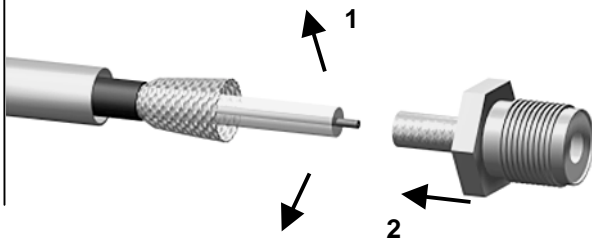
4

Slide the centre contact on until it bottoms against the insulator back nut.  
 Solder or crimp the contact ( see connector TDS ).



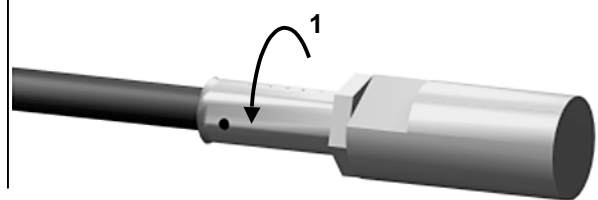
2

Fan the braid.  
 Slide the cable into the back nut.



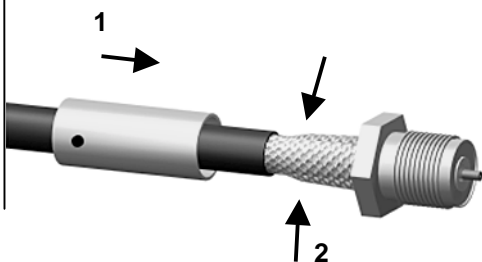
5

Screw the back nut into the connector body with the adapted wrench.  
 Recommended coupling torque ( see connector TDS ).



3

Slide the ferrule over the braid.  
 Crimp the ferrule with crimping tool ( see connector TDS ).



6

Slide the sleeve over the ferrule and heatshrink it in place (Option).

