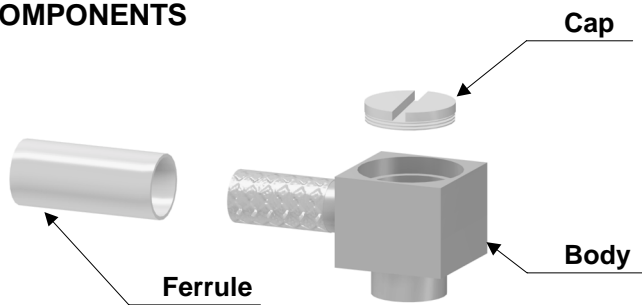
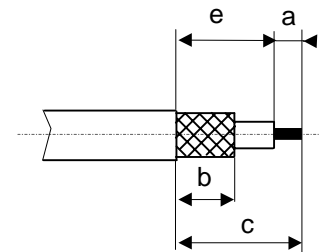


Crimp 07 : R/A screw cap

COMPONENTS

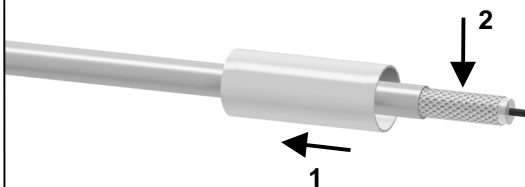


STRIPPING DIMENSIONS



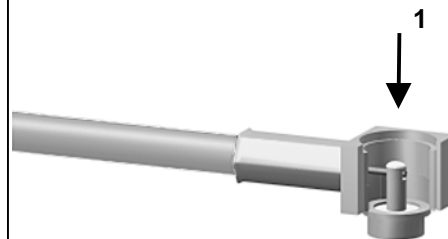
1

Slide the ferrule onto the cable.
Strip the cable.



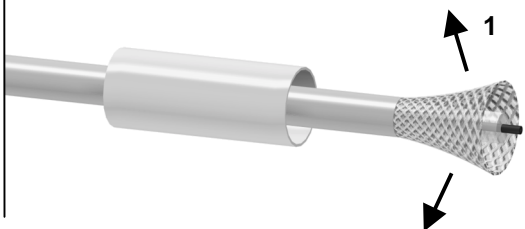
4

Solder the inner conductor.



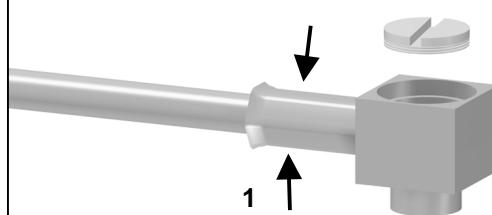
2

Fan the braid.



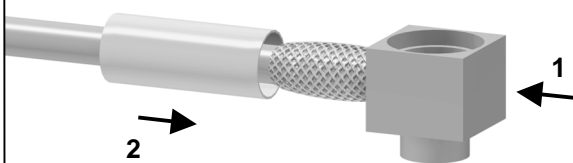
5

Crimp the ferrule with crimping tool (see connector TDS).



3

Push the connector body under the braid.
Slide the ferrule over the braid.



6

Screw the nut into the body.

